

Product datasheet for **CF806794**

JAK2 Mouse Monoclonal Antibody [Clone ID: OTI7D12]

Product data:

Product Type:	Primary Antibodies
Clone Name:	OTI7D12
Applications:	IHC
Recommended Dilution:	IHC 1:150
Reactivity:	Human, Mouse, Rat
Host:	Mouse
Isotype:	IgG2b
Clonality:	Monoclonal
Immunogen:	Human recombinant protein fragment corresponding to amino acids 297-596 of human JAK2(NP_004963) produced in E.coli.
Formulation:	Lyophilized powder (original buffer 1X PBS, pH 7.3, 8% trehalose)
Reconstitution Method:	For reconstitution, we recommend adding 100uL distilled water to a final antibody concentration of about 1 mg/mL. To use this carrier-free antibody for conjugation experiment, we strongly recommend performing another round of desalting process. (OriGene recommends Zeba Spin Desalting Columns, 7KMWCO from Thermo Scientific)
Purification:	Purified from mouse ascites fluids or tissue culture supernatant by affinity chromatography (protein A/G)
Conjugation:	Unconjugated
Storage:	Store at -20°C as received.
Stability:	Stable for 12 months from date of receipt.
Gene Name:	Janus kinase 2
Database Link:	NP_004963 Entrez Gene 16452 Mouse Entrez Gene 24514 Rat Entrez Gene 3717 Human O60674



[View online »](#)

Background:

This gene product is a protein tyrosine kinase involved in a specific subset of cytokine receptor signaling pathways. It has been found to be constitutively associated with the prolactin receptor and is required for responses to gamma interferon. Mice that do not express an active protein for this gene exhibit embryonic lethality associated with the absence of definitive erythropoiesis. [provided by RefSeq, Jul 2008]

Synonyms:

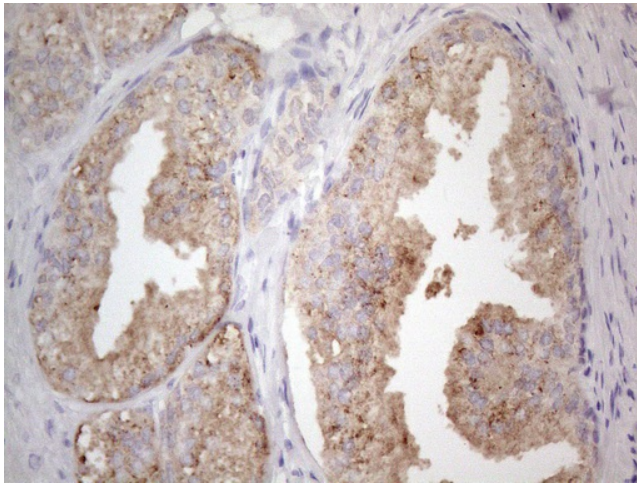
JTK10; THCYT3

Protein Families:

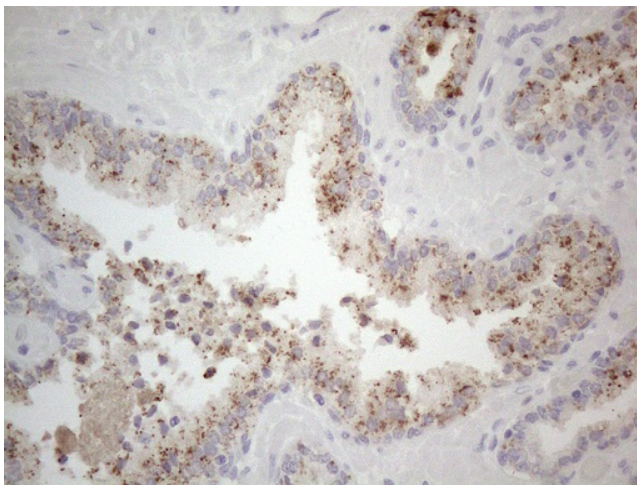
Druggable Genome, Protein Kinase

Protein Pathways:

Adipocytokine signaling pathway, Chemokine signaling pathway, Jak-STAT signaling pathway

Product images:

Immunohistochemical staining of paraffin-embedded Human prostate tissue within the normal limits using anti-JAK2 mouse monoclonal antibody. Heat-induced epitope retrieval by EDTA solution buffer pH 8.0 at 120°C for 3 min.



Immunohistochemical staining of paraffin-embedded Carcinoma of Human prostate tissue using anti-JAK2 mouse monoclonal antibody. Heat-induced epitope retrieval by EDTA solution buffer pH 8.0 at 120°C for 3 min.