

Product datasheet for **CF806791**

Dishevelled 2 (DVL2) Mouse Monoclonal Antibody [Clone ID: OTI2D11]

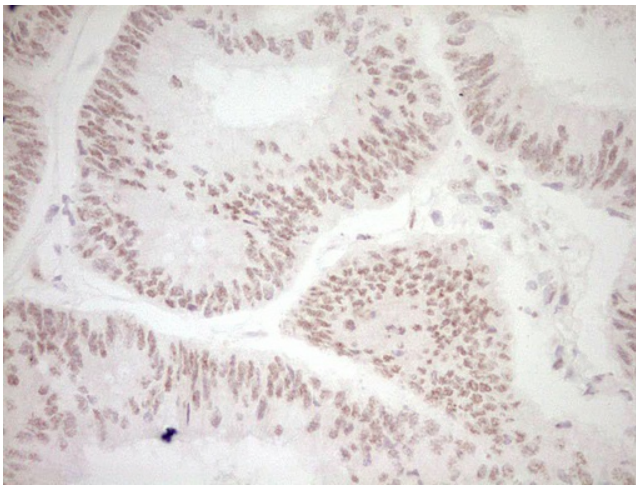
Product data:

Product Type:	Primary Antibodies
Clone Name:	OTI2D11
Applications:	IHC
Recommended Dilution:	IHC 1:150
Reactivity:	Human, Mouse, Rat
Host:	Mouse
Isotype:	IgG2b
Clonality:	Monoclonal
Immunogen:	Human recombinant protein fragment corresponding to amino acids 1-320 of human DVL2(NP_004413) produced in E.coli.
Formulation:	Lyophilized powder (original buffer 1X PBS, pH 7.3, 8% trehalose)
Reconstitution Method:	For reconstitution, we recommend adding 100uL distilled water to a final antibody concentration of about 1 mg/mL. To use this carrier-free antibody for conjugation experiment, we strongly recommend performing another round of desalting process. (OriGene recommends Zeba Spin Desalting Columns, 7KMWCO from Thermo Scientific)
Purification:	Purified from mouse ascites fluids or tissue culture supernatant by affinity chromatography (protein A/G)
Conjugation:	Unconjugated
Storage:	Store at -20°C as received.
Stability:	Stable for 12 months from date of receipt.
Predicted Protein Size:	78.8 kDa
Gene Name:	dishevelled segment polarity protein 2
Database Link:	NP_004413 Entrez Gene 13543 Mouse Entrez Gene 1856 Human Q14641

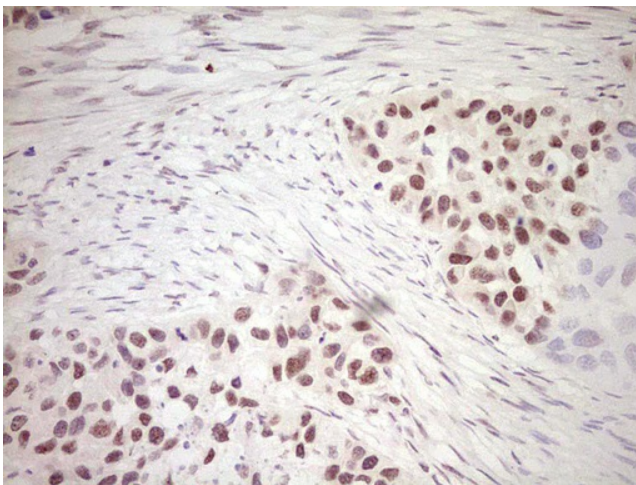


[View online »](#)

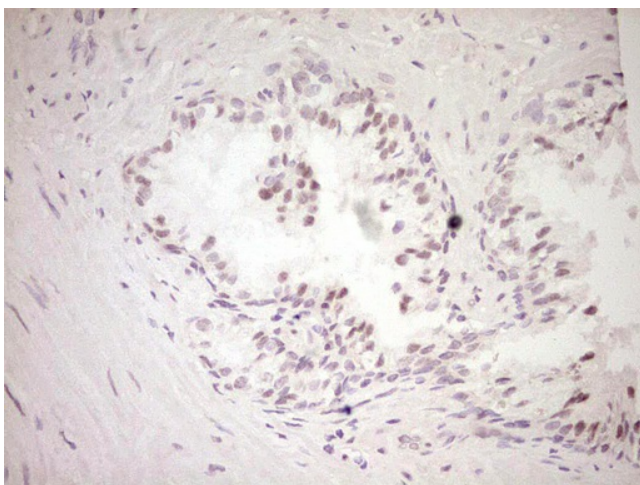
- Background:** This gene encodes a member of the dishevelled (dsh) protein family. The vertebrate dsh proteins have approximately 40% amino acid sequence similarity with *Drosophila* dsh. This gene encodes a 90-kD protein that undergoes posttranslational phosphorylation to form a 95-kD cytoplasmic protein, which may play a role in the signal transduction pathway mediated by multiple Wnt proteins. The mechanisms of dishevelled function in Wnt signaling are likely to be conserved among metazoans. [provided by RefSeq, Jul 2008]
- Synonyms:** dishevelled; dishevelled 2; dishevelled 2 (homologous to *Drosophila* dsh); DSH homolog 2; dsh homolog 2 (*Drosophila*); segment polarity protein dishevelled homolog DVL-2
- Protein Families:** Druggable Genome, ES Cell Differentiation/IPS
- Protein Pathways:** Basal cell carcinoma, Colorectal cancer, Melanogenesis, Notch signaling pathway, Pathways in cancer, Wnt signaling pathway

Product images:

Immunohistochemical staining of paraffin-embedded Adenocarcinoma of Human colon tissue using anti-DVL2 mouse monoclonal antibody. (Heat-induced epitope retrieval by 1mM EDTA in 10mM Tris, pH8.5, 120°C for 3min, [TA806791])



Immunohistochemical staining of paraffin-embedded Carcinoma of Human kidney tissue using anti-DVL2 mouse monoclonal antibody. (Heat-induced epitope retrieval by 1mM EDTA in 10mM Tris, pH8.5, 120°C for 3min, [TA806791])



Immunohistochemical staining of paraffin-embedded Human prostate tissue within the normal limits using anti-DVL2 mouse monoclonal antibody. (Heat-induced epitope retrieval by 1mM EDTA in 10mM Tris, pH8.5, 120°C for 3min, [TA806791])