

Product datasheet for **CF806750**

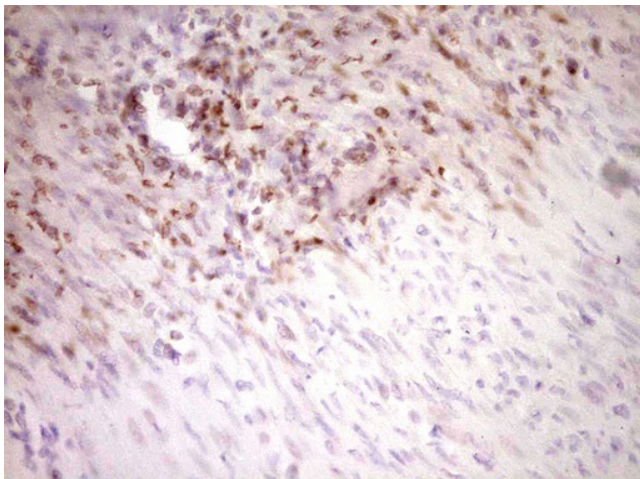
Stabilin 2 (STAB2) Mouse Monoclonal Antibody [Clone ID: OTI2A6]

Product data:

Product Type:	Primary Antibodies
Clone Name:	OTI2A6
Applications:	IHC
Recommended Dilution:	IHC 1:150
Reactivity:	Human
Host:	Mouse
Isotype:	IgG1
Clonality:	Monoclonal
Immunogen:	Human recombinant protein fragment corresponding to amino acids 1914-2194 of human STAB2(NP_060034) produced in E.coli.
Formulation:	Lyophilized powder (original buffer 1X PBS, pH 7.3, 8% trehalose)
Reconstitution Method:	For reconstitution, we recommend adding 100uL distilled water to a final antibody concentration of about 1 mg/mL. To use this carrier-free antibody for conjugation experiment, we strongly recommend performing another round of desalting process. (OriGene recommends Zeba Spin Desalting Columns, 7KMWCO from Thermo Scientific)
Purification:	Purified from mouse ascites fluids or tissue culture supernatant by affinity chromatography (protein A/G)
Conjugation:	Unconjugated
Storage:	Store at -20°C as received.
Stability:	Stable for 12 months from date of receipt.
Predicted Protein Size:	274.7 kDa
Gene Name:	stabilin 2
Database Link:	NP_060034 Entrez Gene 55576 Human Q8WWQ8
Synonyms:	FEEL2; FELE-2; FELL2; FEX2; HARE; SCARH1
Protein Families:	Druggable Genome, Transmembrane



[View online »](#)

Product images:

Immunohistochemical staining of paraffin-embedded Human endometrium tissue within the normal limits using anti-STAB2 mouse monoclonal antibody. Heat-induced epitope retrieval by EDTA solution buffer pH 8.0 at 120°C for 3 min.