

## Product datasheet for **CF806667**

### UBE3B Mouse Monoclonal Antibody [Clone ID: OTI4E4]

#### Product data:

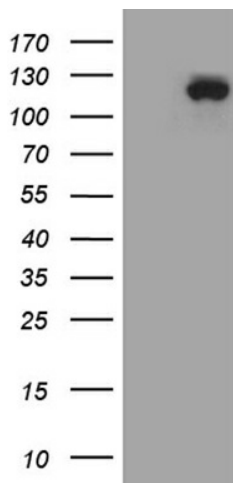
Product Type:	Primary Antibodies
Clone Name:	OTI4E4
Applications:	WB
Recommended Dilution:	WB 1:2000
Reactivity:	Human, Mouse, Rat
Host:	Mouse
Isotype:	IgG1
Clonality:	Monoclonal
Immunogen:	Human recombinant protein fragment corresponding to amino acids 768-1068 of human UBE3B (NP_569733) produced in E.coli.
Formulation:	Lyophilized powder (original buffer 1X PBS, pH 7.3, 8% trehalose)
Reconstitution Method:	For reconstitution, we recommend adding 100uL distilled water to a final antibody concentration of about 1 mg/mL. To use this carrier-free antibody for conjugation experiment, we strongly recommend performing another round of desalting process. (OriGene recommends Zeba Spin Desalting Columns, 7KMWCO from Thermo Scientific)
Purification:	Purified from mouse ascites fluids or tissue culture supernatant by affinity chromatography (protein A/G)
Conjugation:	Unconjugated
Storage:	Store at -20°C as received.
Stability:	Stable for 12 months from date of receipt.
Predicted Protein Size:	122.9 kDa
Gene Name:	ubiquitin protein ligase E3B
Database Link:	<a href="#">NP_569733</a> <a href="#">Entrez Gene 89910 Human Q7Z3V4</a>
Synonyms:	BPIDS
Protein Families:	Druggable Genome



[View online »](#)

Protein Pathways: Ubiquitin mediated proteolysis

### Product images:



HEK293T cells were transfected with the pCMV6-ENTRY control (Cat# [PS100001], Left lane) or pCMV6-ENTRY UBE3B (Cat# [RC219024], Right lane) cDNA for 48 hrs and lysed. Equivalent amounts of cell lysates (5 ug per lane) were separated by SDS-PAGE and immunoblotted with anti-UBE3B (Cat# [TA806667])(1:2000). Positive lysates [LY408916] (100ug) and [LC408916] (20ug) can be purchased separately from OriGene.