

## Product datasheet for **CF806589**

### **BCL2 Mouse Monoclonal Antibody [Clone ID: OTI10C7]**

#### **Product data:**

|                               |  |
|-------------------------------|--|
| <b>Product Type:</b>          | Primary Antibodies   |
| <b>Clone Name:</b>            | OTI10C7  |
| <b>Applications:</b>          | IHC, WB  |
| <b>Recommended Dilution:</b>  | IHC 1:150  |
| <b>Reactivity:</b>            | Human, Mouse, Rat  |
| <b>Host:</b>                  | Mouse  |
| <b>Isotype:</b>               | IgG1   |
| <b>Clonality:</b>             | Monoclonal   |
| <b>Immunogen:</b>             | Full length human recombinant protein of human BCL2 (NP_000624) produced in HEK293T cell.  |
| <b>Formulation:</b>           | Lyophilized powder (original buffer 1X PBS, pH 7.3, 8% trehalose)  |
| <b>Reconstitution Method:</b> | For reconstitution, we recommend adding 100uL distilled water to a final antibody concentration of about 1 mg/mL. To use this carrier-free antibody for conjugation experiment, we strongly recommend performing another round of desalting process. (OriGene recommends Zeba Spin Desalting Columns, 7KMWCO from Thermo Scientific) |
| <b>Purification:</b>          | Purified from mouse ascites fluids or tissue culture supernatant by affinity chromatography (protein A/G)  |
| <b>Conjugation:</b>           | Unconjugated   |
| <b>Storage:</b>               | Store at -20°C as received.  |
| <b>Stability:</b>             | Stable for 12 months from date of receipt.   |
| <b>Gene Name:</b>             | BCL2 apoptosis regulator   |
| <b>Database Link:</b>         | <a href="#">NP_000624</a><br><a href="#">Entrez Gene 12043 Mouse</a> <a href="#">Entrez Gene 24224 Rat</a> <a href="#">Entrez Gene 596 Human</a><br><a href="#">P10415</a>   |
| <b>Synonyms:</b>              | Bcl-2; PPP1R50   |
| <b>Protein Families:</b>      | Druggable Genome, ES Cell Differentiation/IPS, Stem cell - Pluripotency, Transmembrane   |

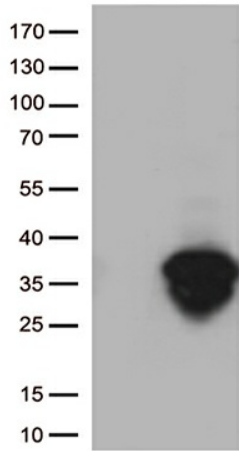


[View online »](#)

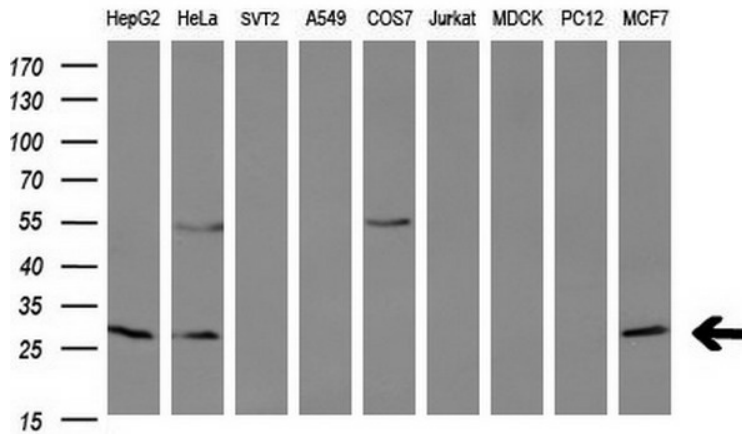
**Protein Pathways:**

Amyotrophic lateral sclerosis (ALS), Apoptosis, Colorectal cancer, Focal adhesion, Neurotrophin signaling pathway, Pathways in cancer, Prostate cancer, Small cell lung cancer

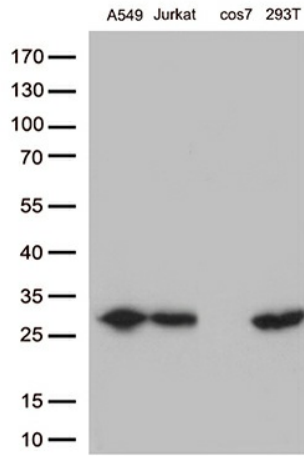
**Product images:**



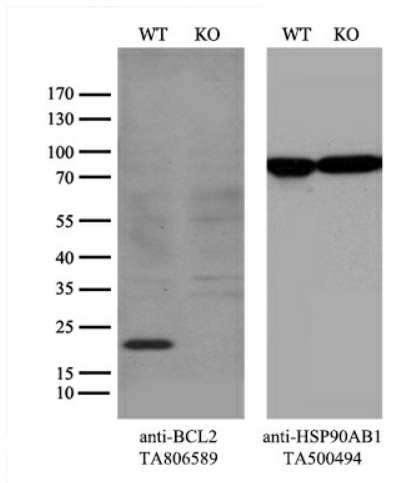
HEK293T cells were transfected with the pCMV6-ENTRY control (Left lane) or pCMV6-ENTRY BCL2 [RC204498], Right lane) cDNA for 48 hrs and lysed. Equivalent amounts of cell lysates (5 ug per lane) were separated by SDS-PAGE and immunoblotted with anti-BCL2 (1:500).



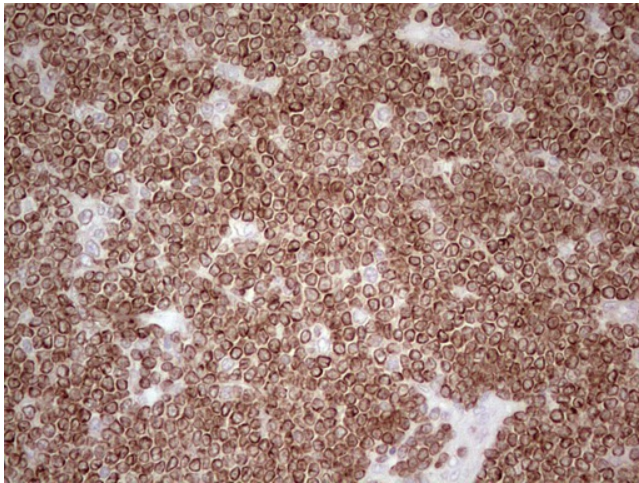
Western blot analysis of extracts (35ug) from 9 different cell lines by using anti-BCL2 monoclonal antibody at 1:200 (HepG2: human; HeLa: human; SVT2: mouse; A549: human; COS7: monkey; Jurkat: human; MDCK: canine; PC12: rat; MCF7: human).



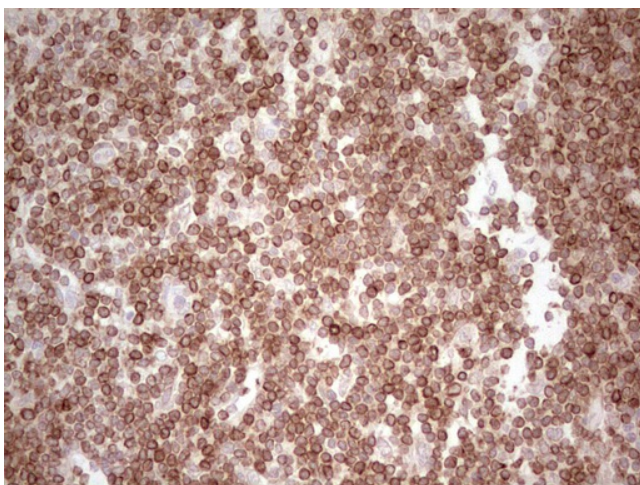
Western blot analysis of extracts (35ug) from 4 cell lines lysates by using anti-BCL2 monoclonal antibody (1:500).



Equivalent amounts of cell lysates (10 ug per lane) of wild-type HeLa cells (WT, Cat# LC810HELA) and BCL2-Knockout HeLa cells (KO, Cat# [LC811172]) were separated by SDS-PAGE and immunoblotted with anti-BCL2 monoclonal antibody [TA806589], (1:500). Then the blotted membrane was stripped and reprobed with anti-HSP90AB1 antibody ([TA500494]) as a loading control.



Immunohistochemical staining of paraffin-embedded Human lymphoma tissue using anti-BCL2 mouse monoclonal antibody. (Heat-induced epitope retrieval by 1mM EDTA in 10mM Tris, pH8.5, 120°C for 3min, [TA806589])



Immunohistochemical staining of paraffin-embedded Human tonsil within the normal limits using anti-BCL2 mouse monoclonal antibody. (Heat-induced epitope retrieval by 1mM EDTA in 10mM Tris, pH8.5, 120°C for 3min, [TA806589])