

Product datasheet for **CF806556**

M-CSF (CSF1) Mouse Monoclonal Antibody [Clone ID: OTI1D10]

Product data:

Product Type:	Primary Antibodies
Clone Name:	OTI1D10
Applications:	IHC, WB
Recommended Dilution:	WB 1:500, IHC 1:150
Reactivity:	Human
Host:	Mouse
Isotype:	IgG1
Clonality:	Monoclonal
Immunogen:	Human recombinant protein fragment corresponding to amino acids 223-496 of human CSF1(NP_000748) produced in E.coli.
Formulation:	Lyophilized powder (original buffer 1X PBS, pH 7.3, 8% trehalose)
Reconstitution Method:	For reconstitution, we recommend adding 100uL distilled water to a final antibody concentration of about 1 mg/mL. To use this carrier-free antibody for conjugation experiment, we strongly recommend performing another round of desalting process. (OriGene recommends Zeba Spin Desalting Columns, 7KMWCO from Thermo Scientific)
Purification:	Purified from mouse ascites fluids or tissue culture supernatant by affinity chromatography (protein A/G)
Conjugation:	Unconjugated
Storage:	Store at -20°C as received.
Stability:	Stable for 12 months from date of receipt.
Predicted Protein Size:	59.9 kDa
Gene Name:	colony stimulating factor 1
Database Link:	NP_000748 Entrez Gene 1435 Human P09603



[View online »](#)

Background:

The protein encoded by this gene is a cytokine that controls the production, differentiation, and function of macrophages. The active form of the protein is found extracellularly as a disulfide-linked homodimer, and is thought to be produced by proteolytic cleavage of membrane-bound precursors. The encoded protein may be involved in development of the placenta. Alternate splicing results in multiple transcript variants. [provided by RefSeq, Sep 2011]

Synonyms:

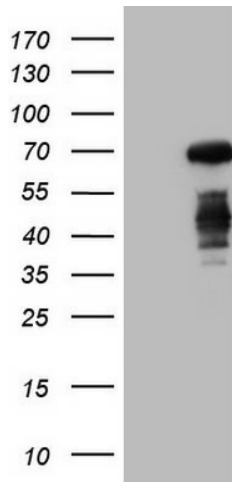
CSF-1; MCSF

Protein Families:

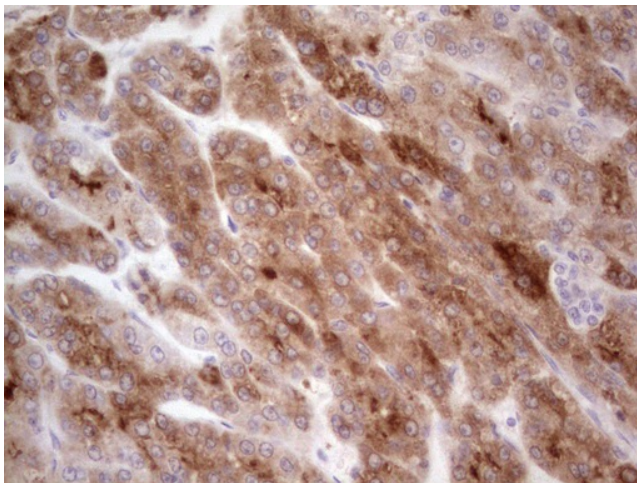
Druggable Genome, ES Cell Differentiation/IPS, Secreted Protein, Transmembrane

Protein Pathways:

Cytokine-cytokine receptor interaction, Hematopoietic cell lineage

Product images:


HEK293T cells were transfected with the pCMV6-ENTRY control (Left lane) or pCMV6-ENTRY CSF1 ([RC217104], Right lane) cDNA for 48 hrs and lysed. Equivalent amounts of cell lysates (5 ug per lane) were separated by SDS-PAGE and immunoblotted with anti-CSF1. Positive lysates [LY424534] (100ug) and [LC424534] (20ug) can be purchased separately from OriGene.



Immunohistochemical staining of paraffin-embedded Carcinoma of Human liver tissue using anti-CSF1 mouse monoclonal antibody. ([TA806556]; heat-induced epitope retrieval by 1mM EDTA in 10mM Tris, pH8.5, 120°C for 3min). Heat-induced epitope retrieval by EDTA solution buffer pH 8.0 at 120°C for 3 min.