

Product datasheet for **CF806553**

Desmuslin (SYNM) Mouse Monoclonal Antibody [Clone ID: OTI5G1]

Product data:

Product Type:	Primary Antibodies
Clone Name:	OTI5G1
Applications:	IHC
Recommended Dilution:	IHC 1:150
Reactivity:	Human
Host:	Mouse
Isotype:	IgG1
Clonality:	Monoclonal
Immunogen:	Human recombinant protein fragment corresponding to amino acids 329-580 of human SYNM(NP_663780) produced in E.coli.
Formulation:	Lyophilized powder (original buffer 1X PBS, pH 7.3, 8% trehalose)
Reconstitution Method:	For reconstitution, we recommend adding 100uL distilled water to a final antibody concentration of about 1 mg/mL. To use this carrier-free antibody for conjugation experiment, we strongly recommend performing another round of desalting process. (OriGene recommends Zeba Spin Desalting Columns, 7KMWCO from Thermo Scientific)
Purification:	Purified from mouse ascites fluids or tissue culture supernatant by affinity chromatography (protein A/G)
Conjugation:	Unconjugated
Storage:	Store at -20°C as received.
Stability:	Stable for 12 months from date of receipt.
Predicted Protein Size:	172.7 kDa
Gene Name:	synemin
Database Link:	NP_663780 Entrez Gene 23336 Human Q15061



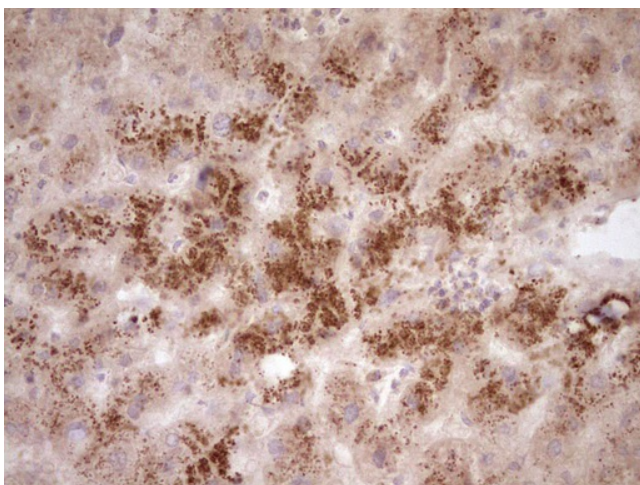
[View online »](#)

Background:

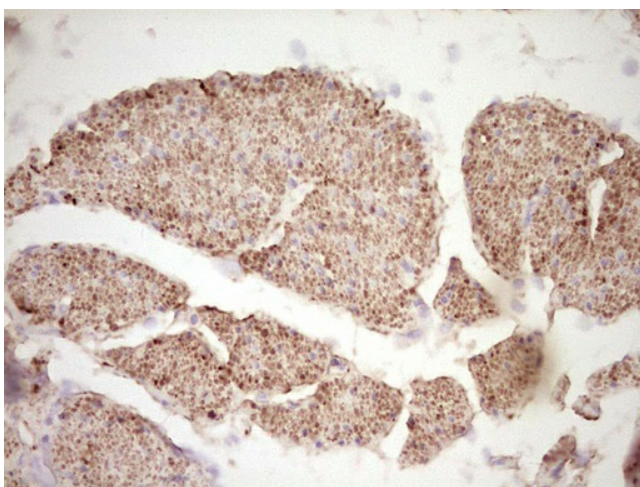
The protein encoded by this gene is an intermediate filament (IF) family member. IF proteins are cytoskeletal proteins that confer resistance to mechanical stress and are encoded by a dispersed multigene family. This protein has been found to form a linkage between desmin, which is a subunit of the IF network, and the extracellular matrix, and provides an important structural support in muscle. Two alternatively spliced variants encoding different isoforms have been described for this gene. [provided by RefSeq, Jul 2008]

Synonyms:

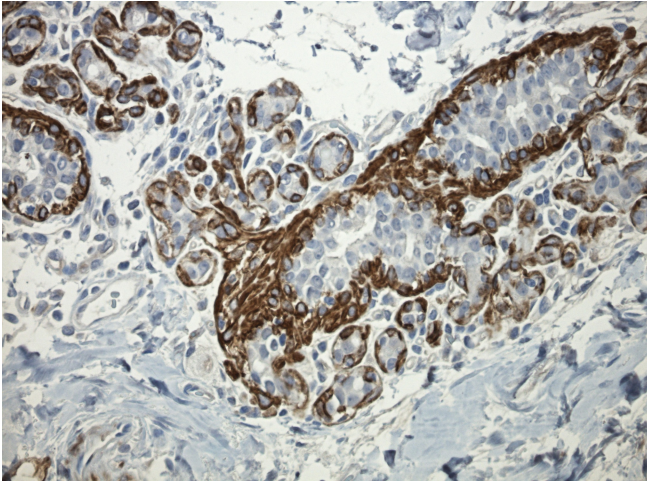
DMN; SYN

Product images:

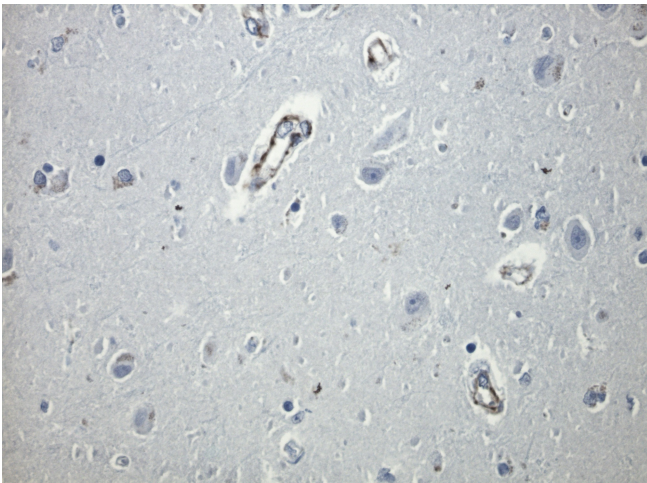
Immunohistochemical staining of paraffin-embedded Human liver tissue within the normal limits using anti-SYNM mouse monoclonal antibody. Heat-induced epitope retrieval by EDTA solution buffer pH 8.0 at 120°C for 3 min.



Immunohistochemical staining of paraffin-embedded Human bladder tissue within the normal limits using anti-SYNM mouse monoclonal antibody. Heat-induced epitope retrieval by EDTA solution buffer pH 8.0 at 120°C for 3 min.



Immunohistochemical staining of paraffin-embedded normal breast using SYNM antibody [TA806553] clone OTI5G1 mouse monoclonal antibody. Protocol used HIER TEE pH9.0 (cat# [B21-100]) and anti-SYNM at 1:200 dilution. Detection was done with Polink1 Broad Mouse and Rabbit C/N [D11-18] with DAB Kit. Image 40x magnification.



Immunohistochemical staining of paraffin-embedded brain using SYNM antibody [TA806553] clone OTI5G1 mouse monoclonal antibody. Protocol used HIER TEE pH9.0 (cat# [B21-100]) and anti-SYNM at 1:200 dilution. Detection was done with Polink1 Broad Mouse and Rabbit C/N [D11-18] with DAB Kit. Image 40x magnification.