

## Product datasheet for **CF806321**

### NR0B2 Mouse Monoclonal Antibody [Clone ID: OTI7B5]

#### Product data:

Product Type:	Primary Antibodies
Clone Name:	OTI7B5
Applications:	IHC, WB
Recommended Dilution:	WB 1:2000
Reactivity:	Human
Host:	Mouse
Isotype:	IgG2a
Clonality:	Monoclonal
Immunogen:	Full length human recombinant protein of human NR0B2 (NP_068804) produced in E.coli.
Formulation:	Lyophilized powder (original buffer 1X PBS, pH 7.3, 8% trehalose)
Reconstitution Method:	For reconstitution, we recommend adding 100uL distilled water to a final antibody concentration of about 1 mg/mL. To use this carrier-free antibody for conjugation experiment, we strongly recommend performing another round of desalting process. (OriGene recommends Zeba Spin Desalting Columns, 7KMWCO from Thermo Scientific)
Purification:	Purified from mouse ascites fluids or tissue culture supernatant by affinity chromatography (protein A/G)
Conjugation:	Unconjugated
Storage:	Store at -20°C as received.
Stability:	Stable for 12 months from date of receipt.
Gene Name:	nuclear receptor subfamily 0 group B member 2
Database Link:	<a href="#">NP_068804</a> <a href="#">Entrez Gene 8431 Human</a> <a href="#">Q15466</a>



[View online »](#)

**Background:**

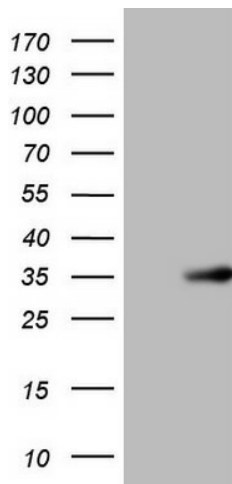
The protein encoded by this gene is an unusual orphan receptor that contains a putative ligand-binding domain but lacks a conventional DNA-binding domain. The gene product is a member of the nuclear hormone receptor family, a group of transcription factors regulated by small hydrophobic hormones, a subset of which do not have known ligands and are referred to as orphan nuclear receptors. The protein has been shown to interact with retinoid and thyroid hormone receptors, inhibiting their ligand-dependent transcriptional activation. In addition, interaction with estrogen receptors has been demonstrated, leading to inhibition of function. Studies suggest that the protein represses nuclear hormone receptor-mediated transactivation via two separate steps: competition with coactivators and the direct effects of its transcriptional repressor function. [provided by RefSeq, Jul 2008]

**Synonyms:**

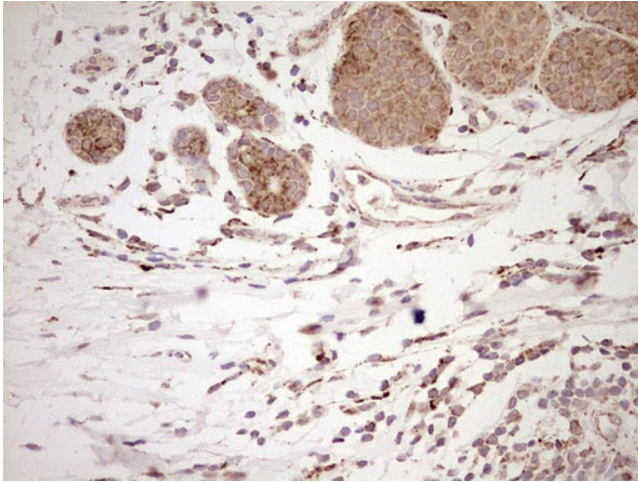
SHP; SHP1

**Protein Families:**

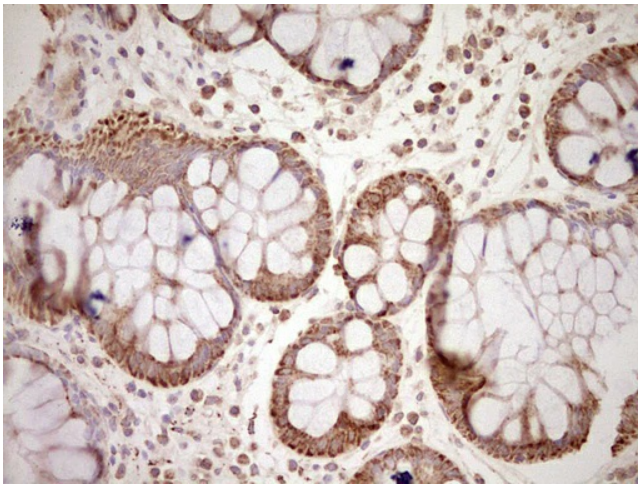
Druggable Genome, Transcription Factors

**Product images:**

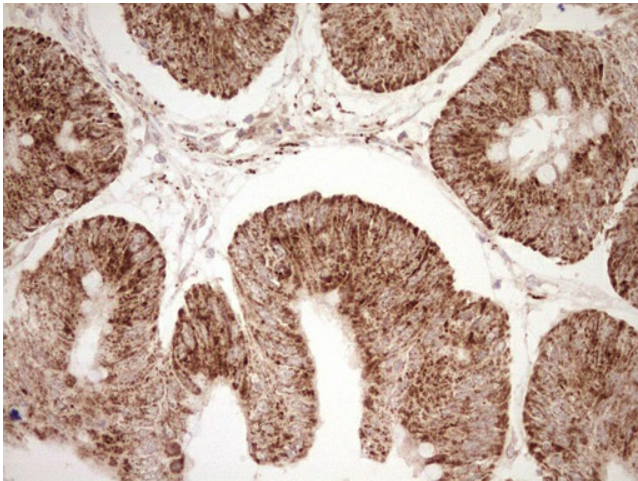
HEK293T cells were transfected with the pCMV6-ENTRY control (Cat# [PS100001], Left lane) or pCMV6-ENTRY NR0B2 (Cat# [RC206422], Right lane) cDNA for 48 hrs and lysed. Equivalent amounts of cell lysates (5 ug per lane) were separated by SDS-PAGE and immunoblotted with anti-NR0B2 (Cat# [TA806321]). Positive lysates [LY402893] (100ug) and [LC402893] (20ug) can be purchased separately from OriGene.



Immunohistochemical staining of paraffin-embedded Adenocarcinoma of Human breast tissue using anti-NR0B2 mouse monoclonal antibody Dilution: 1:150. Heat-induced epitope retrieval by EDTA solution buffer pH 8.0 at 120°C for 3 min.

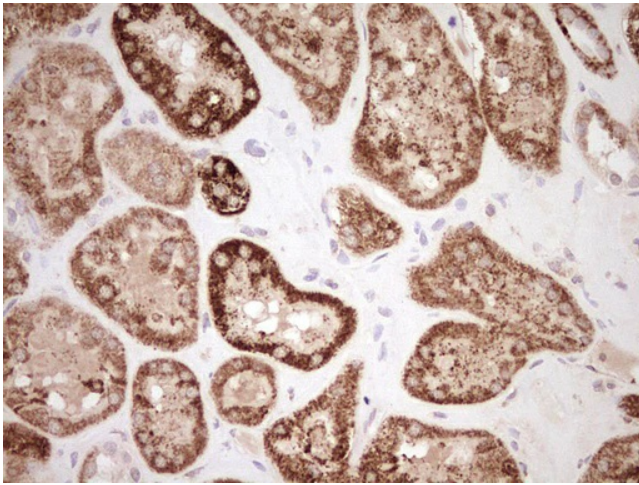


Immunohistochemical staining of paraffin-embedded Human colon tissue within the normal limits using anti-NR0B2 mouse monoclonal antibody Dilution: 1:150. Heat-induced epitope retrieval by EDTA solution buffer pH 8.0 at 120°C for 3 min.

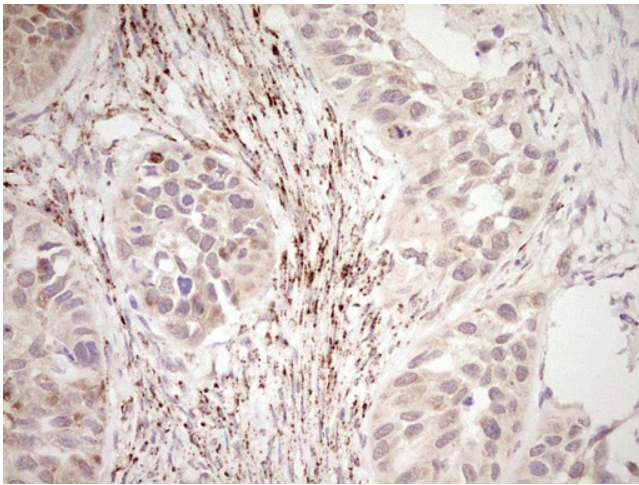


Immunohistochemical staining of paraffin-embedded Adenocarcinoma of Human colon tissue using anti-NR0B2 mouse monoclonal antibody Dilution: 1:150. Heat-induced epitope retrieval by EDTA solution buffer pH 8.0 at 120°C for 3 min.

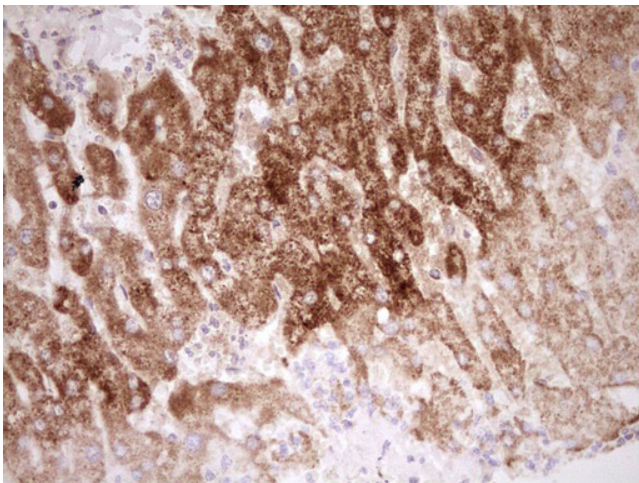




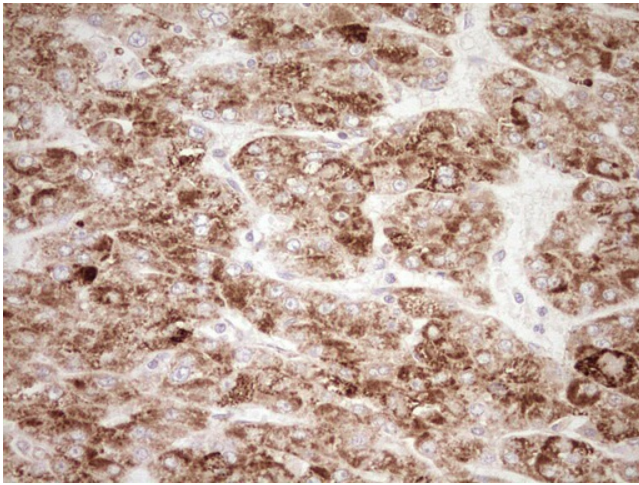
Immunohistochemical staining of paraffin-embedded Human Kidney tissue within the normal limits using anti-NR0B2 mouse monoclonal antibody Dilution: 1:150. Heat-induced epitope retrieval by EDTA solution buffer pH 8.0 at 120°C for 3 min.



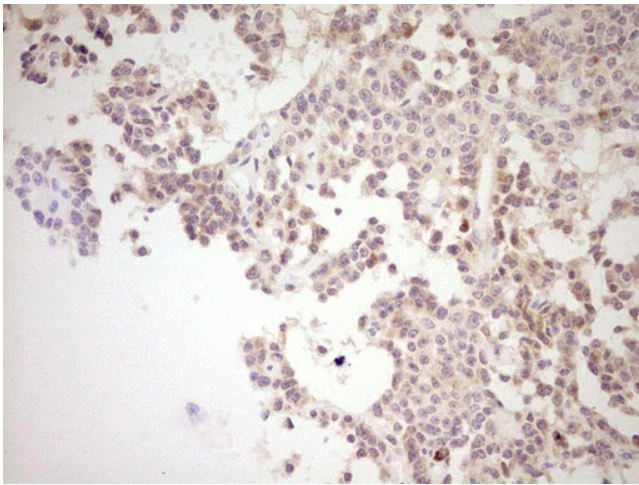
Immunohistochemical staining of paraffin-embedded Carcinoma of Human kidney tissue using anti-NR0B2 mouse monoclonal antibody Dilution: 1:150. Heat-induced epitope retrieval by EDTA solution buffer pH 8.0 at 120°C for 3 min.



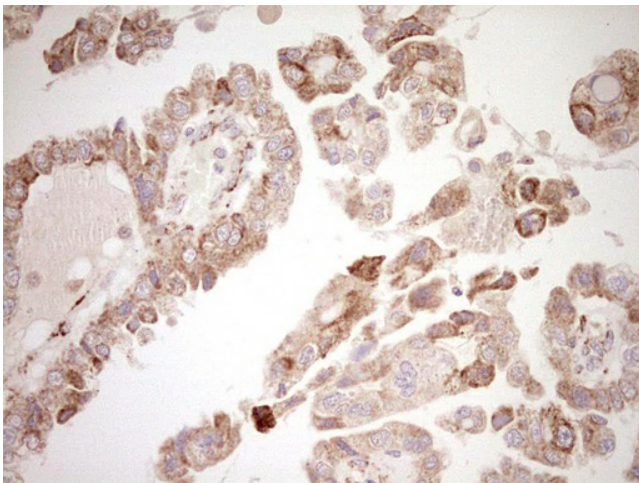
Immunohistochemical staining of paraffin-embedded Human liver tissue within the normal limits using anti-NR0B2 mouse monoclonal antibody Dilution: 1:150. Heat-induced epitope retrieval by EDTA solution buffer pH 8.0 at 120°C for 3 min.



Immunohistochemical staining of paraffin-embedded Carcinoma of Human liver tissue using anti-NR0B2 mouse monoclonal antibody Dilution: 1:150. Heat-induced epitope retrieval by EDTA solution buffer pH 8.0 at 120°C for 3 min.

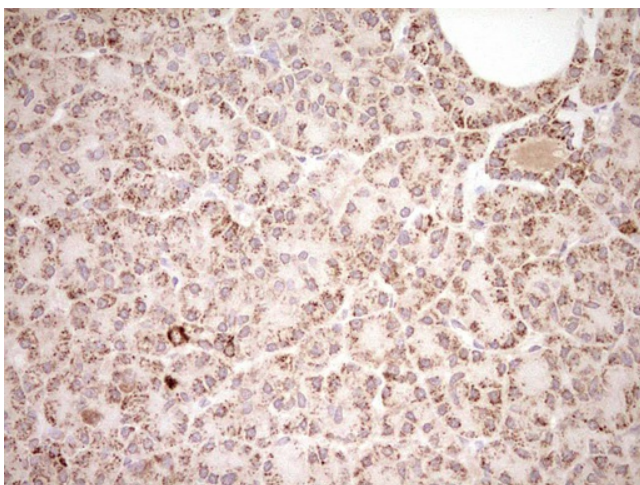


Immunohistochemical staining of paraffin-embedded Carcinoma of Human lung tissue using anti-NR0B2 mouse monoclonal antibody Dilution: 1:150. Heat-induced epitope retrieval by EDTA solution buffer pH 8.0 at 120°C for 3 min.

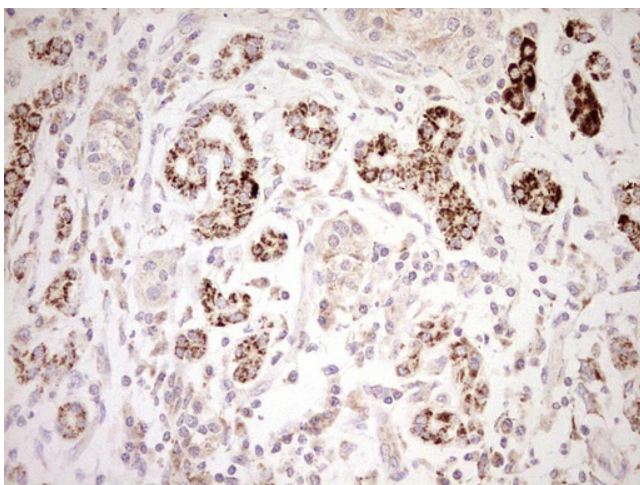


Immunohistochemical staining of paraffin-embedded Adenocarcinoma of Human ovary tissue using anti-NR0B2 mouse monoclonal antibody Dilution: 1:150. Heat-induced epitope retrieval by EDTA solution buffer pH 8.0 at 120°C for 3 min.

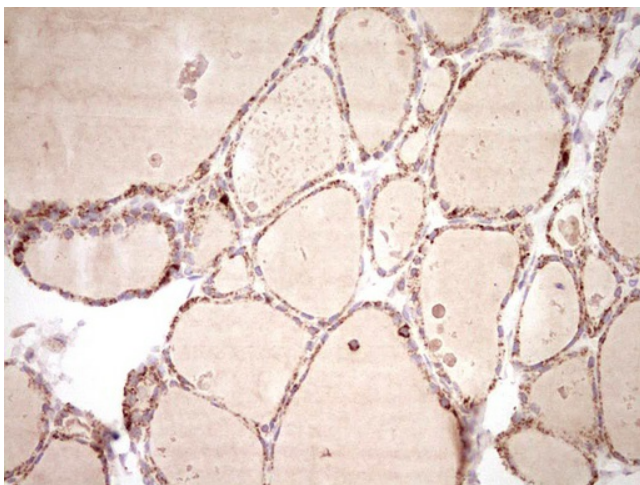




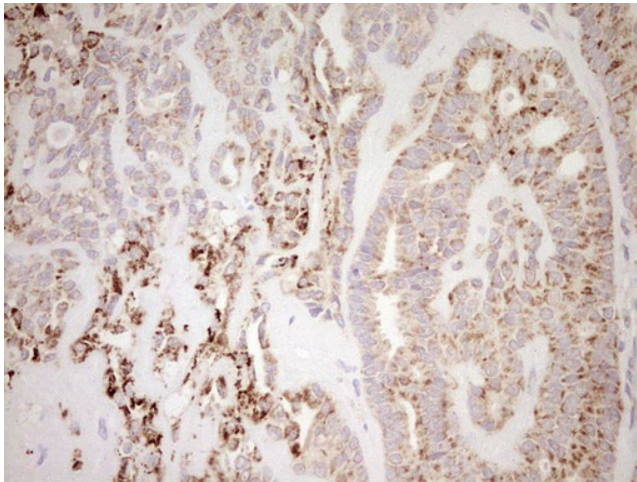
Immunohistochemical staining of paraffin-embedded Human pancreas tissue within the normal limits using anti-NR0B2 mouse monoclonal antibody Dilution: 1:150. Heat-induced epitope retrieval by EDTA solution buffer pH 8.0 at 120°C for 3 min.



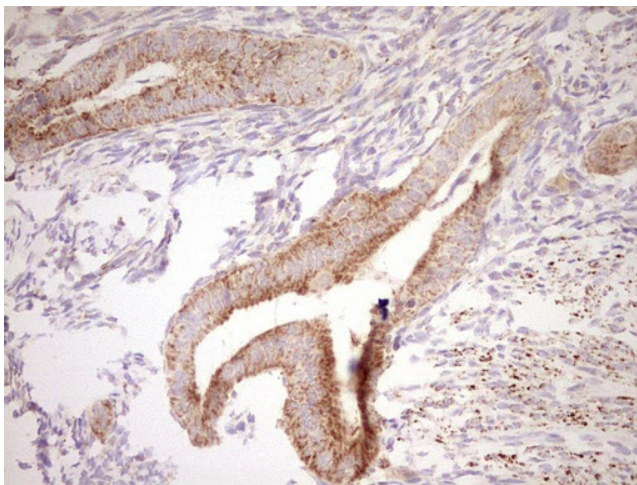
Immunohistochemical staining of paraffin-embedded Carcinoma of Human pancreas tissue using anti-NR0B2 mouse monoclonal antibody Dilution: 1:150. Heat-induced epitope retrieval by EDTA solution buffer pH 8.0 at 120°C for 3 min.



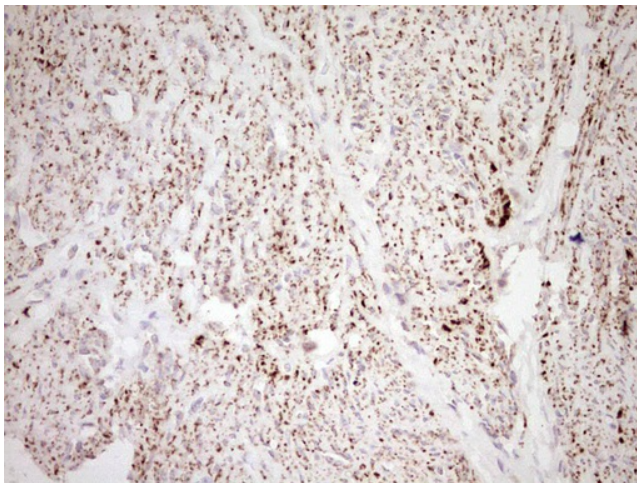
Immunohistochemical staining of paraffin-embedded Human thyroid tissue within the normal limits using anti-NR0B2 mouse monoclonal antibody Dilution: 1:150. Heat-induced epitope retrieval by EDTA solution buffer pH 8.0 at 120°C for 3 min.



Immunohistochemical staining of paraffin-embedded Carcinoma of Human thyroid tissue using anti-NR0B2 mouse monoclonal antibody Dilution: 1:150. Heat-induced epitope retrieval by EDTA solution buffer pH 8.0 at 120°C for 3 min.

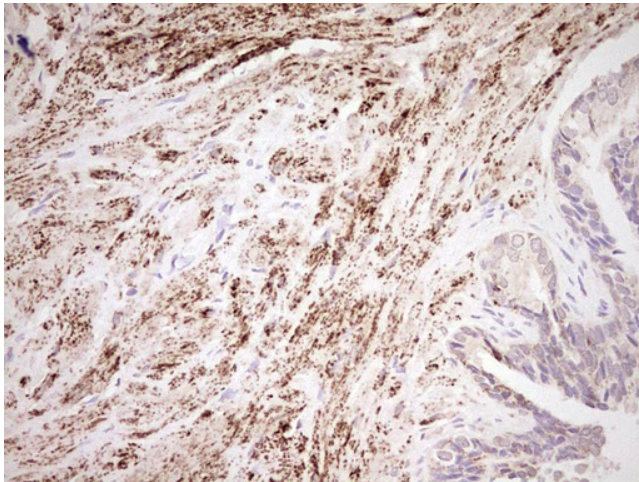


Immunohistochemical staining of paraffin-embedded Human endometrium tissue within the normal limits using anti-NR0B2 mouse monoclonal antibody Dilution: 1:150. Heat-induced epitope retrieval by EDTA solution buffer pH 8.0 at 120°C for 3 min.

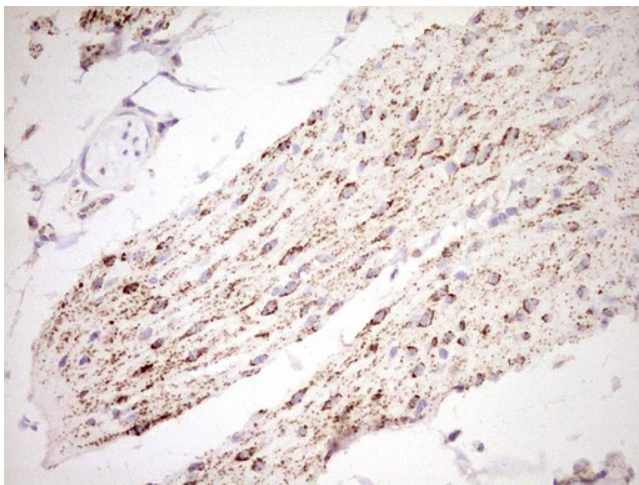


Immunohistochemical staining of paraffin-embedded Adenocarcinoma of Human endometrium tissue using anti-NR0B2 mouse monoclonal antibody Dilution: 1:150. Heat-induced epitope retrieval by EDTA solution buffer pH 8.0 at 120°C for 3 min.

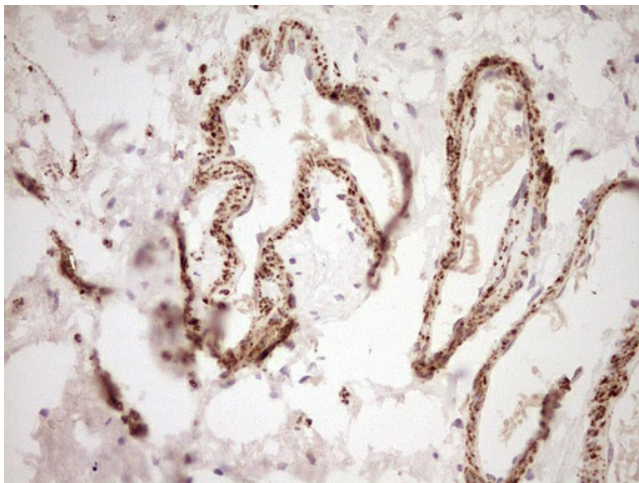




Immunohistochemical staining of paraffin-embedded Human prostate tissue within the normal limits using anti-NR0B2 mouse monoclonal antibody Dilution: 1:150. Heat-induced epitope retrieval by EDTA solution buffer pH 8.0 at 120°C for 3 min.

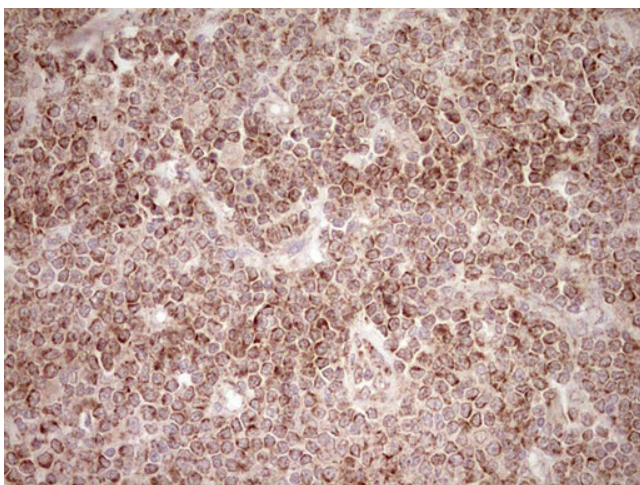


Immunohistochemical staining of paraffin-embedded Human bladder tissue within the normal limits using anti-NR0B2 mouse monoclonal antibody Dilution: 1:150. Heat-induced epitope retrieval by EDTA solution buffer pH 8.0 at 120°C for 3 min.

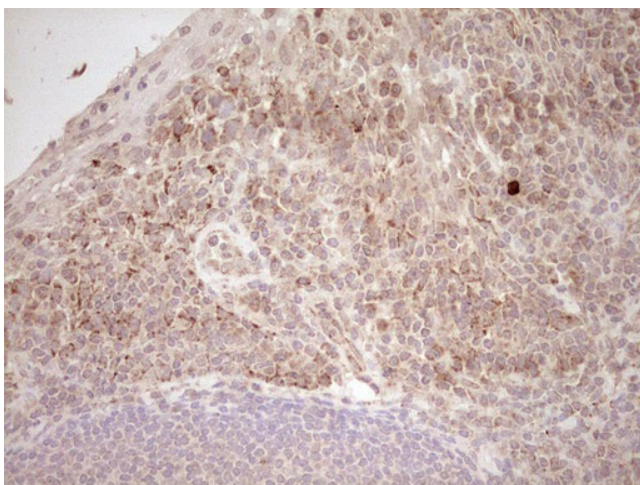


Immunohistochemical staining of paraffin-embedded Carcinoma of Human bladder tissue using anti-NR0B2 mouse monoclonal antibody Dilution: 1:150. Heat-induced epitope retrieval by EDTA solution buffer pH 8.0 at 120°C for 3 min.





Immunohistochemical staining of paraffin-embedded Human lymphoma tissue using anti-NR0B2 mouse monoclonal antibody Dilution: 1:150. Heat-induced epitope retrieval by EDTA solution buffer pH 8.0 at 120°C for 3 min.



Immunohistochemical staining of paraffin-embedded Human tonsil within the normal limits using anti-NR0B2 mouse monoclonal antibody Dilution: 1:150. Heat-induced epitope retrieval by EDTA solution buffer pH 8.0 at 120°C for 3 min.