

## Product datasheet for **CF806088**

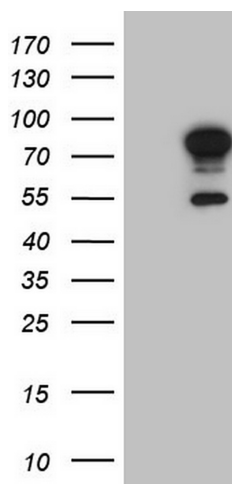
### FSIP1 Mouse Monoclonal Antibody [Clone ID: OTI6F6]

#### Product data:

Product Type:	Primary Antibodies
Clone Name:	OTI6F6
Applications:	WB
Recommended Dilution:	WB 1:2000
Reactivity:	Human
Host:	Mouse
Isotype:	IgG1
Clonality:	Monoclonal
Immunogen:	Full length human recombinant protein of human FSIP1 (NP_689810) produced in HEK293T cell.
Formulation:	Lyophilized powder (original buffer 1X PBS, pH 7.3, 8% trehalose)
Reconstitution Method:	For reconstitution, we recommend adding 100uL distilled water to a final antibody concentration of about 1 mg/mL. To use this carrier-free antibody for conjugation experiment, we strongly recommend performing another round of desalting process. (OriGene recommends Zeba Spin Desalting Columns, 7KMWCO from Thermo Scientific)
Purification:	Purified from mouse ascites fluids or tissue culture supernatant by affinity chromatography (protein A/G)
Conjugation:	Unconjugated
Storage:	Store at -20°C as received.
Stability:	Stable for 12 months from date of receipt.
Predicted Protein Size:	65.9 kDa
Gene Name:	fibrous sheath interacting protein 1
Database Link:	<a href="#">NP_689810</a> <a href="#">Entrez Gene 161835 Human</a> <a href="#">Q8NA03</a>
Synonyms:	HSD10



[View online »](#)

**Product images:**

HEK293T cells were transfected with the pCMV6-ENTRY control (Left lane) or pCMV6-ENTRY FSIP1 ([RC207399], Right lane) cDNA for 48 hrs and lysed. Equivalent amounts of cell lysates (5 ug per lane) were separated by SDS-PAGE and immunoblotted with anti-FSIP1. Positive lysates [LY407403] (100ug) and [LC407403] (20ug) can be purchased separately from OriGene.