

## Product datasheet for **CF805877**

### **hSET1 (SETD1A) Mouse Monoclonal Antibody [Clone ID: OTI7B7]**

#### **Product data:**

<b>Product Type:</b>	Primary Antibodies
<b>Clone Name:</b>	OTI7B7
<b>Applications:</b>	IHC, WB
<b>Recommended Dilution:</b>	WB 1:500, IHC 1:150
<b>Reactivity:</b>	Human, Mouse
<b>Host:</b>	Mouse
<b>Isotype:</b>	IgG1
<b>Clonality:</b>	Monoclonal
<b>Immunogen:</b>	Human recombinant protein fragment corresponding to amino acids 1-320 of human SETD1A(NP_055527) produced in E.coli.
<b>Formulation:</b>	Lyophilized powder (original buffer 1X PBS, pH 7.3, 8% trehalose)
<b>Reconstitution Method:</b>	For reconstitution, we recommend adding 100uL distilled water to a final antibody concentration of about 1 mg/mL. To use this carrier-free antibody for conjugation experiment, we strongly recommend performing another round of desalting process. (OriGene recommends Zeba Spin Desalting Columns, 7KMWCO from Thermo Scientific)
<b>Purification:</b>	Purified from mouse ascites fluids or tissue culture supernatant by affinity chromatography (protein A/G)
<b>Conjugation:</b>	Unconjugated
<b>Storage:</b>	Store at -20°C as received.
<b>Stability:</b>	Stable for 12 months from date of receipt.
<b>Predicted Protein Size:</b>	185.9 kDa
<b>Gene Name:</b>	SET domain containing 1A, histone lysine methyltransferase
<b>Database Link:</b>	<a href="#">NP_055527</a> <a href="#">Entrez Gene 233904 Mouse</a> <a href="#">Entrez Gene 9739 Human</a> <a href="#">O15047</a>



[View online »](#)

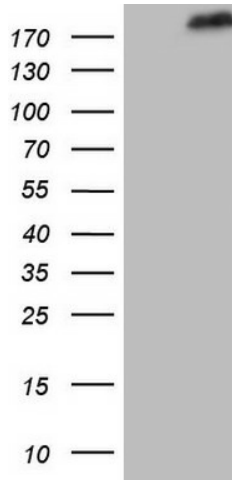
**Background:** SET1A is a component of a histone methyltransferase (HMT) complex that produces mono-, di-, and trimethylated histone H3 at Lys4. The complex is the analog of the *S. cerevisiae* Set1/COMPASS complex (Lee and Skalnik, 2005 [PubMed 16253997]). Also see SET1B (MIM 611055). [supplied by OMIM, Mar 2008]

**Synonyms:** KMT2F; Set1; Set1A

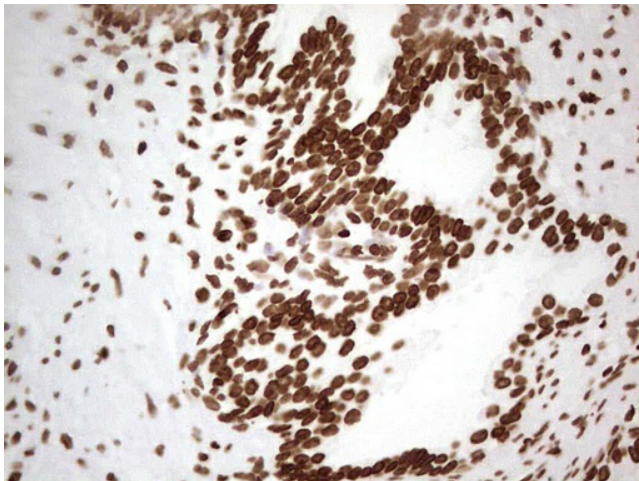
**Protein Families:** Druggable Genome

**Protein Pathways:** Lysine degradation

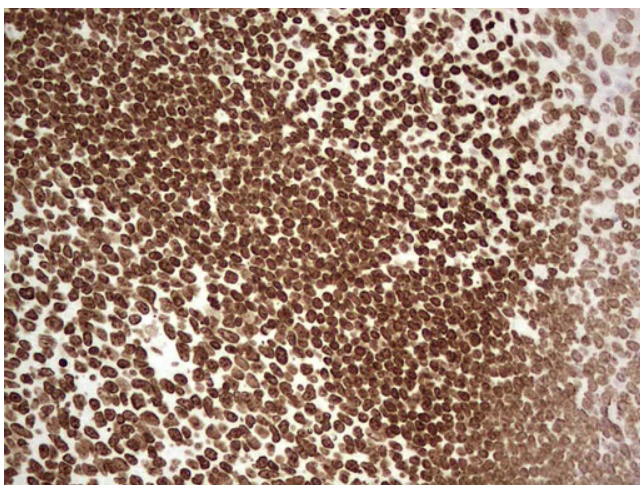
### Product images:



HEK293T cells were transfected with the pCMV6-ENTRY control (Cat# [PS100001], Left lane) or pCMV6-ENTRY SETD1A (Cat# [RC214996], Right lane) cDNA for 48 hrs and lysed. Equivalent amounts of cell lysates (5 ug per lane) were separated by SDS-PAGE and immunoblotted with anti-SETD1A (Cat# [TA805877]). Positive lysates [LY415047] (100ug) and [LC415047] (20ug) can be purchased separately from OriGene.



Immunohistochemical staining of paraffin-embedded Human prostate tissue within the normal limits using anti-SETD1A mouse monoclonal antibody. (Heat-induced epitope retrieval by 1mM EDTA in 10mM Tris, pH8.5, 120°C for 3min, [TA805877])



Immunohistochemical staining of paraffin-embedded Human tonsil within the normal limits using anti-SETD1A mouse monoclonal antibody. (Heat-induced epitope retrieval by 1mM EDTA in 10mM Tris, pH8.5, 120°C for 3min, [TA805877])