

Product datasheet for **CF805798**

Interferon gamma (IFNG) Mouse Monoclonal Antibody [Clone ID: OT11G10]

Product data:

Product Type:	Primary Antibodies
Clone Name:	OT11G10
Applications:	WB
Recommended Dilution:	WB 1:2000
Reactivity:	Human
Host:	Mouse
Isotype:	IgG2b
Clonality:	Monoclonal
Immunogen:	Human recombinant protein fragment corresponding to amino acids 24-166 of human IFNG(NP_000610) produced in E.coli.
Formulation:	Lyophilized powder (original buffer 1X PBS, pH 7.3, 8% trehalose)
Reconstitution Method:	For reconstitution, we recommend adding 100uL distilled water to a final antibody concentration of about 1 mg/mL. To use this carrier-free antibody for conjugation experiment, we strongly recommend performing another round of desalting process. (OriGene recommends Zeba Spin Desalting Columns, 7KMWCO from Thermo Scientific)
Purification:	Purified from mouse ascites fluids or tissue culture supernatant by affinity chromatography (protein A/G)
Conjugation:	Unconjugated
Storage:	Store at -20°C as received.
Stability:	Stable for 12 months from date of receipt.
Predicted Protein Size:	16.7 kDa
Gene Name:	interferon gamma
Database Link:	NP_000610 Entrez Gene 3458 Human P01579



[View online »](#)

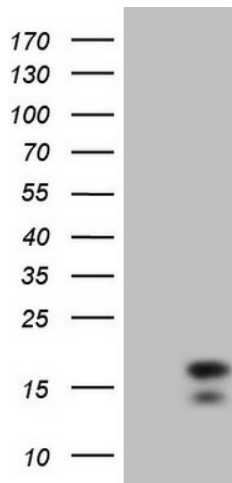
Background: This gene encodes a member of the type II interferon family. The protein encoded is a soluble cytokine with antiviral, immunoregulatory and anti-tumor properties and is a potent activator of macrophages. Mutations in this gene are associated with aplastic anemia. [provided by RefSeq, Nov 2009]

Synonyms: IFG; IFI

Protein Families: Druggable Genome, Secreted Protein

Protein Pathways: Allograft rejection, Cytokine-cytokine receptor interaction, Graft-versus-host disease, Jak-STAT signaling pathway, Natural killer cell mediated cytotoxicity, Proteasome, Regulation of autophagy, Systemic lupus erythematosus, T cell receptor signaling pathway, TGF-beta signaling pathway, Type I diabetes mellitus

Product images:



HEK293T cells were transfected with the pCMV6-ENTRY control (Cat# [PS100001], Left lane) or pCMV6-ENTRY IFNG (Cat# [RC209993], Right lane) cDNA for 48 hrs and lysed. Equivalent amounts of cell lysates (5 ug per lane) were separated by SDS-PAGE and immunoblotted with anti-IFNG (Cat# [TA805798]). Positive lysates [LY400207] (100ug) and [LC400207] (20ug) can be purchased separately from OriGene.