

Product datasheet for **CF805795**

MET Mouse Monoclonal Antibody [Clone ID: OT11E6]

Product data:

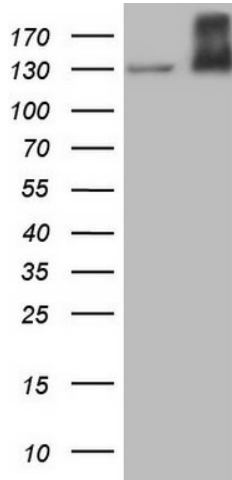
Product Type:	Primary Antibodies
Clone Name:	OT11E6
Applications:	IHC, WB
Recommended Dilution:	WB 1:2000, IHC 1:150
Reactivity:	Human, Mouse, Rat
Host:	Mouse
Isotype:	IgG2b
Clonality:	Monoclonal
Immunogen:	Human recombinant protein fragment corresponding to amino acids 570-885 of human MET(NP_000236) produced in E.coli.
Formulation:	Lyophilized powder (original buffer 1X PBS, pH 7.3, 8% trehalose)
Reconstitution Method:	For reconstitution, we recommend adding 100uL distilled water to a final antibody concentration of about 1 mg/mL. To use this carrier-free antibody for conjugation experiment, we strongly recommend performing another round of desalting process. (OriGene recommends Zeba Spin Desalting Columns, 7KMWCO from Thermo Scientific)
Purification:	Purified from mouse ascites fluids or tissue culture supernatant by affinity chromatography (protein A/G)
Conjugation:	Unconjugated
Storage:	Store at -20°C as received.
Stability:	Stable for 12 months from date of receipt.
Predicted Protein Size:	153 kDa
Gene Name:	MET proto-oncogene, receptor tyrosine kinase
Database Link:	NP_000236 Entrez Gene 17295 Mouse Entrez Gene 24553 Rat Entrez Gene 4233 Human P08581
Synonyms:	AUTS9; c-Met; DFNB97; HGFR; RCCP2
Protein Families:	Druggable Genome, Protein Kinase, Transmembrane



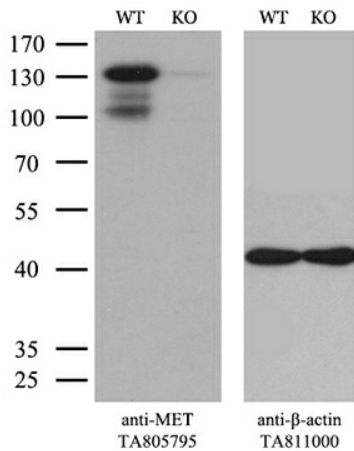
[View online »](#)

Protein Pathways:

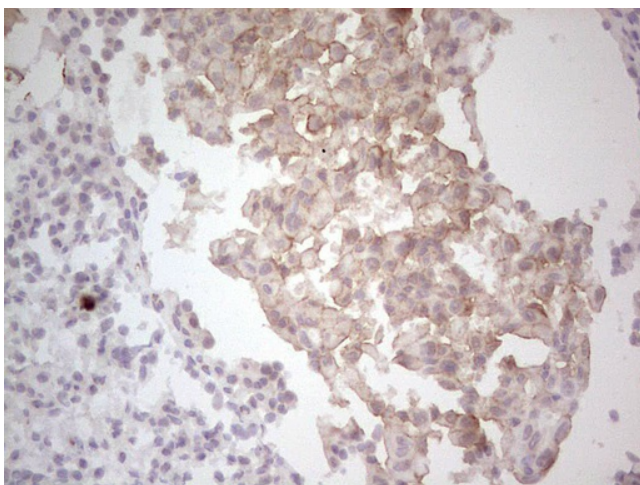
Adherens junction, Axon guidance, Colorectal cancer, Cytokine-cytokine receptor interaction, Endocytosis, Epithelial cell signaling in Helicobacter pylori infection, Focal adhesion, Melanoma, Pathways in cancer, Renal cell carcinoma

Product images:


HEK293T cells were transfected with the pCMV6-ENTRY control (Cat# [PS100001], Left lane) or pCMV6-ENTRY MET (Cat# [RC217003], Right lane) cDNA for 48 hrs and lysed. Equivalent amounts of cell lysates (5 ug per lane) were separated by SDS-PAGE and immunoblotted with anti-MET (Cat# [TA805795]). Positive lysates [LY400094] (100ug) and [LC400094] (20ug) can be purchased separately from OriGene.



Equivalent amounts of cell lysates (10 ug per lane) of wild-type HeLa cells (WT, Cat# LC810HELA) and MET-Knockout HeLa cells (KO, Cat# [LC810144]) were separated by SDS-PAGE and immunoblotted with anti-MET monoclonal antibody [TA805795]. Then the blotted membrane was stripped and reprobed with anti-β-actin antibody ([TA811000]) as a loading control (1:500).



Immunohistochemical staining of paraffin-embedded MET positive Human lung carcinoma tissue using anti-MET mouse monoclonal antibody. ([TA805795]; heat-induced epitope retrieval by 1mM EDTA in 10mM Tris, pH8.5, 120°C for 3min). Heat-induced epitope retrieval by EDTA solution buffer pH 8.0 at 120°C for 3 min.