

## Product datasheet for **CF805653**

### Rb (RB1) Mouse Monoclonal Antibody [Clone ID: OTI11C5]

#### Product data:

Product Type:	Primary Antibodies
Clone Name:	OTI11C5
Applications:	WB
Recommended Dilution:	WB 1:2000
Reactivity:	Human, Mouse, Rat
Host:	Mouse
Isotype:	IgG1
Clonality:	Monoclonal
Immunogen:	Human recombinant protein fragment corresponding to amino acids 309-590 of human RB1(NP_000312) produced in E.coli.
Formulation:	Lyophilized powder (original buffer 1X PBS, pH 7.3, 8% trehalose)
Reconstitution Method:	For reconstitution, we recommend adding 100uL distilled water to a final antibody concentration of about 1 mg/mL. To use this carrier-free antibody for conjugation experiment, we strongly recommend performing another round of desalting process. (OriGene recommends Zeba Spin Desalting Columns, 7KMWCO from Thermo Scientific)
Purification:	Purified from mouse ascites fluids or tissue culture supernatant by affinity chromatography (protein A/G)
Conjugation:	Unconjugated
Storage:	Store at -20°C as received.
Stability:	Stable for 12 months from date of receipt.
Gene Name:	RB transcriptional corepressor 1
Database Link:	<a href="#">NP_000312</a> <a href="#">Entrez Gene 19645 Mouse</a> <a href="#">Entrez Gene 24708 Rat</a> <a href="#">Entrez Gene 5925 Human</a> <a href="#">P06400</a>



[View online »](#)

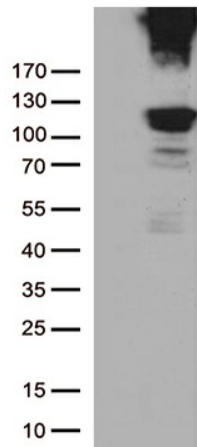
**Background:** The protein encoded by this gene is a negative regulator of the cell cycle and was the first tumor suppressor gene found. The encoded protein also stabilizes constitutive heterochromatin to maintain the overall chromatin structure. The active, hypophosphorylated form of the protein binds transcription factor E2F1. Defects in this gene are a cause of childhood cancer retinoblastoma (RB), bladder cancer, and osteogenic sarcoma. [provided by RefSeq, Jul 2008]

**Synonyms:** OSRC; p105-Rb; pp110; PPP1R130; pRb; RB

**Protein Families:** Druggable Genome, Transcription Factors

**Protein Pathways:** Bladder cancer, Cell cycle, Chronic myeloid leukemia, Glioma, Melanoma, Non-small cell lung cancer, Pancreatic cancer, Pathways in cancer, Prostate cancer, Small cell lung cancer

### Product images:



HEK293T cells were transfected with the pCMV6-ENTRY control (Left lane) or pCMV6-ENTRY RB1 ([RC206933], Right lane) cDNA for 48 hrs and lysed. Equivalent amounts of cell lysates (5 ug per lane) were separated by SDS-PAGE and immunoblotted with anti-RB1 mouse monoclonal antibody.1:500`