

## Product datasheet for CF805647

### PAGE1 Mouse Monoclonal Antibody [Clone ID: OTI3D7]

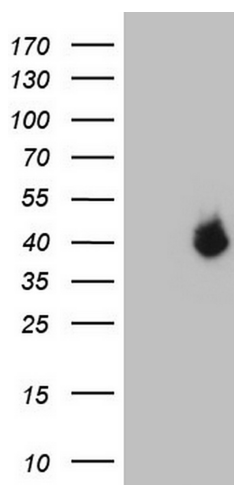
#### Product data:

Product Type:	Primary Antibodies
Clone Name:	OTI3D7
Applications:	WB
Recommended Dilution:	WB 1:500
Reactivity:	Human
Host:	Mouse
Isotype:	IgG1
Clonality:	Monoclonal
Immunogen:	Full length human recombinant protein of human PAGE1 (NP_003776) produced in E.coli.
Formulation:	Lyophilized powder (original buffer 1X PBS, pH 7.3, 8% trehalose)
Reconstitution Method:	For reconstitution, we recommend adding 100uL distilled water to a final antibody concentration of about 1 mg/mL. To use this carrier-free antibody for conjugation experiment, we strongly recommend performing another round of desalting process. (OriGene recommends Zeba Spin Desalting Columns, 7KMWCO from Thermo Scientific)
Purification:	Purified from mouse ascites fluids or tissue culture supernatant by affinity chromatography (protein A/G)
Conjugation:	Unconjugated
Storage:	Store at -20°C as received.
Stability:	Stable for 12 months from date of receipt.
Predicted Protein Size:	16 kDa
Gene Name:	PAGE family member 1
Database Link:	<a href="#">NP_003776</a> <a href="#">Entrez Gene 8712 Human</a> <a href="#">O75459</a>
Background:	This gene belongs to a family of genes that are expressed in a variety of tumors but not in normal tissues, except for the testis. Unlike the other gene family members, this gene does not encode an antigenic peptide. Nothing is presently known about the function of this protein. [provided by RefSeq, Jul 2008]


[View online »](#)

**Synonyms:** AL5; CT16.3; GAGE-9; GAGEB1; PAGE-1

**Product images:**



HEK293T cells were transfected with the pCMV6-ENTRY control (Left lane) or pCMV6-ENTRY PAGE1 ([RC202446], Right lane) cDNA for 48 hrs and lysed. Equivalent amounts of cell lysates (5 ug per lane) were separated by SDS-PAGE and immunoblotted with anti-PAGE1. Positive lysates [LY418433] (100ug) and [LC418433] (20ug) can be purchased separately from OriGene.