

## Product datasheet for **CF805629**

### CANT1 Mouse Monoclonal Antibody [Clone ID: OTI7F8]

#### Product data:

Product Type:	Primary Antibodies
Clone Name:	OTI7F8
Applications:	IHC, WB
Recommended Dilution:	WB 1:2000, IHC 1:150
Reactivity:	Human, Mouse, Rat
Host:	Mouse
Isotype:	IgG1
Clonality:	Monoclonal
Immunogen:	Human recombinant protein fragment corresponding to amino acids 63-401 of human CANT1 (NP_620148) produced in E.coli.
Formulation:	Lyophilized powder (original buffer 1X PBS, pH 7.3, 8% trehalose)
Reconstitution Method:	For reconstitution, we recommend adding 100uL distilled water to a final antibody concentration of about 1 mg/mL. To use this carrier-free antibody for conjugation experiment, we strongly recommend performing another round of desalting process. (OriGene recommends Zeba Spin Desalting Columns, 7KMWCO from Thermo Scientific)
Purification:	Purified from mouse ascites fluids or tissue culture supernatant by affinity chromatography (protein A/G)
Conjugation:	Unconjugated
Storage:	Store at -20°C as received.
Stability:	Stable for 12 months from date of receipt.
Predicted Protein Size:	44.7 kDa
Gene Name:	calcium activated nucleotidase 1
Database Link:	<a href="#">NP_620148</a> <a href="#">Entrez Gene 76025 Mouse</a> <a href="#">Entrez Gene 246272 Rat</a> <a href="#">Entrez Gene 124583 Human</a> <a href="#">Q8WVQ1</a>



[View online »](#)

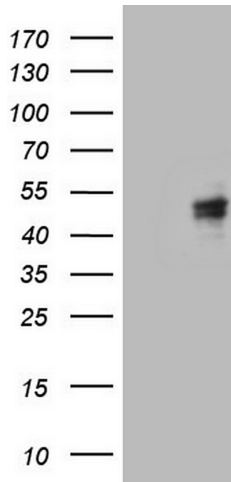
**Background:** This protein encoded by this gene belongs to the apyrase family. It functions as a calcium-dependent nucleotidase with a preference for UDP. Mutations in this gene are associated with Desbuquois dysplasia with hand anomalies. Alternatively spliced transcript variants have been noted for this gene. [provided by RefSeq, Mar 2010]

**Synonyms:** DBQD; DBQD1; SCAN-1; SCAN1; SHAPY

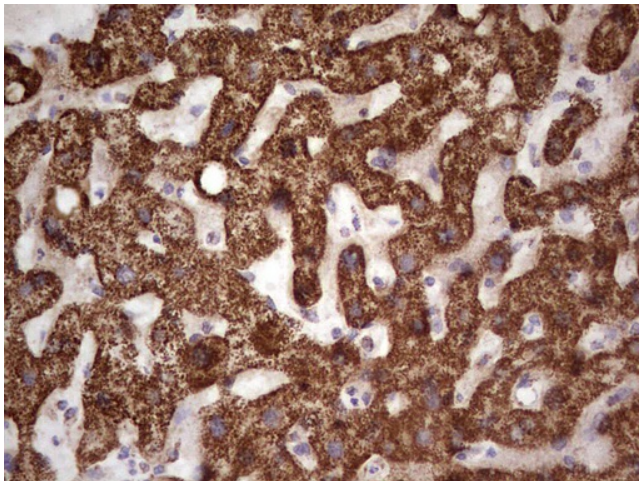
**Protein Families:** Secreted Protein

**Protein Pathways:** Purine metabolism, Pyrimidine metabolism

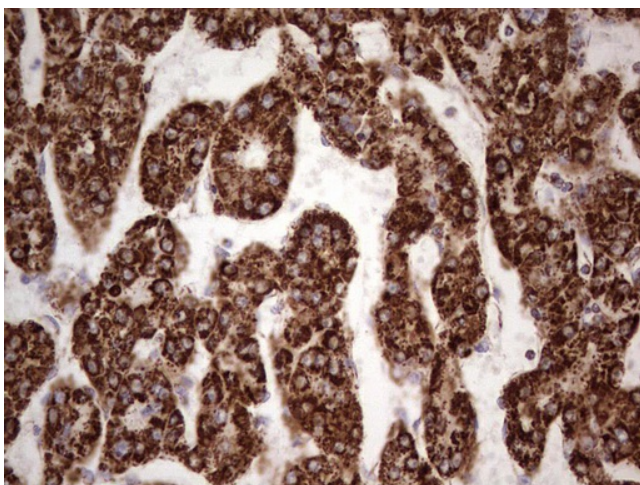
**Product images:**



HEK293T cells were transfected with the pCMV6-ENTRY control (Cat# [PS100001], Left lane) or pCMV6-ENTRY CANT1 (Cat# [RC202348], Right lane) cDNA for 48 hrs and lysed. Equivalent amounts of cell lysates (5 ug per lane) were separated by SDS-PAGE and immunoblotted with anti-CANT1(Cat# [TA805629]). Positive lysates [LY408394] (100ug) and [LC408394] (20ug) can be purchased separately from OriGene.



Immunohistochemical staining of paraffin-embedded Human liver tissue within the normal limits using anti-CANT1 mouse monoclonal antibody. (Heat-induced epitope retrieval by 1mM EDTA in 10mM Tris, pH8.5, 120°C for 3min, [TA805629])



Immunohistochemical staining of paraffin-embedded Carcinoma of Human liver tissue using anti-CANT1 mouse monoclonal antibody. (Heat-induced epitope retrieval by 1mM EDTA in 10mM Tris, pH8.5, 120°C for 3min, [TA805629])