

## Product datasheet for **CF805486**

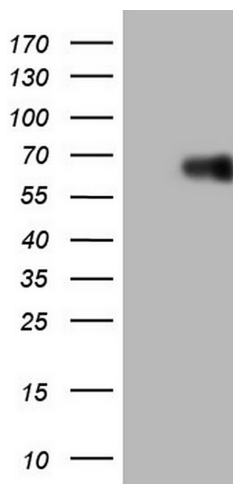
### LRRTM1 Mouse Monoclonal Antibody [Clone ID: OTI2C6]

#### Product data:

Product Type:	Primary Antibodies
Clone Name:	OTI2C6
Applications:	WB
Recommended Dilution:	WB 1:2000
Reactivity:	Human, Mouse, Rat
Host:	Mouse
Isotype:	IgG2b
Clonality:	Monoclonal
Immunogen:	Human recombinant protein fragment corresponding to amino acids 182-422 of human LRRTM1 (NP_849161) produced in E.coli.
Formulation:	Lyophilized powder (original buffer 1X PBS, pH 7.3, 8% trehalose)
Reconstitution Method:	For reconstitution, we recommend adding 100uL distilled water to a final antibody concentration of about 1 mg/mL. To use this carrier-free antibody for conjugation experiment, we strongly recommend performing another round of desalting process. (OriGene recommends Zeba Spin Desalting Columns, 7KMWCO from Thermo Scientific)
Purification:	Purified from mouse ascites fluids or tissue culture supernatant by affinity chromatography (protein A/G)
Conjugation:	Unconjugated
Storage:	Store at -20°C as received.
Stability:	Stable for 12 months from date of receipt.
Predicted Protein Size:	58.5 kDa
Gene Name:	leucine rich repeat transmembrane neuronal 1
Database Link:	<a href="#">NP_849161</a> <a href="#">Entrez Gene 74342 MouseEntrez Gene 679668 RatEntrez Gene 347730 Human Q86UE6</a>
Synonyms:	FLJ32082
Protein Families:	Transmembrane



[View online »](#)

**Product images:**

HEK293T cells were transfected with the pCMV6-ENTRY control (Left lane) or pCMV6-ENTRY LRRTM1 ([RC207949], Right lane) cDNA for 48 hrs and lysed. Equivalent amounts of cell lysates (5 ug per lane) were separated by SDS-PAGE and immunoblotted with anti-LRRTM1. Positive lysates [LY405855] (100ug) and [LC405855] (20ug) can be purchased separately from OriGene.