

## Product datasheet for **CF805442**

### SENP8 Mouse Monoclonal Antibody [Clone ID: OTI10C11]

#### Product data:

Product Type:	Primary Antibodies
Clone Name:	OTI10C11
Applications:	WB
Recommended Dilution:	WB 1:2000
Reactivity:	Human, Mouse, Rat
Host:	Mouse
Isotype:	IgG1
Clonality:	Monoclonal
Immunogen:	Full length human recombinant protein of human SENP8 (NP_660205) produced in E.coli.
Formulation:	Lyophilized powder (original buffer 1X PBS, pH 7.3, 8% trehalose)
Reconstitution Method:	For reconstitution, we recommend adding 100uL distilled water to a final antibody concentration of about 1 mg/mL. To use this carrier-free antibody for conjugation experiment, we strongly recommend performing another round of desalting process. (OriGene recommends Zeba Spin Desalting Columns, 7KMWCO from Thermo Scientific)
Purification:	Purified from mouse ascites fluids or tissue culture supernatant by affinity chromatography (protein A/G)
Conjugation:	Unconjugated
Storage:	Store at -20°C as received.
Stability:	Stable for 12 months from date of receipt.
Predicted Protein Size:	23.9 kDa
Gene Name:	SUMO peptidase family member, NEDD8 specific
Database Link:	<a href="#">NP_660205</a> <a href="#">Entrez Gene 71599 MouseEntrez Gene 315723 RatEntrez Gene 123228 Human Q96LD8</a>
Background:	This gene encodes a cysteine protease that is a member of the sentrin-specific protease family. The encoded protein is involved in processing and deconjugation of the ubiquitin-like protein termed, neural precursor cell expressed developmentally downregulated 8. Alternate splicing results in multiple transcript variants. [provided by RefSeq, Oct 2009]

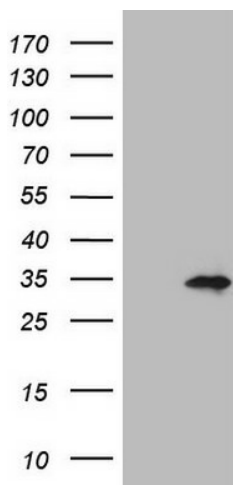


[View online »](#)

Synonyms: DEN1; NEDP1; PRSC2

Protein Families: Druggable Genome, Protease

### Product images:



HEK293T cells were transfected with the pCMV6-ENTRY control (Left lane) or pCMV6-ENTRY SENP8 ([RC206791], Right lane) cDNA for 48 hrs and lysed. Equivalent amounts of cell lysates (5 ug per lane) were separated by SDS-PAGE and immunoblotted with anti-SENP8 (1:2000). Positive lysates [LY407943] (100ug) and [LC407943] (20ug) can be purchased separately from OriGene.