

## Product datasheet for **CF805375**

### CD56 (NCAM1) Mouse Monoclonal Antibody [Clone ID: OTI2F6]

#### Product data:

Product Type:	Primary Antibodies
Clone Name:	OTI2F6
Applications:	IHC, WB
Recommended Dilution:	WB 1:2000, IHC 1:150
Reactivity:	Human, Mouse, Rat
Host:	Mouse
Isotype:	IgG1
Clonality:	Monoclonal
Immunogen:	Human recombinant protein fragment corresponding to amino acids 20-718 of human NCAM1 (NP_851996) produced in HEK293T cell.
Formulation:	Lyophilized powder (original buffer 1X PBS, pH 7.3, 8% trehalose)
Reconstitution Method:	For reconstitution, we recommend adding 100uL distilled water to a final antibody concentration of about 1 mg/mL. To use this carrier-free antibody for conjugation experiment, we strongly recommend performing another round of desalting process. (OriGene recommends Zeba Spin Desalting Columns, 7KMWCO from Thermo Scientific)
Purification:	Purified from mouse ascites fluids or tissue culture supernatant by affinity chromatography (protein A/G)
Conjugation:	Unconjugated
Storage:	Store at -20°C as received.
Stability:	Stable for 12 months from date of receipt.
Predicted Protein Size:	94.4 kDa
Gene Name:	neural cell adhesion molecule 1
Database Link:	<a href="#">NP_851996</a> <a href="#">Entrez Gene 17967 Mouse</a> <a href="#">Entrez Gene 24586 Rat</a> <a href="#">Entrez Gene 4684 Human</a> <a href="#">P13591</a>



[View online »](#)

**Background:**

This gene encodes a cell adhesion protein which is a member of the immunoglobulin superfamily. The encoded protein is involved in cell-to-cell interactions as well as cell-matrix interactions during development and differentiation. The encoded protein has been shown to be involved in development of the nervous system, and for cells involved in the expansion of T cells and dendritic cells which play an important role in immune surveillance. Alternative splicing results in multiple transcript variants. [provided by RefSeq, Jun 2011]

**Synonyms:**

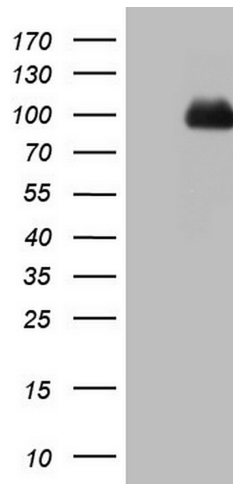
CD56; MSK39; NCAM

**Protein Families:**

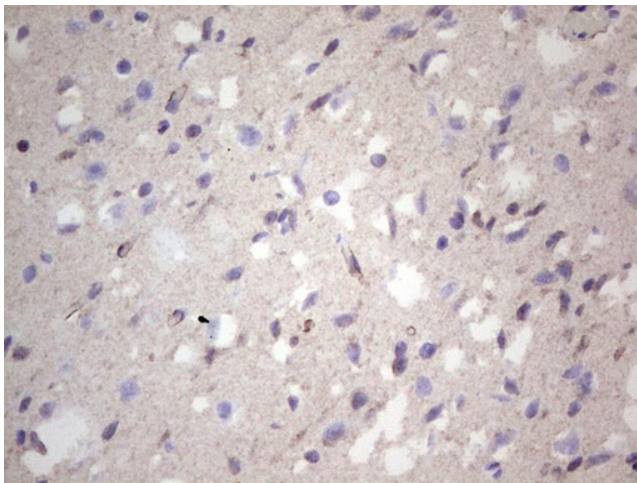
Druggable Genome, ES Cell Differentiation/IPS, Transmembrane

**Protein Pathways:**

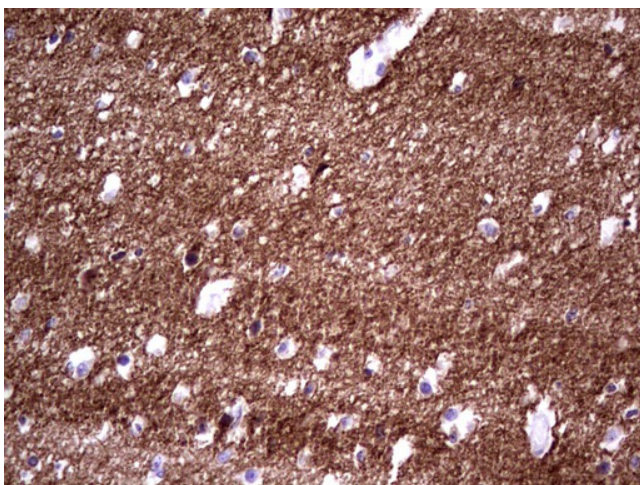
Cell adhesion molecules (CAMs), Prion diseases

**Product images:**

HEK293T cells were transfected with the pCMV6-ENTRY control (Left lane) or pCMV6-ENTRY NCAM1 ([RC207890], Right lane) cDNA for 48 hrs and lysed. Equivalent amounts of cell lysates (5 ug per lane) were separated by SDS-PAGE and immunoblotted with anti-NCAM1. Positive lysates [LY405745] (100ug) and [LC405745] (20ug) can be purchased separately from OriGene.



Immunohistochemical staining of paraffin-embedded Human adult brain tissue using anti-NCAM1 Mouse monoclonal antibody. ([TA805375]; heat-induced epitope retrieval by 1mM EDTA in 10mM Tris, pH8.5, 120°C for 3min)



Immunohistochemical staining of paraffin-embedded Human embryonic brain cortex tissue using anti-NCAM1 Mouse monoclonal antibody. (TA805375); heat-induced epitope retrieval by 1mM EDTA in 10mM Tris, pH8.5, 120°C for 3min)