

Product datasheet for **CF805301**

TWIST2 Mouse Monoclonal Antibody [Clone ID: OTI9F11]

Product data:

Product Type:	Primary Antibodies
Clone Name:	OTI9F11
Applications:	WB
Recommended Dilution:	WB 1:2000
Reactivity:	Human, Mouse, Rat
Host:	Mouse
Isotype:	IgG1
Clonality:	Monoclonal
Immunogen:	Full length human recombinant protein of human TWIST2 (NP_476527) produced in E.coli.
Formulation:	Lyophilized powder (original buffer 1X PBS, pH 7.3, 8% trehalose)
Reconstitution Method:	For reconstitution, we recommend adding 100uL distilled water to a final antibody concentration of about 1 mg/mL. To use this carrier-free antibody for conjugation experiment, we strongly recommend performing another round of desalting process. (OriGene recommends Zeba Spin Desalting Columns, 7KMWCO from Thermo Scientific)
Purification:	Purified from mouse ascites fluids or tissue culture supernatant by affinity chromatography (protein A/G)
Conjugation:	Unconjugated
Storage:	Store at -20°C as received.
Stability:	Stable for 12 months from date of receipt.
Predicted Protein Size:	17.9 kDa
Gene Name:	twist family bHLH transcription factor 2
Database Link:	NP_476527 Entrez Gene 13345 MouseEntrez Gene 59327 RatEntrez Gene 117581 Human Q8WVJ9



[View online »](#)

Background:

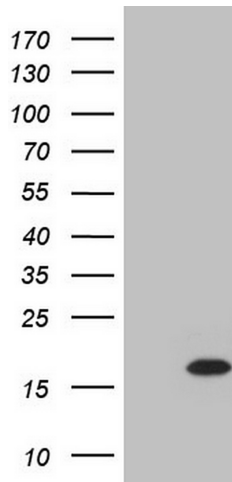
Basic helix-loop-helix (bHLH) transcription factors have been implicated in cell lineage determination and differentiation. The protein encoded by this gene is a bHLH transcription factor and shares similarity with another bHLH transcription factor, Twist. It is thought that during osteoblast development this protein may inhibit osteoblast maturation and maintain cells in a preosteoblast phenotype. Two transcript variants encoding the same protein have been found for this gene. [provided by RefSeq, Dec 2012]

Synonyms:

AMS; BBR SAY; bHLHa39; DERMO1; FFDD3; SETLSS

Protein Families:

Druggable Genome, Transcription Factors

Product images:

HEK293T cells were transfected with the pCMV6-ENTRY control (Left lane) or pCMV6-ENTRY TWIST2 ([RC205006], Right lane) cDNA for 48 hrs and lysed. Equivalent amounts of cell lysates (5 ug per lane) were separated by SDS-PAGE and immunoblotted with anti-TWIST2. Positive lysates [LY403298] (100ug) and [LC403298] (20ug) can be purchased separately from OriGene.