

Product datasheet for **CF805300**

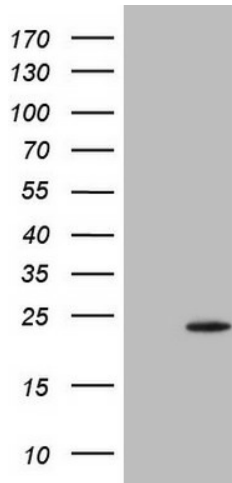
TWIST2 Mouse Monoclonal Antibody [Clone ID: OTI6G9]

Product data:

Product Type:	Primary Antibodies
Clone Name:	OTI6G9
Applications:	WB
Recommended Dilution:	WB 1:2000
Reactivity:	Human, Mouse, Rat
Host:	Mouse
Isotype:	IgG1
Clonality:	Monoclonal
Immunogen:	Full length human recombinant protein of human TWIST2 (NP_476527) produced in E.coli.
Formulation:	Lyophilized powder (original buffer 1X PBS, pH 7.3, 8% trehalose)
Reconstitution Method:	For reconstitution, we recommend adding 100uL distilled water to a final antibody concentration of about 1 mg/mL. To use this carrier-free antibody for conjugation experiment, we strongly recommend performing another round of desalting process. (OriGene recommends Zeba Spin Desalting Columns, 7KMWCO from Thermo Scientific)
Purification:	Purified from mouse ascites fluids or tissue culture supernatant by affinity chromatography (protein A/G)
Conjugation:	Unconjugated
Storage:	Store at -20°C as received.
Stability:	Stable for 12 months from date of receipt.
Gene Name:	twist family bHLH transcription factor 2
Database Link:	NP_476527 Entrez Gene 13345 Mouse Entrez Gene 59327 Rat Entrez Gene 117581 Human Q8WVJ9
Synonyms:	AMS; BBR SAY; bHLHa39; DERMO1; FFDD3; SETLSS
Protein Families:	Druggable Genome, Transcription Factors



[View online »](#)

Product images:

HEK293T cells were transfected with the pCMV6-ENTRY control (Left lane) or pCMV6-ENTRY TWIST2 ([RC205006], Right lane) cDNA for 48 hrs and lysed. Equivalent amounts of cell lysates (5 ug per lane) were separated by SDS-PAGE and immunoblotted with anti-TWIST2. Positive lysates [LY403298] (100ug) and [LC403298] (20ug) can be purchased separately from OriGene.