

Product datasheet for **CF805275**

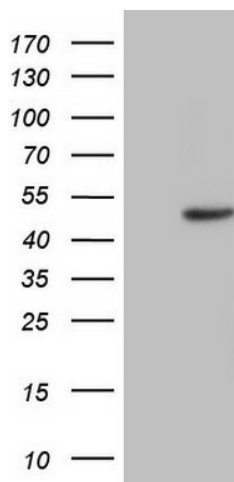
TRIB1 Mouse Monoclonal Antibody [Clone ID: OTI1B11]

Product data:

| | |
|-------------------------|--|
| Product Type: | Primary Antibodies |
| Clone Name: | OTI1B11 |
| Applications: | WB |
| Recommended Dilution: | WB 1:2000 |
| Reactivity: | Human, Mouse, Rat |
| Host: | Mouse |
| Isotype: | IgG1 |
| Clonality: | Monoclonal |
| Immunogen: | Full length human recombinant protein of human TRIB1 (NP_079471) produced in HEK293T cell. |
| Formulation: | Lyophilized powder (original buffer 1X PBS, pH 7.3, 8% trehalose) |
| Reconstitution Method: | For reconstitution, we recommend adding 100uL distilled water to a final antibody concentration of about 1 mg/mL. To use this carrier-free antibody for conjugation experiment, we strongly recommend performing another round of desalting process. (OriGene recommends Zeba Spin Desalting Columns, 7KMWCO from Thermo Scientific) |
| Purification: | Purified from mouse ascites fluids or tissue culture supernatant by affinity chromatography (protein A/G) |
| Conjugation: | Unconjugated |
| Storage: | Store at -20°C as received. |
| Stability: | Stable for 12 months from date of receipt. |
| Predicted Protein Size: | 40.8 kDa |
| Gene Name: | tribbles pseudokinase 1 |
| Database Link: | NP_079471 Entrez Gene 78969 Rat Entrez Gene 211770 Mouse Entrez Gene 10221 Human Q96RU8 |
| Synonyms: | C8FW; GIG-2; GIG2; SKIP1; TRB-1; TRB1 |
| Protein Families: | Druggable Genome, Protein Kinase |



[View online »](#)

Product images:

HEK293T cells were transfected with the pCMV6-ENTRY control (Left lane) or pCMV6-ENTRY TRIB1 ([RC209219], Right lane) cDNA for 48 hrs and lysed. Equivalent amounts of cell lysates (5 ug per lane) were separated by SDS-PAGE and immunoblotted with anti-TRIB1. Positive lysates [LY410846] (100ug) and [LC410846] (20ug) can be purchased separately from OriGene.