

Product datasheet for **CF805274**

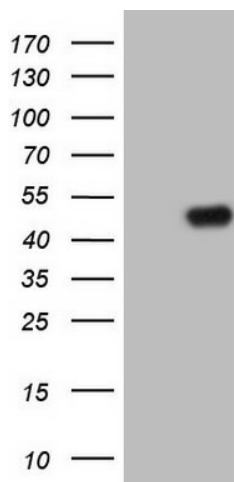
TRIB1 Mouse Monoclonal Antibody [Clone ID: OTI8C8]

Product data:

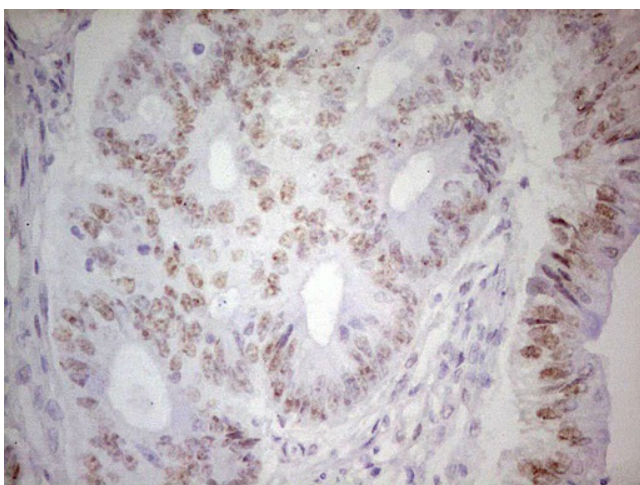
Product Type:	Primary Antibodies
Clone Name:	OTI8C8
Applications:	IHC, WB
Recommend Dilution:	WB 1:2000, IHC 1:150
Reactivity:	Human
Host:	Mouse
Isotype:	IgG1
Clonality:	Monoclonal
Immunogen:	Full length human recombinant protein of human TRIB1 (NP_079471) produced in HEK293T cell.
Formulation:	PBS (pH7.3), 8% Trehalose
Reconstitution Method:	Reconstitute with PBS (pH7.3). To use this carrier-free antibody for conjugation experiment, we strongly recommend you to perform another round of desalting process. (OriGene recommends Zeba Spin Desalting Columns, 7KMWCO from Thermo Scientific)
Purification:	Purified from mouse ascites fluids by affinity chromatography
Gene Name:	Homo sapiens tribbles pseudokinase 1 (TRIB1), transcript variant 1, mRNA.
Database Link:	NP_079471 Entrez Gene 10221 Human
Synonyms:	C8FW; GIG-2; GIG2; SKIP1; TRB-1; TRB1
Protein Families:	Druggable Genome, Protein Kinase



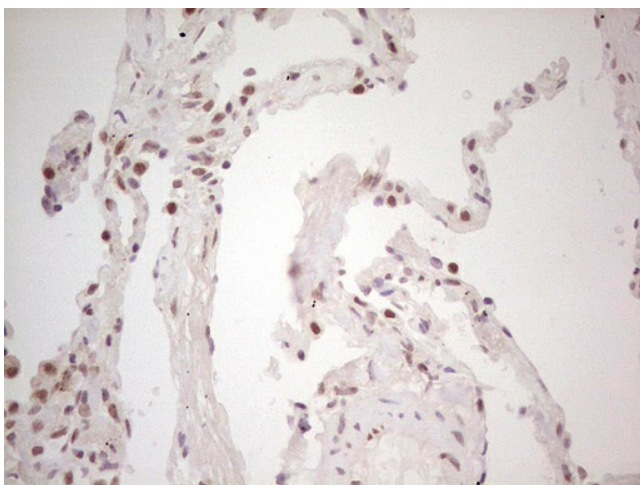
[View online »](#)

Product images:

HEK293T cells were transfected with the pCMV6-ENTRY control (Left lane) or pCMV6-ENTRY TRIB1 (RC209219, Right lane) cDNA for 48 hrs and lysed. Equivalent amounts of cell lysates (5 ug per lane) were separated by SDS-PAGE and immunoblotted with anti-TRIB1. Positive lysates LY410846 (100ug) and LC410846 (20ug) can be purchased separately from OriGene.



Immunohistochemical staining of paraffin-embedded Adenocarcinoma of Human colon tissue using anti-TRIB1 mouse monoclonal antibody. (Heat-induced epitope retrieval by 1 mM EDTA in 10mM Tris, pH8.5, 120°C for 3min, TA805274)



Immunohistochemical staining of paraffin-embedded Human lung tissue within the normal limits using anti-TRIB1 mouse monoclonal antibody. (Heat-induced epitope retrieval by 1 mM EDTA in 10mM Tris, pH8.5, 120°C for 3min, TA805274)