

## Product datasheet for **CF805208**

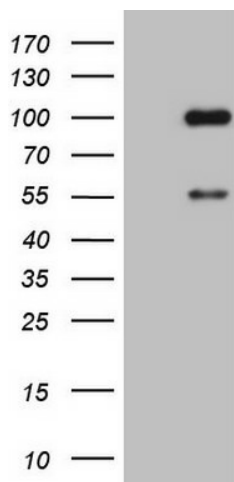
### ADAMTS4 Mouse Monoclonal Antibody [Clone ID: OTI6F8]

#### Product data:

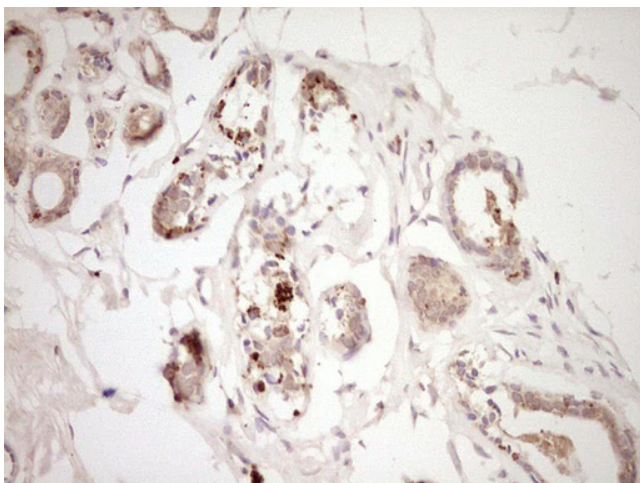
Product Type:	Primary Antibodies
Clone Name:	OTI6F8
Applications:	IHC, WB
Recommended Dilution:	WB 1:2000
Reactivity:	Human, Mouse, Rat
Host:	Mouse
Isotype:	IgG1
Clonality:	Monoclonal
Immunogen:	Human recombinant protein fragment corresponding to amino acids 296-577 of human ADAMTS4 (NP_005090) produced in E.coli.
Formulation:	Lyophilized powder (original buffer 1X PBS, pH 7.3, 8% trehalose)
Reconstitution Method:	For reconstitution, we recommend adding 100uL distilled water to a final antibody concentration of about 1 mg/mL. To use this carrier-free antibody for conjugation experiment, we strongly recommend performing another round of desalting process. (OriGene recommends Zeba Spin Desalting Columns, 7KMWCO from Thermo Scientific)
Purification:	Purified from mouse ascites fluids or tissue culture supernatant by affinity chromatography (protein A/G)
Conjugation:	Unconjugated
Storage:	Store at -20°C as received.
Stability:	Stable for 12 months from date of receipt.
Gene Name:	ADAM metallopeptidase with thrombospondin type 1 motif 4
Database Link:	<a href="#">NP_005090</a> <a href="#">Entrez Gene 66015 Rat</a> <a href="#">Entrez Gene 240913 Mouse</a> <a href="#">Entrez Gene 9507 Human</a> <a href="#">O75173</a>
Synonyms:	ADAMTS-2; ADAMTS-4; ADMP-1
Protein Families:	Druggable Genome, Protease, Secreted Protein, Transmembrane



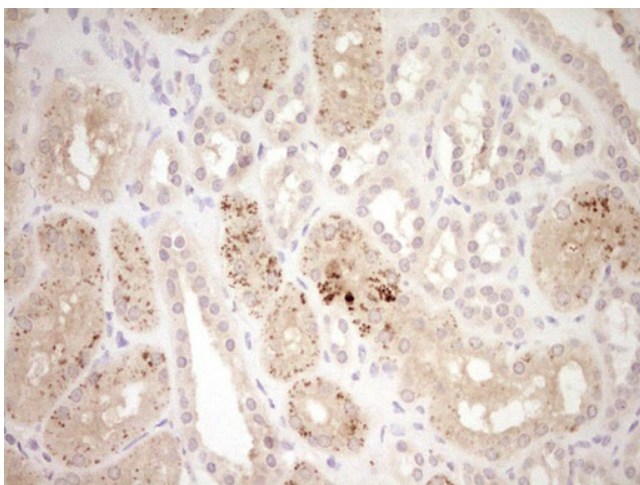
[View online »](#)

**Product images:**

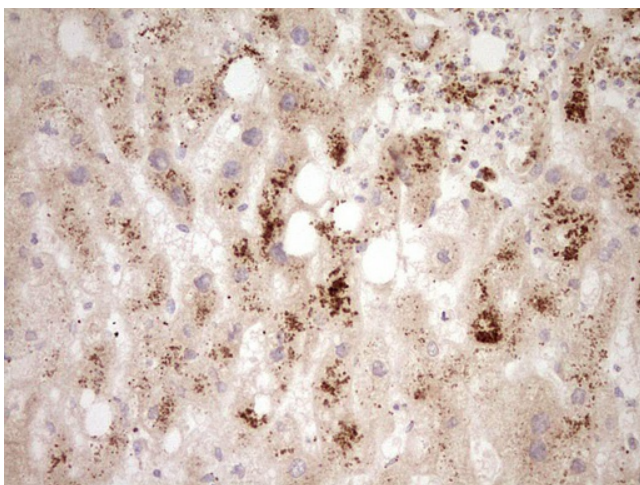
HEK293T cells were transfected with the pCMV6-ENTRY control (Cat# [PS100001], Left lane) or pCMV6-ENTRY ADAMTS4 (Cat# [RC209226], Right lane) cDNA for 48 hrs and lysed. Equivalent amounts of cell lysates (5 ug per lane) were separated by SDS-PAGE and immunoblotted with anti-ADAMTS4 (Cat# [TA805208]). Positive lysates [LY417514] (100ug) and [LC417514] (20ug) can be purchased separately from OriGene.



Immunohistochemical staining of paraffin-embedded Human breast tissue within the normal limits using anti-ADAMTS4 mouse monoclonal antibody. (Heat-induced epitope retrieval by Tris-EDTA, pH8.0, [TA805208]) Dilution: 1:150



Immunohistochemical staining of paraffin-embedded Human Kidney tissue within the normal limits using anti-ADAMTS4 mouse monoclonal antibody. (Heat-induced epitope retrieval by Tris-EDTA, pH8.0, [TA805208]) Dilution: 1:150



Immunohistochemical staining of paraffin-embedded Human liver tissue within the normal limits using anti-ADAMTS4 mouse monoclonal antibody. (Heat-induced epitope retrieval by Tris-EDTA, pH8.0, [TA805208]) Dilution: 1:150