

## Product datasheet for **CF805183**

### CD117 Mouse Monoclonal Antibody [Clone ID: OTI2C1H4]

#### Product data:

Product Type:	Primary Antibodies
Clone Name:	OTI2C1H4
Applications:	WB
Recommended Dilution:	WB 1:2000
Reactivity:	Human
Host:	Mouse
Isotype:	IgG1
Clonality:	Monoclonal
Immunogen:	Human recombinant protein fragment corresponding to amino acids 546-976 of human KIT (NP_000213) produced in E.coli.
Formulation:	Lyophilized powder (original buffer 1X PBS, pH 7.3, 8% trehalose)
Reconstitution Method:	For reconstitution, we recommend adding 100uL distilled water to a final antibody concentration of about 1 mg/mL. To use this carrier-free antibody for conjugation experiment, we strongly recommend performing another round of desalting process. (OriGene recommends Zeba Spin Desalting Columns, 7KMWCO from Thermo Scientific)
Purification:	Purified from mouse ascites fluids or tissue culture supernatant by affinity chromatography (protein A/G)
Conjugation:	Unconjugated
Storage:	Store at -20°C as received.
Stability:	Stable for 12 months from date of receipt.
Predicted Protein Size:	109.7 kDa
Gene Name:	KIT proto-oncogene, receptor tyrosine kinase
Database Link:	<a href="#">NP_000213</a> <a href="#">Entrez Gene 3815 Human P10721</a>
Synonyms:	C-Kit; CD117; PBT; SCFR

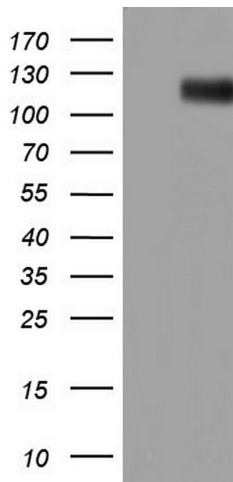


[View online »](#)

**Protein Families:** Adult stem cells, Druggable Genome, Embryonic stem cells, ES Cell Differentiation/IPS, Protein Kinase, Stem cell - Pluripotency, Transmembrane

**Protein Pathways:** Acute myeloid leukemia, Cytokine-cytokine receptor interaction, Endocytosis, Hematopoietic cell lineage, Melanogenesis, Pathways in cancer

### Product images:



HEK293T cells were transfected with the pCMV6-ENTRY control (Left lane) or pCMV6-ENTRY KIT ([RC209839], Right lane) cDNA for 48 hrs and lysed. Equivalent amounts of cell lysates (5 ug per lane) were separated by SDS-PAGE and immunoblotted with anti-KIT. Positive lysates [LY424857] (100ug) and [LC424857] (20ug) can be purchased separately from OriGene.