

Product datasheet for **CF805152**

Nkx3.1 (NKX3-1) Mouse Monoclonal Antibody [Clone ID: OTI2A5]

Product data:

| | |
|--------------------------------|---|
| Product Type: | Primary Antibodies |
| Clone Name: | OTI2A5 |
| Applications: | IHC, WB |
| Recommended Dilution: | WB 1:2000, IHC 1:150 |
| Reactivity: | Human |
| Host: | Mouse |
| Isotype: | IgG2a |
| Clonality: | Monoclonal |
| Immunogen: | Full length human recombinant protein of human NKX3-1 (NP_006158) produced in E.coli. |
| Formulation: | Lyophilized powder (original buffer 1X PBS, pH 7.3, 8% trehalose) |
| Reconstitution Method: | For reconstitution, we recommend adding 100uL distilled water to a final antibody concentration of about 1 mg/mL. To use this carrier-free antibody for conjugation experiment, we strongly recommend performing another round of desalting process. (OriGene recommends Zeba Spin Desalting Columns, 7KMWCO from Thermo Scientific) |
| Purification: | Purified from mouse ascites fluids or tissue culture supernatant by affinity chromatography (protein A/G) |
| Conjugation: | Unconjugated |
| Storage: | Store at -20°C as received. |
| Stability: | Stable for 12 months from date of receipt. |
| Predicted Protein Size: | 26.2 kDa |
| Gene Name: | NK3 homeobox 1 |
| Database Link: | NP_006158 Entrez Gene 4824 Human Q99801 |
| Background: | This gene encodes a homeobox-containing transcription factor. This transcription factor functions as a negative regulator of epithelial cell growth in prostate tissue. Aberrant expression of this gene is associated with prostate tumor progression. Alternate splicing results in multiple transcript variants of this gene. [provided by RefSeq, Jan 2012] |



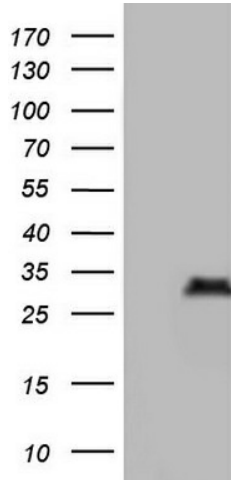
[View online »](#)

Synonyms: BAPX2; NKX3; NKX3.1; NKX3A

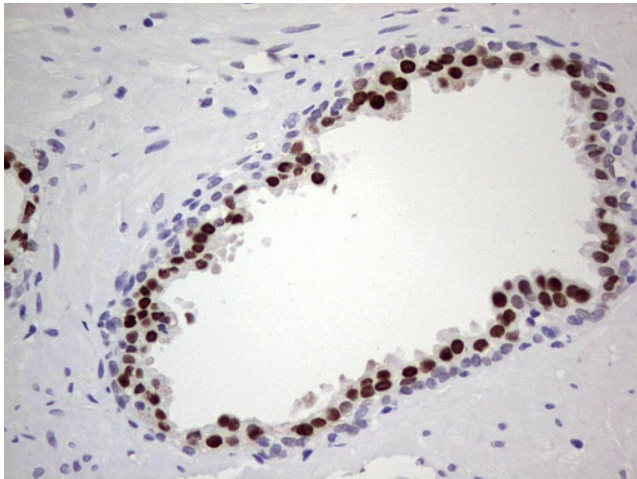
Protein Families: Druggable Genome, Transcription Factors

Protein Pathways: Pathways in cancer, Prostate cancer

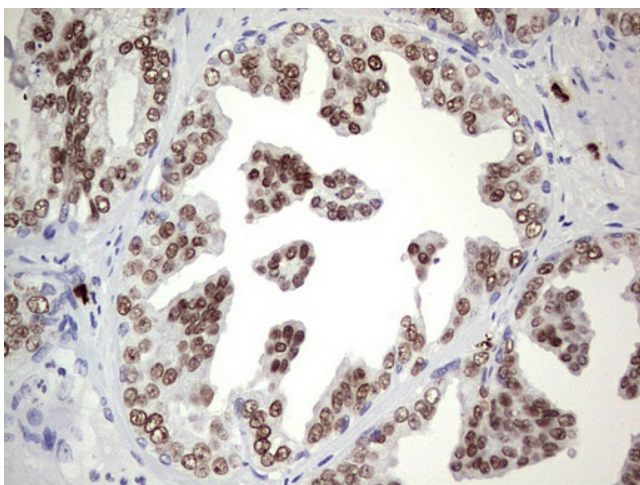
Product images:



HEK293T cells were transfected with the pCMV6-ENTRY control (Left lane) or pCMV6-ENTRY NKX3-1 ([RC210374], Right lane) cDNA for 48 hrs and lysed. Equivalent amounts of cell lysates (5 ug per lane) were separated by SDS-PAGE and immunoblotted with anti-NKX3-1. Positive lysates [LY401858] (100ug) and [LC401858] (20ug) can be purchased separately from OriGene.



Immunohistochemical staining of paraffin-embedded Human prostate tissue within the normal limits using anti-NKX3-1 mouse monoclonal antibody. (Heat-induced epitope retrieval by 1mM EDTA in 10mM Tris, pH8.5, 120°C for 3min, [TA805152])



Immunohistochemical staining of paraffin-embedded Carcinoma of Human prostate tissue using anti-NKX3-1 mouse monoclonal antibody. (Heat-induced epitope retrieval by 1mM EDTA in 10mM Tris, pH8.5, 120°C for 3min, [TA805152])