

## Product datasheet for **CF805135**

### **Nkx3.1 (NKX3-1) Mouse Monoclonal Antibody [Clone ID: OTI2E4]**

#### **Product data:**

<b>Product Type:</b>	Primary Antibodies
<b>Clone Name:</b>	OTI2E4
<b>Applications:</b>	IHC
<b>Recommended Dilution:</b>	IHC 1:150
<b>Reactivity:</b>	Human
<b>Host:</b>	Mouse
<b>Isotype:</b>	IgG1
<b>Clonality:</b>	Monoclonal
<b>Immunogen:</b>	Full length human recombinant protein of human NKX3-1 (NP_006158) produced in E.coli.
<b>Formulation:</b>	Lyophilized powder (original buffer 1X PBS, pH 7.3, 8% trehalose)
<b>Reconstitution Method:</b>	For reconstitution, we recommend adding 100uL distilled water to a final antibody concentration of about 1 mg/mL. To use this carrier-free antibody for conjugation experiment, we strongly recommend performing another round of desalting process. (OriGene recommends Zeba Spin Desalting Columns, 7KMWCO from Thermo Scientific)
<b>Purification:</b>	Purified from mouse ascites fluids or tissue culture supernatant by affinity chromatography (protein A/G)
<b>Conjugation:</b>	Unconjugated
<b>Storage:</b>	Store at -20°C as received.
<b>Stability:</b>	Stable for 12 months from date of receipt.
<b>Predicted Protein Size:</b>	26.2 kDa
<b>Gene Name:</b>	NK3 homeobox 1
<b>Database Link:</b>	<a href="#">NP_006158</a> <a href="#">Entrez Gene 4824 Human</a> <a href="#">Q99801</a>
<b>Background:</b>	This gene encodes a homeobox-containing transcription factor. This transcription factor functions as a negative regulator of epithelial cell growth in prostate tissue. Aberrant expression of this gene is associated with prostate tumor progression. Alternate splicing results in multiple transcript variants of this gene. [provided by RefSeq, Jan 2012]



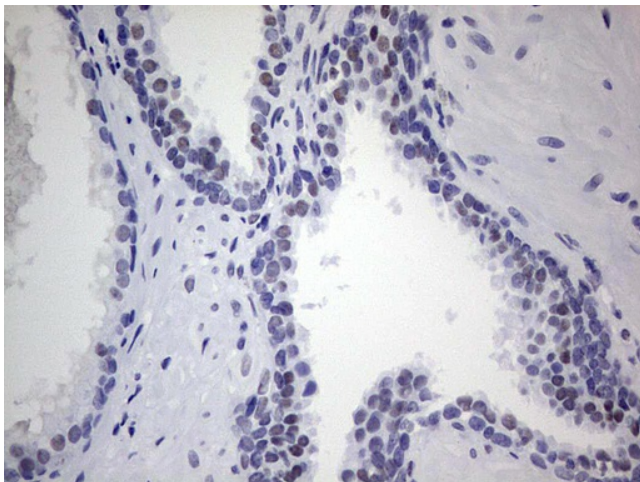
[View online »](#)

**Synonyms:** BAPX2; NKX3; NKX3.1; NKX3A

**Protein Families:** Druggable Genome, Transcription Factors

**Protein Pathways:** Pathways in cancer, Prostate cancer

**Product images:**



Immunohistochemical staining of paraffin-embedded Human prostate tissue within the normal limits using anti-NKX3-1 mouse monoclonal antibody. (Heat-induced epitope retrieval by 1mM EDTA in 10mM Tris, pH8.5, 120°C for 3min, [TA805135])