

Product datasheet for **CF805062**

MLH1 Mouse Monoclonal Antibody [Clone ID: OTI1B9]

Product data:

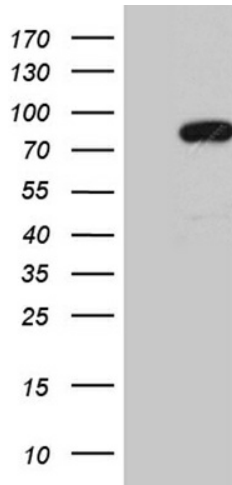
Product Type:	Primary Antibodies
Clone Name:	OTI1B9
Applications:	WB
Recommended Dilution:	WB 1:500~2000
Reactivity:	Human, Mouse, Rat
Host:	Mouse
Isotype:	IgG1
Clonality:	Monoclonal
Immunogen:	Human recombinant protein fragment corresponding to amino acids 299-527 of human MLH1(NP_000240) produced in E.coli.
Formulation:	Lyophilized powder (original buffer 1X PBS, pH 7.3, 8% trehalose)
Reconstitution Method:	For reconstitution, we recommend adding 100uL distilled water to a final antibody concentration of about 1 mg/mL. To use this carrier-free antibody for conjugation experiment, we strongly recommend performing another round of desalting process. (OriGene recommends Zeba Spin Desalting Columns, 7KMWCO from Thermo Scientific)
Purification:	Purified from mouse ascites fluids or tissue culture supernatant by affinity chromatography (protein A/G)
Conjugation:	Unconjugated
Storage:	Store at -20°C as received.
Stability:	Stable for 12 months from date of receipt.
Predicted Protein Size:	84.4 kDa
Gene Name:	mutL homolog 1
Database Link:	NP_000240 Entrez Gene 17350 Mouse Entrez Gene 81685 Rat Entrez Gene 4292 Human P40692
Synonyms:	COCA2; FCC2; hMLH1; HNPCC; HNPCC2; MMRCS1
Protein Families:	Druggable Genome



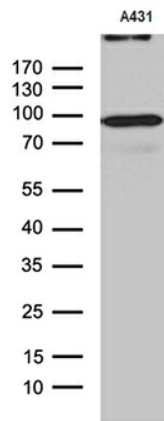
[View online »](#)

Protein Pathways: Colorectal cancer, Endometrial cancer, Mismatch repair, Pathways in cancer

Product images:



HEK293T cells were transfected with the pCMV6-ENTRY control (Left lane) or pCMV6-ENTRY MLH1 ([RC201607], Right lane) cDNA for 48 hrs and lysed. Equivalent amounts of cell lysates (5 ug per lane) were separated by SDS-PAGE and immunoblotted with anti-MLH1 (1:2000). Positive lysates [LY400096] (100ug) and [LC400096] (20ug) can be purchased separately from OriGene.



Western blot analysis of extracts (35ug) from A431 cell line by using anti-MLH1 monoclonal antibody (1:500).