

## Product datasheet for **CF804983**

### ID4 Mouse Monoclonal Antibody [Clone ID: OTI3H1]

#### Product data:

Product Type:	Primary Antibodies
Clone Name:	OTI3H1
Applications:	WB
Recommended Dilution:	WB 1:2000
Reactivity:	Human, Mouse, Rat
Host:	Mouse
Isotype:	IgG1
Clonality:	Monoclonal
Immunogen:	Full length human recombinant protein of human ID4 (NP_001537) produced in HEK293T cell.
Formulation:	Lyophilized powder (original buffer 1X PBS, pH 7.3, 8% trehalose)
Reconstitution Method:	For reconstitution, we recommend adding 100uL distilled water to a final antibody concentration of about 1 mg/mL. To use this carrier-free antibody for conjugation experiment, we strongly recommend performing another round of desalting process. (OriGene recommends Zeba Spin Desalting Columns, 7KMWCO from Thermo Scientific)
Purification:	Purified from mouse ascites fluids or tissue culture supernatant by affinity chromatography (protein A/G)
Conjugation:	Unconjugated
Storage:	Store at -20°C as received.
Stability:	Stable for 12 months from date of receipt.
Predicted Protein Size:	16.4 kDa
Gene Name:	inhibitor of DNA binding 4, HLH protein
Database Link:	<a href="#">NP_001537</a> <a href="#">Entrez Gene 15904 Mouse</a> <a href="#">Entrez Gene 291023 Rat</a> <a href="#">Entrez Gene 3400 Human</a> <a href="#">P47928</a>



[View online »](#)

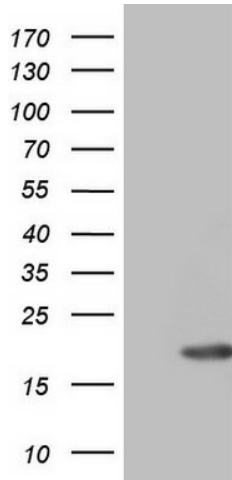
**Background:** This gene encodes a member of the inhibitor of DNA binding (ID) protein family. These proteins are basic helix-loop-helix transcription factors which can act as tumor suppressors but lack DNA binding activity. Consequently, the activity of the encoded protein depends on the protein binding partner. [provided by RefSeq, Dec 2011]

**Synonyms:** bHLHb27; IDB4

**Protein Families:** ES Cell Differentiation/IPS, Transcription Factors

**Protein Pathways:** TGF-beta signaling pathway

**Product images:**



HEK293T cells were transfected with the pCMV6-ENTRY control (Cat# [PS100001], Left lane) or pCMV6-ENTRY ID4 (Cat# [RC204170], Right lane) cDNA for 48 hrs and lysed. Equivalent amounts of cell lysates (5 ug per lane) were separated by SDS-PAGE and immunoblotted with anti-ID4 (Cat# [TA804983]). Positive lysates [LY419876] (100ug) and [LC419876] (20ug) can be purchased separately from OriGene.