

Product datasheet for **CF804931**

ErbB 4 (ERBB4) Mouse Monoclonal Antibody [Clone ID: OTI3A10]

Product data:

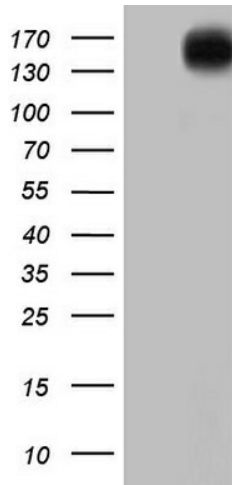
Product Type:	Primary Antibodies
Clone Name:	OTI3A10
Applications:	WB
Recommended Dilution:	WB 1:2000
Reactivity:	Human, Mouse, Rat
Host:	Mouse
Isotype:	IgG1
Clonality:	Monoclonal
Immunogen:	Human recombinant protein fragment corresponding to amino acids 992-1308 of human ERBB4 (NP_005226) produced in E.coli.
Formulation:	Lyophilized powder (original buffer 1X PBS, pH 7.3, 8% trehalose)
Reconstitution Method:	For reconstitution, we recommend adding 100uL distilled water to a final antibody concentration of about 1 mg/mL. To use this carrier-free antibody for conjugation experiment, we strongly recommend performing another round of desalting process. (OriGene recommends Zeba Spin Desalting Columns, 7KMWCO from Thermo Scientific)
Purification:	Purified from mouse ascites fluids or tissue culture supernatant by affinity chromatography (protein A/G)
Conjugation:	Unconjugated
Storage:	Store at -20°C as received.
Stability:	Stable for 12 months from date of receipt.
Predicted Protein Size:	144.2 kDa
Gene Name:	erb-b2 receptor tyrosine kinase 4
Database Link:	NP_005226 Entrez Gene 13869 Mouse Entrez Gene 59323 Rat Entrez Gene 2066 Human Q15303
Synonyms:	ALS19; HER4; p180erbB4
Protein Families:	Druggable Genome, Protein Kinase, Transmembrane



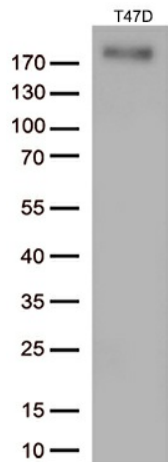
[View online »](#)

Protein Pathways: Calcium signaling pathway, Endocytosis, ErbB signaling pathway

Product images:



HEK293T cells were transfected with the pCMV6-ENTRY control (Cat# [PS100001], Left lane) or pCMV6-ENTRY ERBB4 (Cat# [RC220449], Right lane) cDNA for 48 hrs and lysed. Equivalent amounts of cell lysates (5 ug per lane) were separated by SDS-PAGE and immunoblotted with anti-ERBB4(Cat# [TA804931]). Positive lysates [LY401604] (100ug) and [LC401604] (20ug) can be purchased separately from OriGene.



Western blot analysis of extracts (35ug) from T47D cells by using anti-ERBB4 monoclonal antibody (1:250).