

Product datasheet for **CF804883**

Integrin Linked Kinase (ILK) Mouse Monoclonal Antibody [Clone ID: OTI2H3]

Product data:

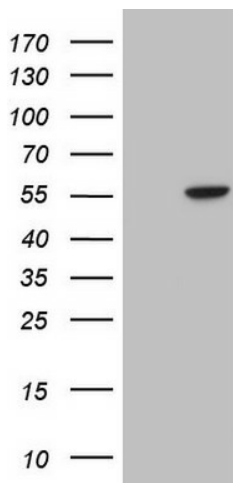
Product Type:	Primary Antibodies
Clone Name:	OTI2H3
Applications:	WB
Recommended Dilution:	WB 1:2000
Reactivity:	Human, Mouse, Rat
Host:	Mouse
Isotype:	IgG2b
Clonality:	Monoclonal
Immunogen:	Human recombinant protein fragment corresponding to amino acids 1-244 of human ILK (NP_004508) produced in E.coli.
Formulation:	Lyophilized powder (original buffer 1X PBS, pH 7.3, 8% trehalose)
Reconstitution Method:	For reconstitution, we recommend adding 100uL distilled water to a final antibody concentration of about 1 mg/mL. To use this carrier-free antibody for conjugation experiment, we strongly recommend performing another round of desalting process. (OriGene recommends Zeba Spin Desalting Columns, 7KMWCO from Thermo Scientific)
Purification:	Purified from mouse ascites fluids or tissue culture supernatant by affinity chromatography (protein A/G)
Conjugation:	Unconjugated
Storage:	Store at -20°C as received.
Stability:	Stable for 12 months from date of receipt.
Predicted Protein Size:	51.2 kDa
Gene Name:	integrin linked kinase
Database Link:	NP_004508 Entrez Gene 16202 Mouse Entrez Gene 170922 Rat Entrez Gene 3611 Human Q13418
Synonyms:	HEL-S-28; ILK-1; ILK-2; P59; p59ILK
Protein Families:	Druggable Genome, Protein Kinase



[View online »](#)

Protein Pathways: Endometrial cancer, Focal adhesion, PPAR signaling pathway

Product images:



HEK293T cells were transfected with the pCMV6-ENTRY control (Cat# [PS100001], Left lane) or pCMV6-ENTRY ILK (Cat# [RC201544], Right lane) cDNA for 48 hrs and lysed. Equivalent amounts of cell lysates (5 ug per lane) were separated by SDS-PAGE and immunoblotted with anti-ILK (Cat# [TA804883]). Positive lysates [LY401438] (100ug) and [LC401438] (20ug) can be purchased separately from OriGene.