

Product datasheet for **CF804857**

Ocular development associated gene (GATAD1) Mouse Monoclonal Antibody [Clone ID: OTI2H10]

Product data:

Product Type:	Primary Antibodies
Clone Name:	OTI2H10
Applications:	WB
Recommended Dilution:	WB 1:2000
Reactivity:	Human, Mouse, Rat
Host:	Mouse
Isotype:	IgG1
Clonality:	Monoclonal
Immunogen:	Human recombinant protein fragment corresponding to amino acids 68-269 of human GATAD1 (NP_066990) produced in E.coli.
Formulation:	Lyophilized powder (original buffer 1X PBS, pH 7.3, 8% trehalose)
Reconstitution Method:	For reconstitution, we recommend adding 100uL distilled water to a final antibody concentration of about 1 mg/mL. To use this carrier-free antibody for conjugation experiment, we strongly recommend performing another round of desalting process. (OriGene recommends Zeba Spin Desalting Columns, 7KMWCO from Thermo Scientific)
Purification:	Purified from mouse ascites fluids or tissue culture supernatant by affinity chromatography (protein A/G)
Conjugation:	Unconjugated
Storage:	Store at -20°C as received.
Stability:	Stable for 12 months from date of receipt.
Predicted Protein Size:	28.5 kDa
Gene Name:	GATA zinc finger domain containing 1
Database Link:	NP_066990 Entrez Gene 67210 Mouse Entrez Gene 500005 Rat Entrez Gene 57798 Human Q8WUU5



[View online »](#)

Background:

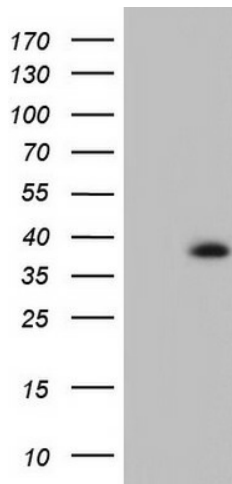
The protein encoded by this gene contains a zinc finger at the N-terminus, and is thought to bind to a histone modification site that regulates gene expression. Mutations in this gene have been associated with autosomal recessive dilated cardiomyopathy. Alternatively spliced transcript variants have been found for this gene. [provided by RefSeq, Jun 2012]

Synonyms:

CMD2B; ODAG; RG083M05.2

Protein Families:

Transcription Factors

Product images:

HEK293T cells were transfected with the pCMV6-ENTRY control (Left lane) or pCMV6-ENTRY GATAD1 ([RC202984], Right lane) cDNA for 48 hrs and lysed. Equivalent amounts of cell lysates (5 ug per lane) were separated by SDS-PAGE and immunoblotted with anti-GATAD1. Positive lysates [LY402849] (100ug) and [LC402849] (20ug) can be purchased separately from OriGene.