

Product datasheet for **CF804823**

ECE1 Mouse Monoclonal Antibody [Clone ID: OTI2B6]

Product data:

Product Type:	Primary Antibodies
Clone Name:	OTI2B6
Applications:	WB
Recommended Dilution:	WB 1:2000
Reactivity:	Human, Mouse, Rat
Host:	Mouse
Isotype:	IgG1
Clonality:	Monoclonal
Immunogen:	Human recombinant protein fragment corresponding to amino acids 486-770 of human ECE1 (NP_001388) produced in E.coli.
Formulation:	Lyophilized powder (original buffer 1X PBS, pH 7.3, 8% trehalose)
Reconstitution Method:	For reconstitution, we recommend adding 100uL distilled water to a final antibody concentration of about 1 mg/mL. To use this carrier-free antibody for conjugation experiment, we strongly recommend performing another round of desalting process. (OriGene recommends Zeba Spin Desalting Columns, 7KMWCO from Thermo Scientific)
Purification:	Purified from mouse ascites fluids or tissue culture supernatant by affinity chromatography (protein A/G)
Conjugation:	Unconjugated
Storage:	Store at -20°C as received.
Stability:	Stable for 12 months from date of receipt.
Predicted Protein Size:	87 kDa
Gene Name:	endothelin converting enzyme 1
Database Link:	NP_001388 Entrez Gene 94204 Rat Entrez Gene 230857 Mouse Entrez Gene 1889 Human P42892



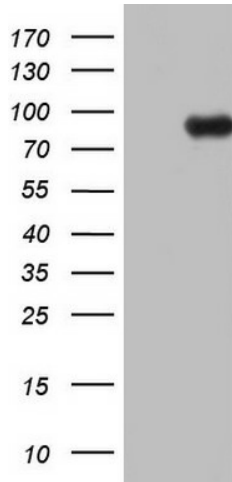
[View online »](#)

Background: The protein encoded by this gene is involved in proteolytic processing of endothelin precursors to biologically active peptides. Mutations in this gene are associated with Hirschsprung disease, cardiac defects and autonomic dysfunction. Alternatively spliced transcript variants encoding different isoforms have been noted for this gene. [provided by RefSeq, Sep

Synonyms: ECE

Protein Families: Druggable Genome, Protease, Transmembrane

Product images:



HEK293T cells were transfected with the pCMV6-ENTRY control (Cat# [PS100001], Left lane) or pCMV6-ENTRY ECE1 (Cat# [RC223135], Right lane) cDNA for 48 hrs and lysed. Equivalent amounts of cell lysates (5 ug per lane) were separated by SDS-PAGE and immunoblotted with anti-ECE1 (Cat# [TA804823]). Positive lysates [LY419958] (100ug) and [LC419958] (20ug) can be purchased separately from OriGene.