

Product datasheet for **CF804799**

PTCH2 Mouse Monoclonal Antibody [Clone ID: OTI8B5]

Product data:

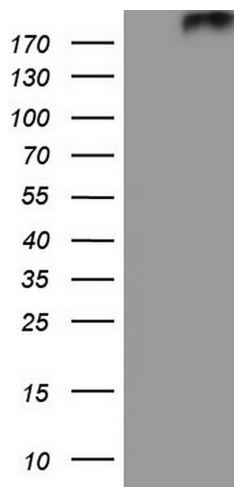
Product Type:	Primary Antibodies
Clone Name:	OTI8B5
Applications:	WB
Recommended Dilution:	WB 1:2000
Reactivity:	Human, Mouse
Host:	Mouse
Isotype:	IgG1
Clonality:	Monoclonal
Immunogen:	Human recombinant protein fragment corresponding to amino acids 79-392 of human PTCH2 (NP_003729) produced in E.coli.
Formulation:	Lyophilized powder (original buffer 1X PBS, pH 7.3, 8% trehalose)
Reconstitution Method:	For reconstitution, we recommend adding 100uL distilled water to a final antibody concentration of about 1 mg/mL. To use this carrier-free antibody for conjugation experiment, we strongly recommend performing another round of desalting process. (OriGene recommends Zeba Spin Desalting Columns, 7KMWCO from Thermo Scientific)
Purification:	Purified from mouse ascites fluids or tissue culture supernatant by affinity chromatography (protein A/G)
Conjugation:	Unconjugated
Storage:	Store at -20°C as received.
Stability:	Stable for 12 months from date of receipt.
Predicted Protein Size:	130.4 kDa
Gene Name:	patched 2
Database Link:	NP_003729 Entrez Gene 19207 Mouse Entrez Gene 8643 Human Q9Y6C5
Synonyms:	PTC2
Protein Families:	Druggable Genome, ES Cell Differentiation/IPS, Transmembrane



[View online »](#)

Protein Pathways: Basal cell carcinoma, Hedgehog signaling pathway, Pathways in cancer

Product images:



HEK293T cells were transfected with the pCMV6-ENTRY control (Left lane) or pCMV6-ENTRY PTCH2 ([RC224642], Right lane) cDNA for 48 hrs and lysed. Equivalent amounts of cell lysates (5 ug per lane) were separated by SDS-PAGE and immunoblotted with anti-PTCH2. Positive lysates [LY418463] (100ug) and [LC418463] (20ug) can be purchased separately from OriGene.