

Product datasheet for **CF804766**

RSPO1 Mouse Monoclonal Antibody [Clone ID: OT1C3]

Product data:

Product Type:	Primary Antibodies
Clone Name:	OT1C3
Applications:	IHC, WB
Recommended Dilution:	WB 1:2000, IHC 1:150
Reactivity:	Human, Mouse, Rat
Host:	Mouse
Isotype:	IgG1
Clonality:	Monoclonal
Immunogen:	Human recombinant protein fragment corresponding to amino acids 21-263 of human RSPO1 (NP_001033722) produced in E.coli.
Formulation:	Lyophilized powder (original buffer 1X PBS, pH 7.3, 8% trehalose)
Reconstitution Method:	For reconstitution, we recommend adding 100uL distilled water to a final antibody concentration of about 1 mg/mL. To use this carrier-free antibody for conjugation experiment, we strongly recommend performing another round of desalting process. (OriGene recommends Zeba Spin Desalting Columns, 7KMWCO from Thermo Scientific)
Purification:	Purified from mouse ascites fluids or tissue culture supernatant by affinity chromatography (protein A/G)
Conjugation:	Unconjugated
Storage:	Store at -20°C as received.
Stability:	Stable for 12 months from date of receipt.
Predicted Protein Size:	28.8 kDa
Gene Name:	R-spondin 1
Database Link:	NP_001033722 Entrez Gene 192199 MouseEntrez Gene 313589 RatEntrez Gene 284654 Human Q2MKA7



[View online »](#)

Background:

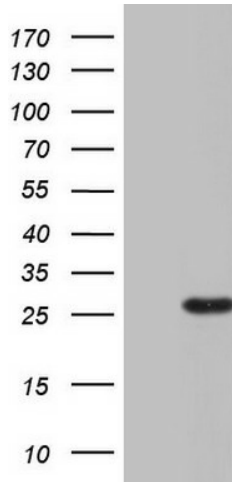
This gene is a member of the R-spondin family and encodes a secreted activator protein with two cystein-rich, furin-like domains and one thrombospondin type 1 domain. In mice, the protein induces the rapid onset of crypt cell proliferation and increases intestinal epithelial healing, providing a protective effect against chemotherapy-induced adverse effects. [provided by RefSeq, Jul 2008]

Synonyms:

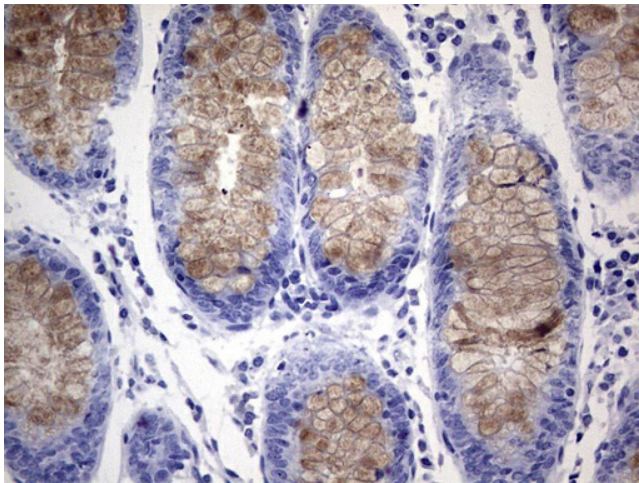
CRISTIN3; RSPO

Protein Families:

Secreted Protein

Product images:


HEK293T cells were transfected with the pCMV6-ENTRY control (Left lane) or pCMV6-ENTRY RSPO1 ([RC217921], Right lane) cDNA for 48 hrs and lysed. Equivalent amounts of cell lysates (5 ug per lane) were separated by SDS-PAGE and immunoblotted with anti-RSPO1. Positive lysates [LY422005] (100ug) and [LC422005] (20ug) can be purchased separately from OriGene.



Immunohistochemical staining of paraffin-embedded Human colon tissue within the normal limits using anti-RSPO1 mouse monoclonal antibody. (Heat-induced epitope retrieval by 1mM EDTA in 10mM Tris, pH8.5, 120°C for 3min, [TA804766])