

Product datasheet for **CF804723**

RRM1 Mouse Monoclonal Antibody [Clone ID: OTI17C3]

Product data:

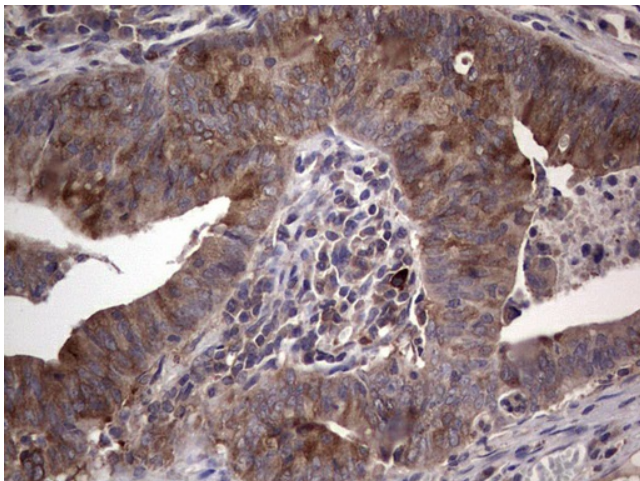
Product Type:	Primary Antibodies
Clone Name:	OTI17C3
Applications:	IHC
Recommended Dilution:	IHC 1:150
Reactivity:	Human, Mouse, Rat
Host:	Mouse
Isotype:	IgG1
Clonality:	Monoclonal
Immunogen:	Human recombinant protein fragment corresponding to amino acids 541-792 of human RRM1 (NP_001024) produced in E.coli.
Formulation:	Lyophilized powder (original buffer 1X PBS, pH 7.3, 8% trehalose)
Reconstitution Method:	For reconstitution, we recommend adding 100uL distilled water to a final antibody concentration of about 1 mg/mL. To use this carrier-free antibody for conjugation experiment, we strongly recommend performing another round of desalting process. (OriGene recommends Zeba Spin Desalting Columns, 7KMWCO from Thermo Scientific)
Purification:	Purified from mouse ascites fluids or tissue culture supernatant by affinity chromatography (protein A/G)
Conjugation:	Unconjugated
Storage:	Store at -20°C as received.
Stability:	Stable for 12 months from date of receipt.
Predicted Protein Size:	89.9 kDa
Gene Name:	ribonucleotide reductase catalytic subunit M1
Database Link:	NP_001024 Entrez Gene 20133 Mouse Entrez Gene 685579 Rat Entrez Gene 6240 Human P23921
Synonyms:	R1; RIR1; RR1
Protein Families:	Druggable Genome



[View online »](#)

Protein Pathways: Glutathione metabolism, Metabolic pathways, Purine metabolism, Pyrimidine metabolism

Product images:



Immunohistochemical staining of paraffin-embedded Adenocarcinoma of Human colon tissue using anti-RRM1 mouse monoclonal antibody. Heat-induced epitope retrieval by EDTA solution buffer pH 8.0 at 120°C for 3 min.