

Product datasheet for **CF804559**

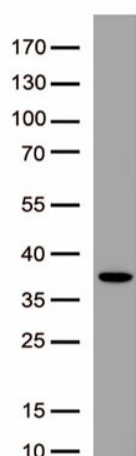
CD39 (ENTPD1) Mouse Monoclonal Antibody [Clone ID: OTI2B10]

Product data:

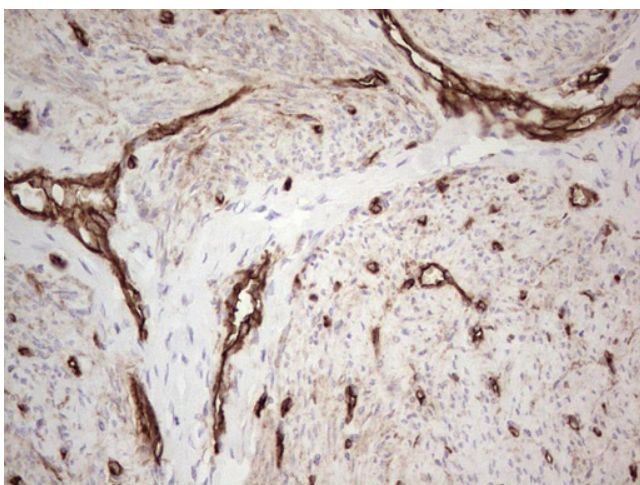
Product Type:	Primary Antibodies
Clone Name:	OTI2B10
Applications:	IHC, WB
Recommended Dilution:	WB 1:2000, IHC 1:150
Reactivity:	Human
Host:	Mouse
Isotype:	IgG1
Clonality:	Monoclonal
Immunogen:	Human recombinant protein fragment corresponding to amino acids 38-307 of human ENTPD1 (NP_001767) produced in E.coli.
Formulation:	Lyophilized powder (original buffer 1X PBS, pH 7.3, 8% trehalose)
Reconstitution Method:	For reconstitution, we recommend adding 100uL distilled water to a final antibody concentration of about 1 mg/mL. To use this carrier-free antibody for conjugation experiment, we strongly recommend performing another round of desalting process. (OriGene recommends Zeba Spin Desalting Columns, 7KMWCO from Thermo Scientific)
Purification:	Purified from mouse ascites fluids or tissue culture supernatant by affinity chromatography (protein A/G)
Conjugation:	Unconjugated
Storage:	Store at -20°C as received.
Stability:	Stable for 12 months from date of receipt.
Gene Name:	ectonucleoside triphosphate diphosphohydrolase 1
Database Link:	NP_001767 Entrez Gene 953 Human P49961
Synonyms:	ATPDase; CD39; NTPDase-1; SPG64
Protein Families:	Transmembrane
Protein Pathways:	Purine metabolism, Pyrimidine metabolism



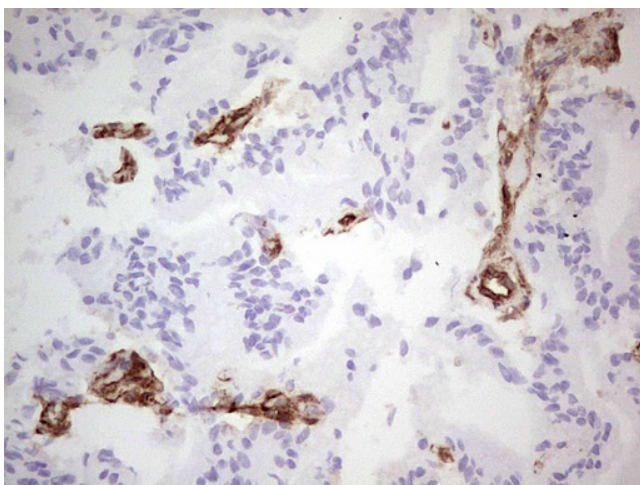
[View online »](#)

Product images:

Western blot analysis of recombinant ENTPD1 protein (0.05ug) by using ENTPD1 Mouse Monoclonal Antibody ([TA804559]).



Immunohistochemical staining of paraffin-embedded Adenocarcinoma of Human endometrium tissue using anti-ENTPD1 mouse monoclonal antibody. (Heat-induced epitope retrieval by 1mM EDTA in 10mM Tris, pH8.5, 120°C for 3min, [TA804559])



Immunohistochemical staining of paraffin-embedded Carcinoma of Human prostate tissue using anti-ENTPD1 mouse monoclonal antibody. (Heat-induced epitope retrieval by 1mM EDTA in 10mM Tris, pH8.5, 120°C for 3min, [TA804559])