

## Product datasheet for **CF804538**

### CD38 Mouse Monoclonal Antibody [Clone ID: OT11C9]

#### Product data:

Product Type:	Primary Antibodies
Clone Name:	OT11C9
Applications:	IHC, WB
Recommended Dilution:	WB 1:2000, IHC 1:150
Reactivity:	Human
Host:	Mouse
Isotype:	IgG1
Clonality:	Monoclonal
Immunogen:	Human recombinant protein fragment corresponding to amino acids 43-300 of human CD38 (NP_001766) produced in E.coli.
Formulation:	Lyophilized powder (original buffer 1X PBS, pH 7.3, 8% trehalose)
Reconstitution Method:	For reconstitution, we recommend adding 100uL distilled water to a final antibody concentration of about 1 mg/mL. To use this carrier-free antibody for conjugation experiment, we strongly recommend performing another round of desalting process. (OriGene recommends Zeba Spin Desalting Columns, 7KMWCO from Thermo Scientific)
Purification:	Purified from mouse ascites fluids or tissue culture supernatant by affinity chromatography (protein A/G)
Conjugation:	Unconjugated
Storage:	Store at -20°C as received.
Stability:	Stable for 12 months from date of receipt.
Gene Name:	CD38 molecule
Database Link:	<a href="#">NP_001766</a> <a href="#">Entrez Gene 952 Human P28907</a>
Background:	CD38 is a novel multifunctional ectoenzyme widely expressed in cells and tissues especially in leukocytes. CD38 also functions in cell adhesion, signal transduction and calcium signaling. [provided by RefSeq, Jul 2008]
Synonyms:	ADPRC 1; T10

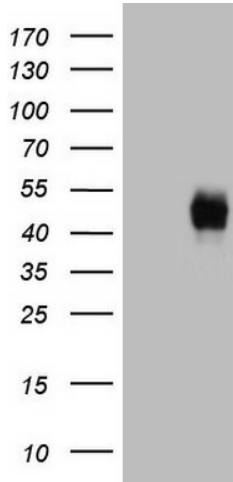


[View online »](#)

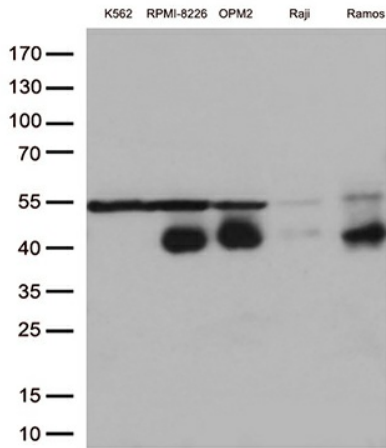
**Protein Families:** Cancer stem cells, Druggable Genome, ES Cell Differentiation/IPS, Induced pluripotent stem cells, Transmembrane

**Protein Pathways:** Calcium signaling pathway, Hematopoietic cell lineage, Metabolic pathways, Nicotinate and nicotinamide metabolism

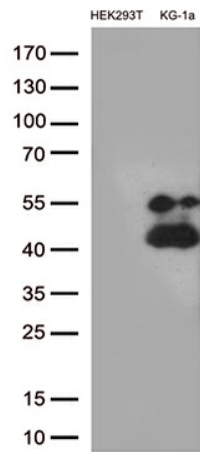
**Product images:**



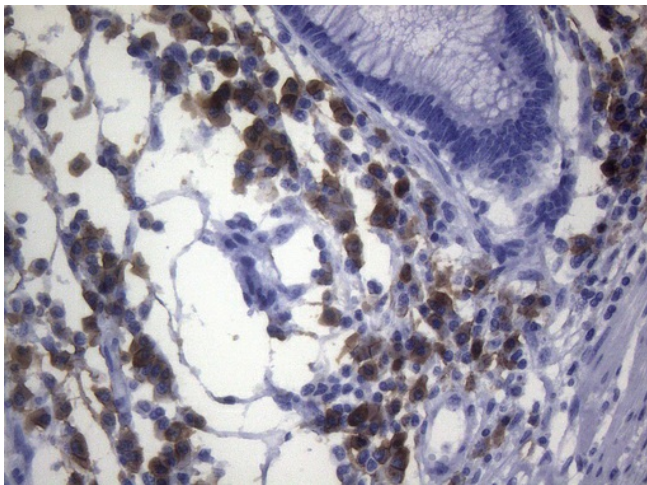
HEK293T cells were transfected with the pCMV6-ENTRY control (Cat# [PS100001], Left lane) or pCMV6-ENTRY CD38 (Cat# [RC203179], Right lane) cDNA for 48 hrs and lysed. Equivalent amounts of cell lysates (5 ug per lane) were separated by SDS-PAGE and immunoblotted with anti-CD38 (Cat# [TA804538])(1:2000). Positive lysates [LY419752] (100ug) and [LC419752] (20ug) can be purchased separately from OriGene.



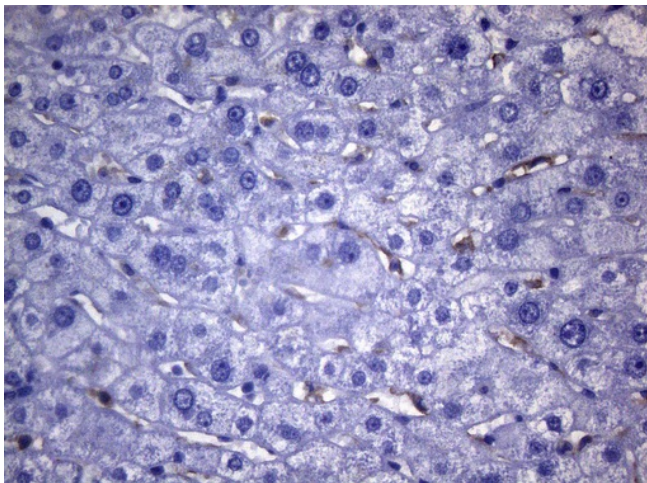
Western blot analysis of extracts (35ug) from 5 cell lines lysates by using anti-CD38 monoclonal antibody (1:500).



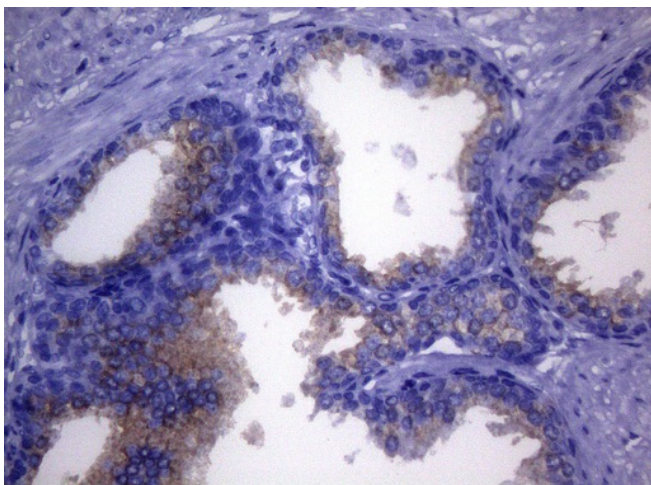
Western blot analysis of extracts (35ug) from 2 cell lines lysates by using anti-CD38 monoclonal antibody (1:500).



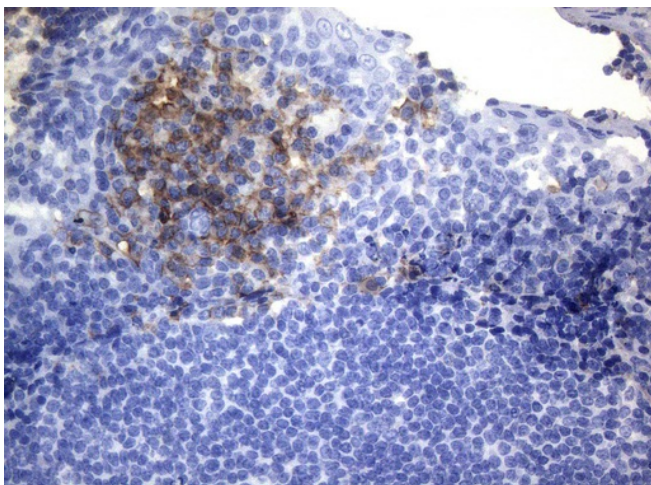
Immunohistochemical staining of paraffin-embedded Adenocarcinoma of Human colon tissue using anti-CD38 mouse monoclonal antibody. Heat-induced epitope retrieval by EDTA solution buffer pH 8.0 at 120°C for 3 min.



Immunohistochemical staining of paraffin-embedded Human liver tissue within the normal limits using anti-CD38 mouse monoclonal antibody. Heat-induced epitope retrieval by EDTA solution buffer pH 8.0 at 120°C for 3 min.



Immunohistochemical staining of paraffin-embedded Human prostate tissue within the normal limits using anti-CD38 mouse monoclonal antibody. Heat-induced epitope retrieval by EDTA solution buffer pH 8.0 at 120°C for 3 min.



Immunohistochemical staining of paraffin-embedded Human tonsil within the normal limits using anti-CD38 mouse monoclonal antibody. Heat-induced epitope retrieval by EDTA solution buffer pH 8.0 at 120°C for 3 min.