

## Product datasheet for **CF804454**

### RRM1 Mouse Monoclonal Antibody [Clone ID: OTI1F9]

#### Product data:

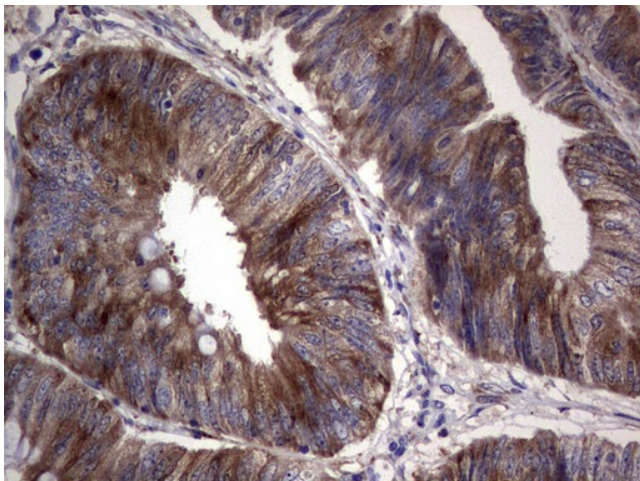
Product Type:	Primary Antibodies
Clone Name:	OTI1F9
Applications:	IHC
Recommended Dilution:	IHC 1:150
Reactivity:	Human, Mouse, Rat
Host:	Mouse
Isotype:	IgG1
Clonality:	Monoclonal
Immunogen:	Human recombinant protein fragment corresponding to amino acids 541-792 of human RRM1 (NP_001024) produced in E.coli.
Formulation:	Lyophilized powder (original buffer 1X PBS, pH 7.3, 8% trehalose)
Reconstitution Method:	For reconstitution, we recommend adding 100uL distilled water to a final antibody concentration of about 1 mg/mL. To use this carrier-free antibody for conjugation experiment, we strongly recommend performing another round of desalting process. (OriGene recommends Zeba Spin Desalting Columns, 7KMWCO from Thermo Scientific)
Purification:	Purified from mouse ascites fluids or tissue culture supernatant by affinity chromatography (protein A/G)
Conjugation:	Unconjugated
Storage:	Store at -20°C as received.
Stability:	Stable for 12 months from date of receipt.
Predicted Protein Size:	89.9 kDa
Gene Name:	ribonucleotide reductase catalytic subunit M1
Database Link:	<a href="#">NP_001024</a> <a href="#">Entrez Gene 20133 Mouse</a> <a href="#">Entrez Gene 685579 Rat</a> <a href="#">Entrez Gene 6240 Human</a> <a href="#">P23921</a>
Synonyms:	R1; RIR1; RR1
Protein Families:	Druggable Genome



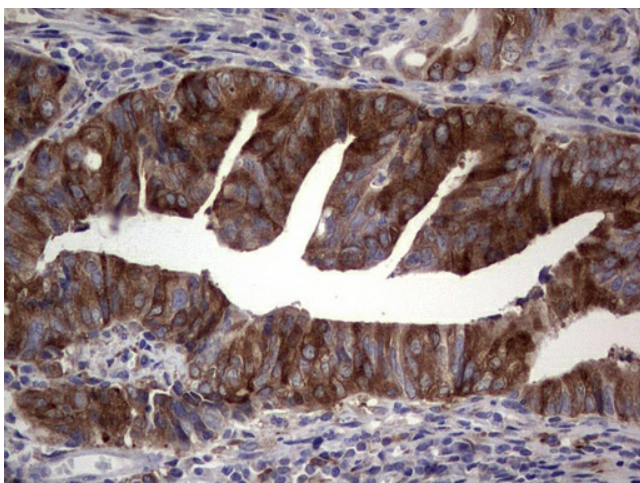
[View online »](#)

Protein Pathways: Glutathione metabolism, Metabolic pathways, Purine metabolism, Pyrimidine metabolism

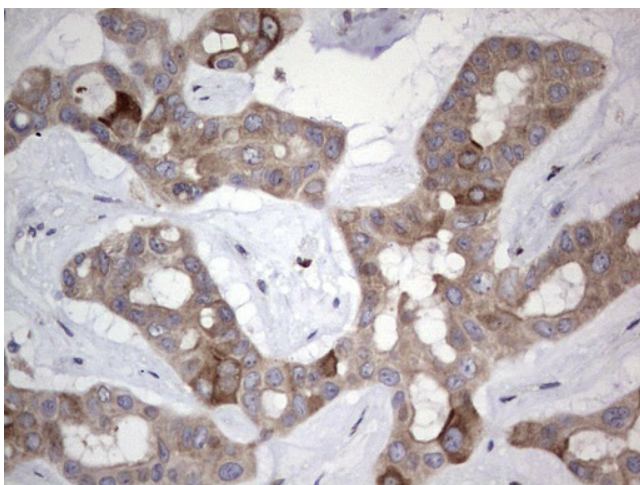
### Product images:



Immunohistochemical staining of paraffin-embedded Human colon tissue within the normal limits using anti-RRM1 mouse monoclonal antibody. (Heat-induced epitope retrieval by 1mM EDTA in 10mM Tris, pH8.5, 120°C for 3min, [TA804454])



Immunohistochemical staining of paraffin-embedded Adenocarcinoma of Human colon tissue using anti-RRM1 mouse monoclonal antibody. (Heat-induced epitope retrieval by 1mM EDTA in 10mM Tris, pH8.5, 120°C for 3min, [TA804454])



Immunohistochemical staining of paraffin-embedded Carcinoma of Human liver tissue using anti-RRM1 mouse monoclonal antibody. (Heat-induced epitope retrieval by 1mM EDTA in 10mM Tris, pH8.5, 120°C for 3min, [TA804454])