

Product datasheet for **CF804390**

Eotaxin (CCL11) Mouse Monoclonal Antibody [Clone ID: OTI2H9]

Product data:

Product Type:	Primary Antibodies
Clone Name:	OTI2H9
Applications:	WB
Recommended Dilution:	WB 1:2000
Reactivity:	Human
Host:	Mouse
Isotype:	IgG1
Clonality:	Monoclonal
Immunogen:	Human recombinant protein fragment corresponding to amino acids 24-97 of human CCL11 (NP_002977) produced in E.coli.
Formulation:	Lyophilized powder (original buffer 1X PBS, pH 7.3, 8% trehalose)
Reconstitution Method:	For reconstitution, we recommend adding 100uL distilled water to a final antibody concentration of about 1 mg/mL. To use this carrier-free antibody for conjugation experiment, we strongly recommend performing another round of desalting process. (OriGene recommends Zeba Spin Desalting Columns, 7KMWCO from Thermo Scientific)
Purification:	Purified from mouse ascites fluids or tissue culture supernatant by affinity chromatography (protein A/G)
Conjugation:	Unconjugated
Storage:	Store at -20°C as received.
Stability:	Stable for 12 months from date of receipt.
Predicted Protein Size:	8.3 kDa
Gene Name:	C-C motif chemokine ligand 11
Database Link:	NP_002977 Entrez Gene 6356 Human P51671

[View online »](#)

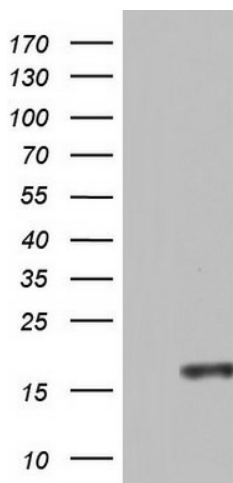
Background: This gene is one of several chemokine genes clustered on the q-arm of chromosome 17. Chemokines form a superfamily of secreted proteins involved in immunoregulatory and inflammatory processes. The superfamily is divided into four subfamilies based on the arrangement of the N-terminal cysteine residues of the mature peptide. This chemokine, a member of the CC subfamily, displays chemotactic activity for eosinophils, but not mononuclear cells or neutrophils. This eosinophil-specific chemokine is thought to be involved in eosinophilic inflammatory diseases such as atopic dermatitis, allergic rhinitis, asthma and parasitic infections. [provided by RefSeq, Jul 2013]

Synonyms: SCYA11

Protein Families: Druggable Genome, Secreted Protein, Transmembrane

Protein Pathways: Asthma, Chemokine signaling pathway, Cytokine-cytokine receptor interaction, NOD-like receptor signaling pathway

Product images:



HEK293T cells were transfected with the pCMV6-ENTRY control (Cat# [PS100001], Left lane) or pCMV6-ENTRY CCL11 (Cat# [RC204726], Right lane) cDNA for 48 hrs and lysed. Equivalent amounts of cell lysates (5 ug per lane) were separated by SDS-PAGE and immunoblotted with anti-CCL11 (Cat# [TA804390]). Positive lysates [LY401045] (100ug) and [LC401045] (20ug) can be purchased separately from OriGene.