

## Product datasheet for **CF804320**

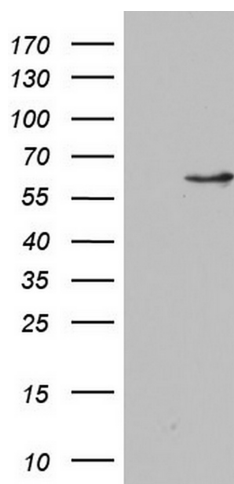
### APPBP1 (NAE1) Mouse Monoclonal Antibody [Clone ID: OTI1D12]

#### Product data:

Product Type:	Primary Antibodies
Clone Name:	OTI1D12
Applications:	WB
Recommended Dilution:	WB 1:2000
Reactivity:	Human, Mouse, Rat
Host:	Mouse
Isotype:	IgG2b
Clonality:	Monoclonal
Immunogen:	Human recombinant protein fragment corresponding to amino acids 1-274 of human NAE1 (NP_001018170) produced in E.coli.
Formulation:	Lyophilized powder (original buffer 1X PBS, pH 7.3, 8% trehalose)
Reconstitution Method:	For reconstitution, we recommend adding 100uL distilled water to a final antibody concentration of about 1 mg/mL. To use this carrier-free antibody for conjugation experiment, we strongly recommend performing another round of desalting process. (OriGene recommends Zeba Spin Desalting Columns, 7KMWCO from Thermo Scientific)
Purification:	Purified from mouse ascites fluids or tissue culture supernatant by affinity chromatography (protein A/G)
Conjugation:	Unconjugated
Storage:	Store at -20°C as received.
Stability:	Stable for 12 months from date of receipt.
Predicted Protein Size:	50.4 kDa
Gene Name:	NEDD8 activating enzyme E1 subunit 1
Database Link:	<a href="#">NP_001018170</a> <a href="#">Entrez Gene 84019 Rat</a> <a href="#">Entrez Gene 234664 Mouse</a> <a href="#">Entrez Gene 8883 Human</a> <a href="#">Q13564</a>
Synonyms:	A-116A10.1; APPBP1; HPP1; ula-1
Protein Pathways:	Alzheimer's disease



[View online »](#)

**Product images:**

HEK293T cells were transfected with the pCMV6-ENTRY control (Left lane) or pCMV6-ENTRY NAE1 ([RC201326], Right lane) cDNA for 48 hrs and lysed. Equivalent amounts of cell lysates (5 ug per lane) were separated by SDS-PAGE and immunoblotted with anti-NAE1. Positive lysates [LY422668] (100ug) and [LC422668] (20ug) can be purchased separately from OriGene.