

Product datasheet for **CF804268**

SETD2 Mouse Monoclonal Antibody [Clone ID: OTI3G8]

Product data:

Product Type:	Primary Antibodies
Clone Name:	OTI3G8
Applications:	WB
Recommended Dilution:	WB 1:200
Reactivity:	Human, Mouse, Rat
Host:	Mouse
Isotype:	IgG1
Clonality:	Monoclonal
Immunogen:	Human recombinant protein fragment corresponding to amino acids 1787-2144 of human SETD2 (NP_054878) produced in E.coli.
Formulation:	Lyophilized powder (original buffer 1X PBS, pH 7.3, 8% trehalose)
Reconstitution Method:	For reconstitution, we recommend adding 100uL distilled water to a final antibody concentration of about 1 mg/mL. To use this carrier-free antibody for conjugation experiment, we strongly recommend performing another round of desalting process. (OriGene recommends Zeba Spin Desalting Columns, 7KMWCO from Thermo Scientific)
Purification:	Purified from mouse ascites fluids or tissue culture supernatant by affinity chromatography (protein A/G)
Conjugation:	Unconjugated
Storage:	Store at -20°C as received.
Stability:	Stable for 12 months from date of receipt.
Gene Name:	SET domain containing 2, histone lysine methyltransferase
Database Link:	NP_054878 Entrez Gene 235626 Mouse Entrez Gene 316013 Rat Entrez Gene 29072 Human Q9BYW2



[View online »](#)

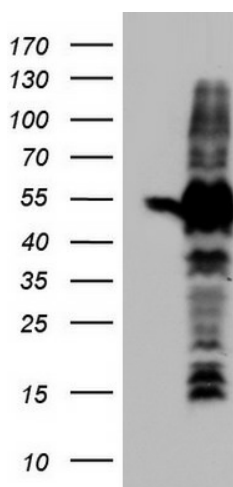
Background: Huntington's disease (HD), a neurodegenerative disorder characterized by loss of striatal neurons, is caused by an expansion of a polyglutamine tract in the HD protein huntingtin. This gene encodes a protein belonging to a class of huntingtin interacting proteins characterized by WW motifs. This protein is a histone methyltransferase that is specific for lysine-36 of histone H3, and methylation of this residue is associated with active chromatin. This protein also contains a novel transcriptional activation domain and has been found associated with hyperphosphorylated RNA polymerase II. [provided by RefSeq, Aug

Synonyms: HBP231; HIF-1; HIP-1; HSPC069; HYPB; KMT3A; LLS; p231HBP; SET2

Protein Families: Druggable Genome

Protein Pathways: Lysine degradation

Product images:



Human recombinant protein fragment corresponding to amino acids 1787-2144 of human SETD2 (NP_054878) produced in E.coli (1:200).