

## Product datasheet for **CF804213**

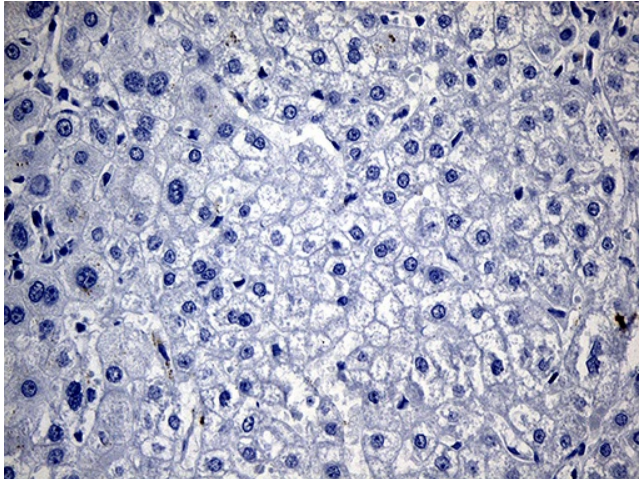
### Thyroglobulin (TG) Mouse Monoclonal Antibody [Clone ID: OTI8E1]

#### Product data:

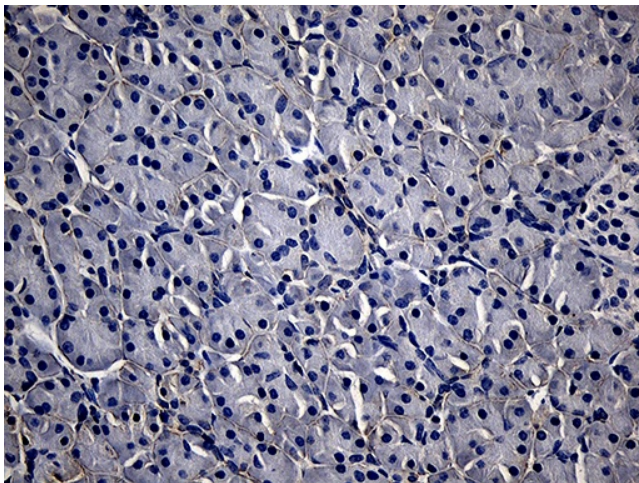
Product Type:	Primary Antibodies
Clone Name:	OTI8E1
Applications:	IHC
Recommended Dilution:	IHC 1:2000
Reactivity:	Human
Host:	Mouse
Isotype:	IgG1
Clonality:	Monoclonal
Immunogen:	Human recombinant protein fragment corresponding to amino acids 20-358 of human TG (NP_003226) produced in E.coli.
Formulation:	Lyophilized powder (original buffer 1X PBS, pH 7.3, 8% trehalose)
Reconstitution Method:	For reconstitution, we recommend adding 100uL distilled water to a final antibody concentration of about 1 mg/mL. To use this carrier-free antibody for conjugation experiment, we strongly recommend performing another round of desalting process. (OriGene recommends Zeba Spin Desalting Columns, 7KMWCO from Thermo Scientific)
Purification:	Purified from mouse ascites fluids or tissue culture supernatant by affinity chromatography (protein A/G)
Conjugation:	Unconjugated
Storage:	Store at -20°C as received.
Stability:	Stable for 12 months from date of receipt.
Gene Name:	thyroglobulin
Database Link:	<a href="#">NP_003226</a> <a href="#">Entrez Gene 7038 Human P01266</a>
Synonyms:	AITD3; TGN
Protein Families:	Druggable Genome
Protein Pathways:	Autoimmune thyroid disease



[View online »](#)

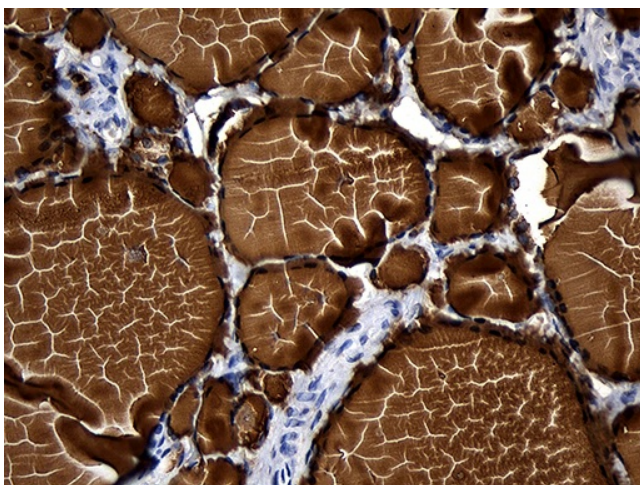
**Product images:**

Immunohistochemical staining of paraffin-embedded Human liver tissue within the normal limits using anti-TG mouse monoclonal antibody. This figure shows negative staining. (Heat-induced epitope retrieval by 1mM EDTA in 10mM Tris buffer (pH8.5) at 120°C for 3min, [TA804213]) (1:2000)

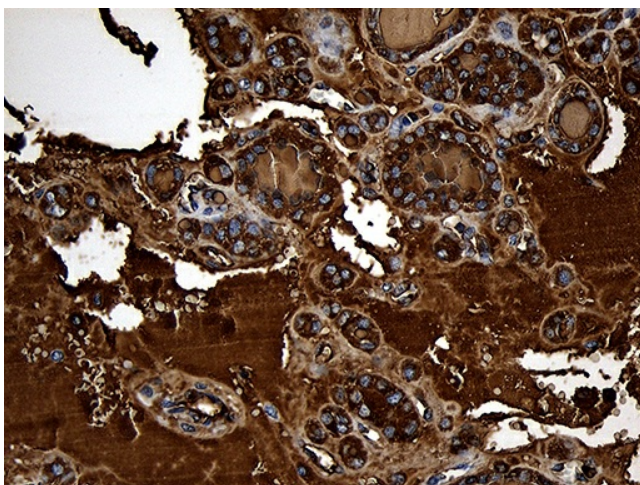


Immunohistochemical staining of paraffin-embedded Human pancreas tissue within the normal limits using anti-TG mouse monoclonal antibody. This figure shows weak or negative staining. (Heat-induced epitope retrieval by 1mM EDTA in 10mM Tris buffer (pH8.5) at 120°C for 3min, [TA804213]) (1:2000)

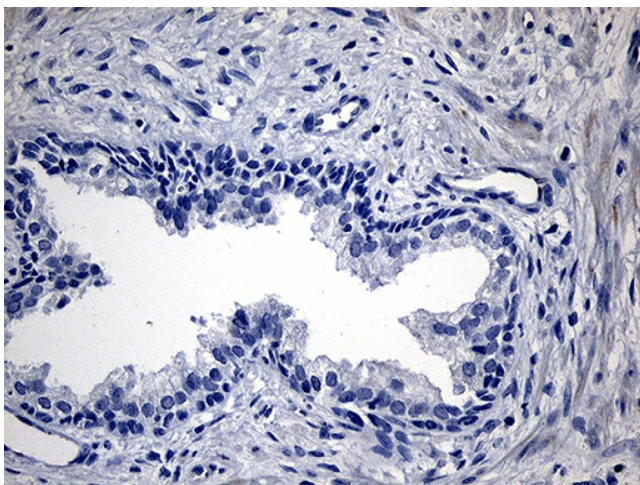




Immunohistochemical staining of paraffin-embedded Human thyroid tissue within the normal limits using anti-TG mouse monoclonal antibody. (Heat-induced epitope retrieval by 1mM EDTA in 10mM Tris buffer (pH8.5) at 120°C for 3min, [TA804213]) (1:2000)



Immunohistochemical staining of paraffin-embedded Carcinoma of Human thyroid tissue using anti-TG mouse monoclonal antibody. (Heat-induced epitope retrieval by 1mM EDTA in 10mM Tris buffer (pH8.5) at 120°C for 3min, [TA804213]) (1:2000)



Immunohistochemical staining of paraffin-embedded Human prostate tissue within the normal limits using anti-TG mouse monoclonal antibody. This figure shows negative staining. (Heat-induced epitope retrieval by 1mM EDTA in 10mM Tris buffer (pH8.5) at 120°C for 3min, [TA804213]) (1:2000)