

Product datasheet for **CF804204**

N4BP2L2 Mouse Monoclonal Antibody [Clone ID: OTI3F12]

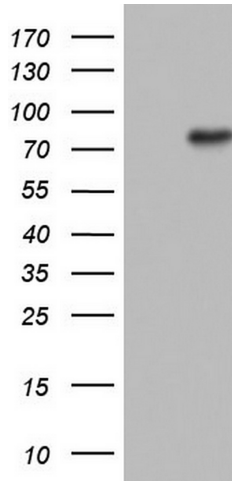
Product data:

Product Type:	Primary Antibodies
Clone Name:	OTI3F12
Applications:	WB
Recommended Dilution:	WB 1:2000
Reactivity:	Human
Host:	Mouse
Isotype:	IgG2a
Clonality:	Monoclonal
Immunogen:	Full length human recombinant protein of human N4BP2L2 (NP_055702) produced in E.coli.
Formulation:	Lyophilized powder (original buffer 1X PBS, pH 7.3, 8% trehalose)
Reconstitution Method:	For reconstitution, we recommend adding 100uL distilled water to a final antibody concentration of about 1 mg/mL. To use this carrier-free antibody for conjugation experiment, we strongly recommend performing another round of desalting process. (OriGene recommends Zeba Spin Desalting Columns, 7KMWCO from Thermo Scientific)
Purification:	Purified from mouse ascites fluids or tissue culture supernatant by affinity chromatography (protein A/G)
Conjugation:	Unconjugated
Storage:	Store at -20°C as received.
Stability:	Stable for 12 months from date of receipt.
Predicted Protein Size:	67.3 kDa
Gene Name:	NEDD4 binding protein 2 like 2
Database Link:	NP_055702 Entrez Gene 10443 Human Q92802
Synonyms:	92M18.3; CG005; CG016; PFAAP5



[View online »](#)

Product images:



HEK293T cells were transfected with the pCMV6-ENTRY control (Left lane) or pCMV6-ENTRY N4BP2L2 ([RC202210], Right lane) cDNA for 48 hrs and lysed. Equivalent amounts of cell lysates (5 ug per lane) were separated by SDS-PAGE and immunoblotted with anti-N4BP2L2. Positive lysates [LY414958] (100ug) and [LC414958] (20ug) can be purchased separately from OriGene.