

## Product datasheet for **CF804197**

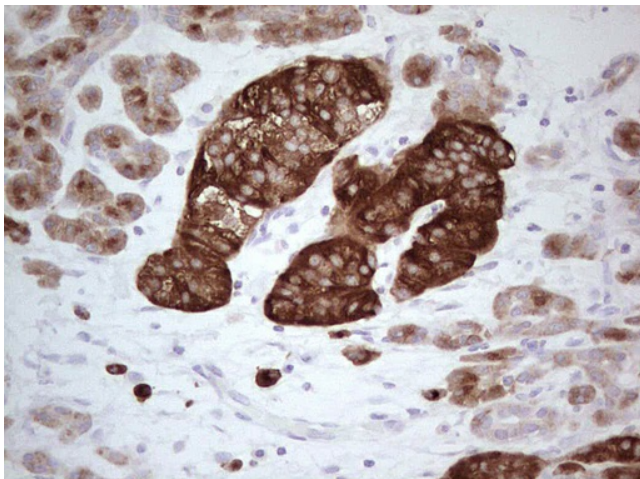
### **N4BP2L2 Mouse Monoclonal Antibody [Clone ID: OTI6A9]**

#### **Product data:**

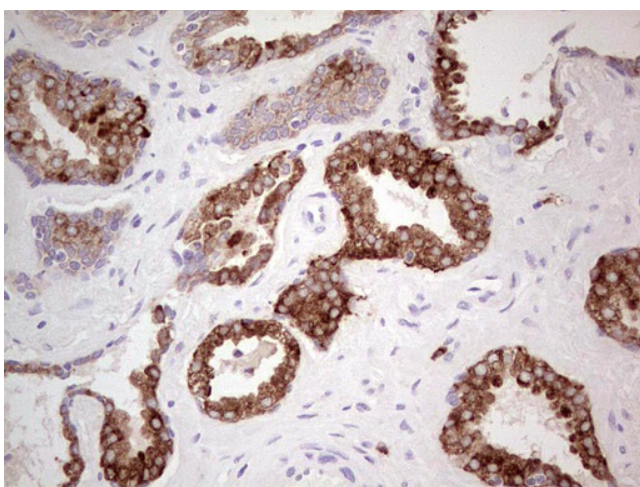
<b>Product Type:</b>	Primary Antibodies
<b>Clone Name:</b>	OTI6A9
<b>Applications:</b>	IHC
<b>Recommended Dilution:</b>	IHC 1:150
<b>Reactivity:</b>	Human
<b>Host:</b>	Mouse
<b>Isotype:</b>	IgG1
<b>Clonality:</b>	Monoclonal
<b>Immunogen:</b>	Full length human recombinant protein of human N4BP2L2 (NP_055702) produced in E.coli.
<b>Formulation:</b>	Lyophilized powder (original buffer 1X PBS, pH 7.3, 8% trehalose)
<b>Reconstitution Method:</b>	For reconstitution, we recommend adding 100uL distilled water to a final antibody concentration of about 1 mg/mL. To use this carrier-free antibody for conjugation experiment, we strongly recommend performing another round of desalting process. (OriGene recommends Zeba Spin Desalting Columns, 7KMWCO from Thermo Scientific)
<b>Purification:</b>	Purified from mouse ascites fluids or tissue culture supernatant by affinity chromatography (protein A/G)
<b>Conjugation:</b>	Unconjugated
<b>Storage:</b>	Store at -20°C as received.
<b>Stability:</b>	Stable for 12 months from date of receipt.
<b>Predicted Protein Size:</b>	67.3 kDa
<b>Gene Name:</b>	NEDD4 binding protein 2 like 2
<b>Database Link:</b>	<a href="#">NP_055702</a> <a href="#">Entrez Gene 10443 Human Q92802</a>
<b>Synonyms:</b>	92M18.3; CG005; CG016; PFAAP5



[View online »](#)

**Product images:**

Immunohistochemical staining of paraffin-embedded Carcinoma of Human pancreas tissue using anti-N4BP2L2 mouse monoclonal antibody. Heat-induced epitope retrieval by EDTA solution buffer pH 8.0 at 120°C for 3 min.



Immunohistochemical staining of paraffin-embedded Carcinoma of Human prostate tissue using anti-N4BP2L2 mouse monoclonal antibody. Heat-induced epitope retrieval by EDTA solution buffer pH 8.0 at 120°C for 3 min.