

Product datasheet for **CF804132**

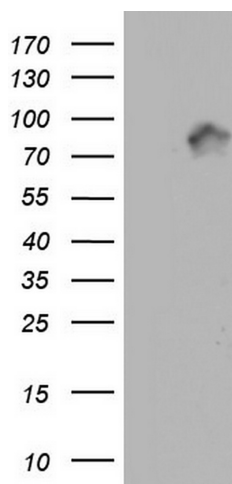
LYRIC (MTDH) Mouse Monoclonal Antibody [Clone ID: OTI2A6]

Product data:

Product Type:	Primary Antibodies
Clone Name:	OTI2A6
Applications:	WB
Recommended Dilution:	WB 1:2000
Reactivity:	Human, Mouse, Rat
Host:	Mouse
Isotype:	IgG2a
Clonality:	Monoclonal
Immunogen:	Human recombinant protein fragment corresponding to amino acids 70-582 of human MTDH (NP_848927) produced in SF9 cell.
Formulation:	Lyophilized powder (original buffer 1X PBS, pH 7.3, 8% trehalose)
Reconstitution Method:	For reconstitution, we recommend adding 100uL distilled water to a final antibody concentration of about 1 mg/mL. To use this carrier-free antibody for conjugation experiment, we strongly recommend performing another round of desalting process. (OriGene recommends Zeba Spin Desalting Columns, 7KMWCO from Thermo Scientific)
Purification:	Purified from mouse ascites fluids or tissue culture supernatant by affinity chromatography (protein A/G)
Conjugation:	Unconjugated
Storage:	Store at -20°C as received.
Stability:	Stable for 12 months from date of receipt.
Predicted Protein Size:	63.7 kDa
Gene Name:	metadherin
Database Link:	NP_848927 Entrez Gene 67154 Mouse Entrez Gene 170910 Rat Entrez Gene 92140 Human Q86UE4
Synonyms:	3D3; AEG-1; AEG1; LYRIC; LYRIC/3D3
Protein Families:	Transmembrane



[View online »](#)

Product images:

HEK293T cells were transfected with the pCMV6-ENTRY control (Left lane) or pCMV6-ENTRY MTDH ([RC207238], Right lane) cDNA for 48 hrs and lysed. Equivalent amounts of cell lysates (5 ug per lane) were separated by SDS-PAGE and immunoblotted with anti-MTDH. Positive lysates [LY403614] (100ug) and [LC403614] (20ug) can be purchased separately from OriGene.