

Product datasheet for **CF804120**

L Kynurenine Hydrolase (KYNU) Mouse Monoclonal Antibody [Clone ID: OT11F1]

Product data:

Product Type:	Primary Antibodies
Clone Name:	OT11F1
Applications:	IHC, WB
Recommended Dilution:	WB 1:2000
Reactivity:	Human, Rat
Host:	Mouse
Isotype:	IgG2b
Clonality:	Monoclonal
Immunogen:	Human recombinant protein fragment corresponding to amino acids 1-216 of human KYNU (NP_001028170) produced in E.coli.
Formulation:	Lyophilized powder (original buffer 1X PBS, pH 7.3, 8% trehalose)
Reconstitution Method:	For reconstitution, we recommend adding 100uL distilled water to a final antibody concentration of about 1 mg/mL. To use this carrier-free antibody for conjugation experiment, we strongly recommend performing another round of desalting process. (OriGene recommends Zeba Spin Desalting Columns, 7KMWCO from Thermo Scientific)
Purification:	Purified from mouse ascites fluids or tissue culture supernatant by affinity chromatography (protein A/G)
Conjugation:	Unconjugated
Storage:	Store at -20°C as received.
Stability:	Stable for 12 months from date of receipt.
Gene Name:	Homo sapiens kynureninase (KYNU), transcript variant 2, mRNA.
Database Link:	NP_001028170 Entrez Gene 116682 Rat Entrez Gene 8942 Human Q16719



[View online »](#)

Background:

Kynureninase is a pyridoxal-5'-phosphate (pyridoxal-P) dependent enzyme that catalyzes the cleavage of L-kynurenine and L-3-hydroxykynurenine into anthranilic and 3-hydroxyanthranilic acids, respectively. Kynureninase is involved in the biosynthesis of NAD cofactors from tryptophan through the kynurenine pathway. Alternative splicing results in multiple transcript variants. [provided by RefSeq, Nov 2010]

Synonyms:

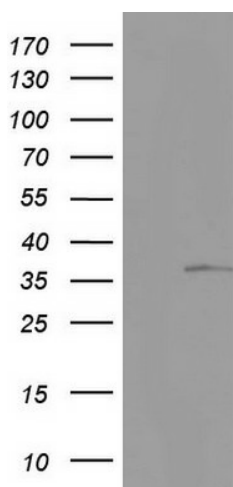
KYNUU

Protein Families:

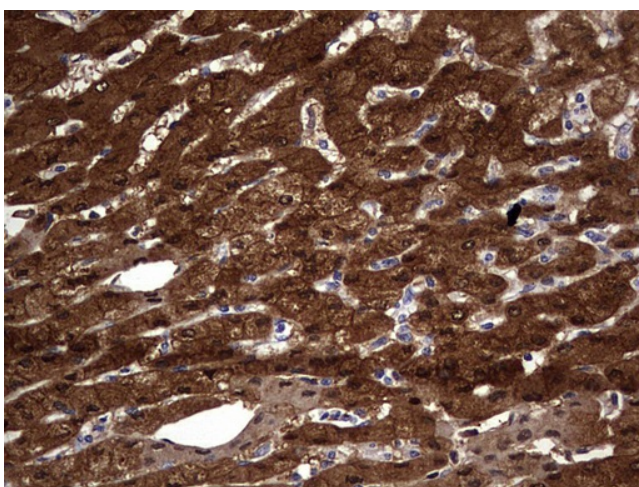
Protease

Protein Pathways:

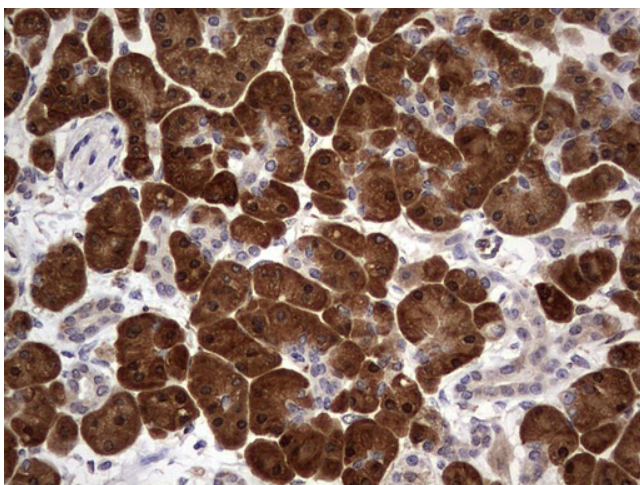
Metabolic pathways, Tryptophan metabolism

Product images:


HEK293T cells were transfected with the pCMV6-ENTRY control (Left lane) or pCMV6-ENTRY KYNU ([RC201559], Right lane) cDNA for 48 hrs and lysed. Equivalent amounts of cell lysates (5 ug per lane) were separated by SDS-PAGE and immunoblotted with anti-KYNU. Positive lysates [LY422334] (100ug) and [LC422334] (20ug) can be purchased separately from OriGene.



Immunohistochemical staining of paraffin-embedded Human liver tissue within the normal limits using anti-KYNU mouse monoclonal antibody. ([TA804120]) Dilution: 1:150



Immunohistochemical staining of paraffin-embedded Human pancreas tissue within the normal limits using anti-KYNU mouse monoclonal antibody. ([TA804120]) Dilution: 1:150