

## Product datasheet for **CF803921**

### GLI1 Mouse Monoclonal Antibody [Clone ID: OTI2C10]

#### Product data:

Product Type:	Primary Antibodies
Clone Name:	OTI2C10
Applications:	WB
Recommended Dilution:	WB 1:2000
Reactivity:	Human, Mouse, Rat
Host:	Mouse
Isotype:	IgG1
Clonality:	Monoclonal
Immunogen:	Human recombinant protein fragment corresponding to amino acids 755-1106 of human GLI1 (NP_005260) produced in E.coli.
Formulation:	Lyophilized powder (original buffer 1X PBS, pH 7.3, 8% trehalose)
Reconstitution Method:	For reconstitution, we recommend adding 100uL distilled water to a final antibody concentration of about 1 mg/mL. To use this carrier-free antibody for conjugation experiment, we strongly recommend performing another round of desalting process. (OriGene recommends Zeba Spin Desalting Columns, 7KMWCO from Thermo Scientific)
Purification:	Purified from mouse ascites fluids or tissue culture supernatant by affinity chromatography (protein A/G)
Conjugation:	Unconjugated
Storage:	Store at -20°C as received.
Stability:	Stable for 12 months from date of receipt.
Predicted Protein Size:	117.7 kDa
Gene Name:	GLI family zinc finger 1
Database Link:	<a href="#">NP_005260</a> <a href="#">Entrez Gene 14632 Mouse</a> <a href="#">Entrez Gene 2735 Human</a> <a href="#">P08151</a>
Synonyms:	GLI

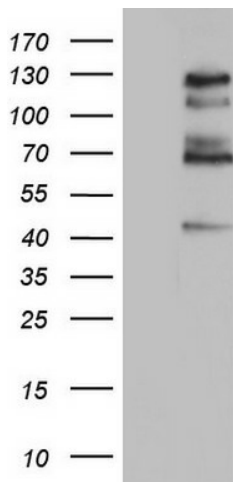


[View online »](#)

**Protein Families:** Adult stem cells, Cancer stem cells, Druggable Genome, Embryonic stem cells, ES Cell Differentiation/IPS, Stem cell relevant signaling - DSL/Notch pathway, Transcription Factors

**Protein Pathways:** Basal cell carcinoma, Hedgehog signaling pathway, Pathways in cancer

**Product images:**



HEK293T cells were transfected with the pCMV6-ENTRY control (Left lane) or pCMV6-ENTRY GLI1 ([RC201110], Right lane) cDNA for 48 hrs and lysed. Equivalent amounts of cell lysates (5 ug per lane) were separated by SDS-PAGE and immunoblotted with anti-GLI1. Positive lysates [LY417412] (100ug) and [LC417412] (20ug) can be purchased separately from OriGene.