

Product datasheet for **CF803895**

TET3 Mouse Monoclonal Antibody [Clone ID: OTI3G10]

Product data:

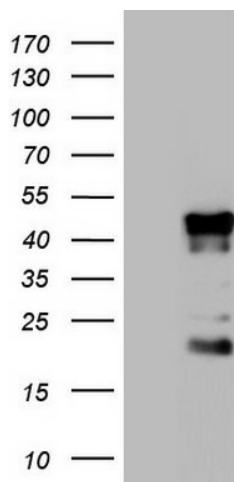
Product Type:	Primary Antibodies
Clone Name:	OTI3G10
Applications:	IHC, WB
Recommended Dilution:	WB 1:500, IHC 1:150
Reactivity:	Human, Mouse, Rat
Host:	Mouse
Isotype:	IgG2a
Clonality:	Monoclonal
Immunogen:	Human recombinant protein fragment corresponding to amino acids 241-568 of human TET3 (NP_659430) produced in E.coli.
Formulation:	Lyophilized powder (original buffer 1X PBS, pH 7.3, 8% trehalose)
Reconstitution Method:	For reconstitution, we recommend adding 100uL distilled water to a final antibody concentration of about 1 mg/mL. To use this carrier-free antibody for conjugation experiment, we strongly recommend performing another round of desalting process. (OriGene recommends Zeba Spin Desalting Columns, 7KMWCO from Thermo Scientific)
Purification:	Purified from mouse ascites fluids or tissue culture supernatant by affinity chromatography (protein A/G)
Conjugation:	Unconjugated
Storage:	Store at -20°C as received.
Stability:	Stable for 12 months from date of receipt.
Gene Name:	tet methylcytosine dioxygenase 3
Database Link:	NP_659430 Entrez Gene 194388 Mouse Entrez Gene 680576 Rat Entrez Gene 200424 Human O43151
Background:	Members of the ten-eleven translocation (TET) gene family, including TET3, play a role in the DNA methylation process (Langemeijer et al., 2009 [PubMed 19923888]). [supplied by OMIM, Nov
Synonyms:	hCG_40738



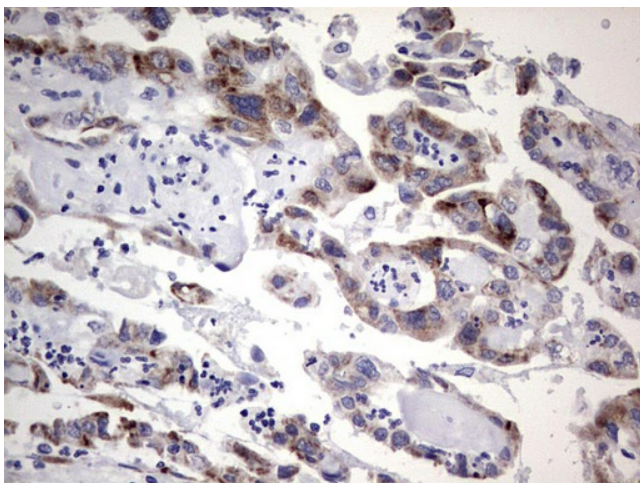
[View online »](#)

Protein Families: Transcription Factors

Product images:



Human recombinant protein fragment corresponding to amino acids 241-568 of human TET3 (NP_659430) produced in E.coli.



Immunohistochemical staining of paraffin-embedded Adenocarcinoma of Human ovary tissue using anti-TET3 mouse monoclonal antibody. (Heat-induced epitope retrieval by 1mM EDTA in 10mM Tris, pH8.5, 120°C for 3min, [TA803895])