

## Product datasheet for **CF803841**

### ACE2 Mouse Monoclonal Antibody [Clone ID: OTI4D2] (Angiotensin Converting Enzyme 2)

#### Product data:

Product Type:	Primary Antibodies
Clone Name:	OTI4D2
Applications:	IHC, WB
Recommended Dilution:	WB 1:200, IHC 1:150
Reactivity:	Human, Mouse, Rat
Host:	Mouse
Isotype:	IgG2a
Clonality:	Monoclonal
Immunogen:	Human recombinant protein fragment corresponding to amino acids 18-237 of human ACE2 (NP_068576) produced in E.coli.
Formulation:	Lyophilized powder (original buffer 1X PBS, pH 7.3, 8% trehalose)
Reconstitution Method:	For reconstitution, we recommend adding 100uL distilled water to a final antibody concentration of about 1 mg/mL. To use this carrier-free antibody for conjugation experiment, we strongly recommend performing another round of desalting process. (OriGene recommends Zeba Spin Desalting Columns, 7KMWCO from Thermo Scientific)
Purification:	Purified from mouse ascites fluids or tissue culture supernatant by affinity chromatography (protein A/G)
Conjugation:	Unconjugated
Storage:	Store at -20°C as received.
Stability:	Stable for 12 months from date of receipt.
Gene Name:	angiotensin converting enzyme 2
Database Link:	<a href="#">NP_068576</a> <a href="#">Entrez Gene 59272 Human</a> <a href="#">Q9BYF1</a>

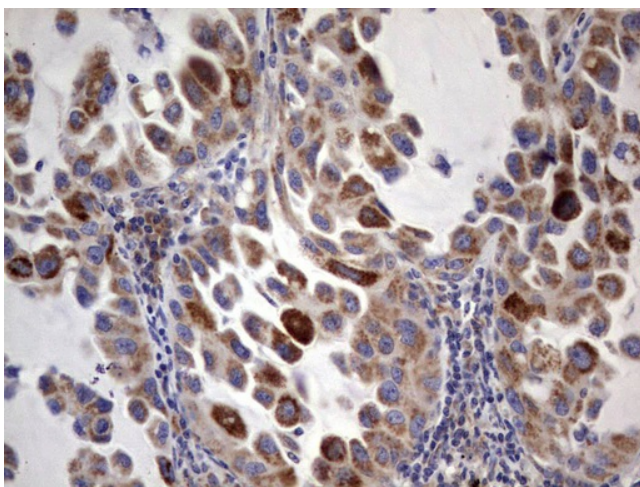


[View online »](#)

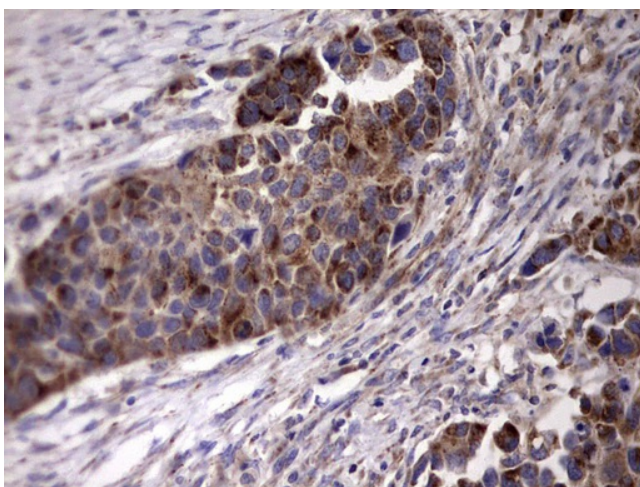
**Background:** The protein encoded by this gene belongs to the angiotensin-converting enzyme family of dipeptidyl carboxydipeptidases and has considerable homology to human angiotensin 1 converting enzyme. This secreted protein catalyzes the cleavage of angiotensin I into angiotensin 1-9, and angiotensin II into the vasodilator angiotensin 1-7. The organ- and cell-specific expression of this gene suggests that it may play a role in the regulation of cardiovascular and renal function, as well as fertility. In addition, the encoded protein is a functional receptor for the spike glycoprotein of the human coronaviruses SARS and HCoV-NL63. [provided by RefSeq, Jul 2008]

**Synonyms:** ACEH  
**Protein Families:** Druggable Genome, Secreted Protein, Transmembrane  
**Protein Pathways:** Renin-angiotensin system

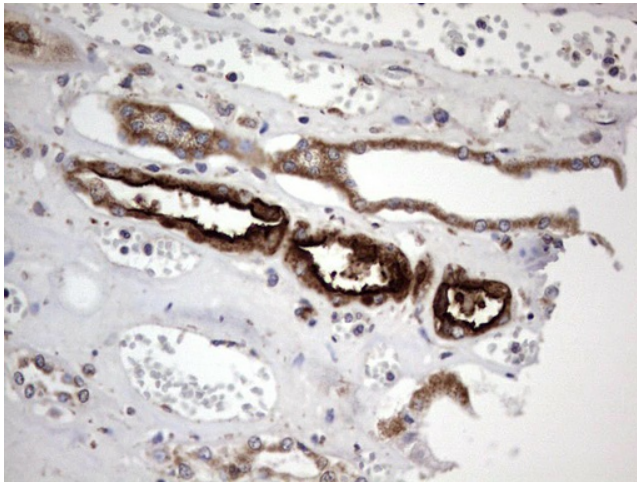
### Product images:



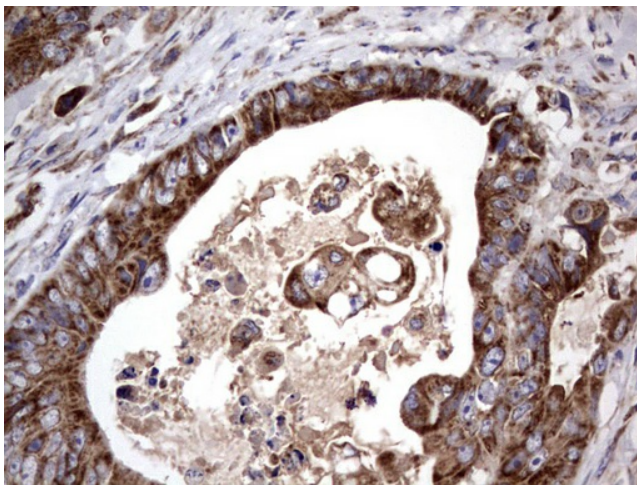
Immunohistochemical staining of paraffin-embedded Carcinoma of Human lung tissue using anti-ACE2 mouse monoclonal antibody. Heat-induced epitope retrieval by EDTA solution buffer pH 8.0 at 120°C for 3 min.



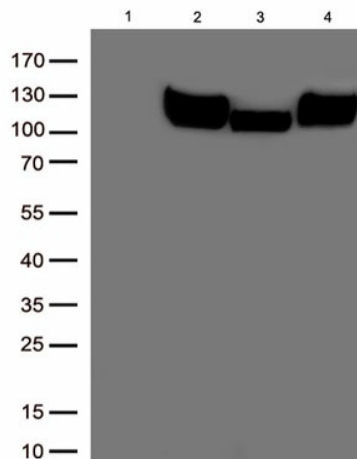
Immunohistochemical staining of paraffin-embedded Carcinoma of Human kidney tissue using anti-ACE2 mouse monoclonal antibody. Heat-induced epitope retrieval by EDTA solution buffer pH 8.0 at 120°C for 3 min.



Immunohistochemical staining of paraffin-embedded Human Kidney tissue within the normal limits using anti-ACE2 mouse monoclonal antibody. Heat-induced epitope retrieval by EDTA solution buffer pH 8.0 at 120°C for 3 min.



Immunohistochemical staining of paraffin-embedded Adenocarcinoma of Human colon tissue using anti-ACE2 mouse monoclonal antibody. Heat-induced epitope retrieval by EDTA solution buffer pH 8.0 at 120°C for 3 min.



Western blot analysis of overexpressed lysates(15ug per lane) from HEK293T cells transfected with empty plasmid ([PS100001], lane 1) , human ACE2 plasmid ([RC228442], lane 2), mouse ACE2 plasmid ([MR210755], lane 3), rat ACE2 plasmid ([RR214151], lane 4), using anti-NNMT antibody [TA803841] (1:500).