

## Product datasheet for **CF803816**

### ITGB1BP1 Mouse Monoclonal Antibody [Clone ID: OTI3C11]

#### Product data:

Product Type:	Primary Antibodies
Clone Name:	OTI3C11
Applications:	WB
Recommended Dilution:	WB 1:2000
Reactivity:	Human, Mouse, Rat
Host:	Mouse
Isotype:	IgG2b
Clonality:	Monoclonal
Immunogen:	Full length human recombinant protein of human ITGB1BP1 (NP_004754) produced in E.coli.
Formulation:	Lyophilized powder (original buffer 1X PBS, pH 7.3, 8% trehalose)
Reconstitution Method:	For reconstitution, we recommend adding 100uL distilled water to a final antibody concentration of about 1 mg/mL. To use this carrier-free antibody for conjugation experiment, we strongly recommend performing another round of desalting process. (OriGene recommends Zeba Spin Desalting Columns, 7KMWCO from Thermo Scientific)
Purification:	Purified from mouse ascites fluids or tissue culture supernatant by affinity chromatography (protein A/G)
Conjugation:	Unconjugated
Storage:	Store at -20°C as received.
Stability:	Stable for 12 months from date of receipt.
Gene Name:	integrin subunit beta 1 binding protein 1
Database Link:	<a href="#">NP_004754</a> <a href="#">Entrez Gene 9270 Human</a> <a href="#">O14713</a>



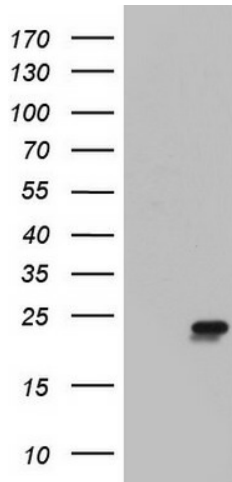
[View online »](#)

**Background:**

The cytoplasmic domains of integrins are essential for cell adhesion. The protein encoded by this gene binds to the beta1 integrin cytoplasmic domain. The interaction between this protein and beta1 integrin is highly specific. Two isoforms of this protein are derived from alternatively spliced transcripts. The shorter form of this protein does not interact with the beta1 integrin cytoplasmic domain. The longer form is a phosphoprotein and the extent of its phosphorylation is regulated by the cell-matrix interaction, suggesting an important role of this protein during integrin-dependent cell adhesion. [provided by RefSeq, Jul 2008]

**Synonyms:**

ICAP-1A; ICAP-1alpha; ICAP-1B; ICAP1; ICAP1A; ICAP1B

**Product images:**

HEK293T cells were transfected with the pCMV6-ENTRY control (Left lane) or pCMV6-ENTRY ITGB1BP1 ([RC201963], Right lane) cDNA for 48 hrs and lysed. Equivalent amounts of cell lysates (5 ug per lane) were separated by SDS-PAGE and immunoblotted with anti-ITGB1BP1. Positive lysates [LY417776] (100ug) and [LC417776] (20ug) can be purchased separately from OriGene.